

LEA Name : Phoenixville Area SD
Address : 386 City Line Ave
Phoenixville , PA 19460

County : Chester
AUN Number : 124157203
LEA Type : SD

Annual Financial Report Accuracy Certification Statement

For Fiscal Year Ending

6/30/2023

Pennsylvania Department of Education

&

Office of Comptroller Operations

PDE-2056: Intermediate Unit

PDE-2057: School District, AVTS/CTC, Charter School,
and Special Program Jointure

CERTIFICATION: By signing this page I agree that the electronic data submitted is a complete and accurate statement of the financial operations and status of the local education agency for the fiscal year. It has been prepared in accordance with generally accepted accounting principles and established Commonwealth of PA reporting guidelines.


Chief School Administrator Signature

Date

12/1/23


Board Secretary Signature

Date

12/1/2023

Jeremy Melber

Contact Person

melberj@pasd.org

Contact Person E-mail Address

(484)927-5020

Ext :

Contact Person Telephone Number

Contact Person Fax Number

Audit Certification
Annual Financial Report:
For Fiscal Year Ending **6/30/2023**
(Pursuant to PA School Code Section 218(b))

LEA Name : Phoenixville Area SD
AUN Number : 124157203
County : Chester

Audit Certification Due: 12/31/2023

This certification is applicable to the Annual Financial Report data submitted through the Consolidated Financial Reporting System (CFRS).

CERTIFICATION: By signing this page I agree that the financial statements of the school have been properly audited as noted above pursuant to Article XXIV, and in the auditor's professional opinion, the Annual Financial Report (PDE-2057) submitted through CFRS is materially consistent with the audited financial statements.

Chief School Administrator

Board Secretary

Signature

Date

Signature

Date

Jeremy Melber

Contact Person

melberj@pasd.org

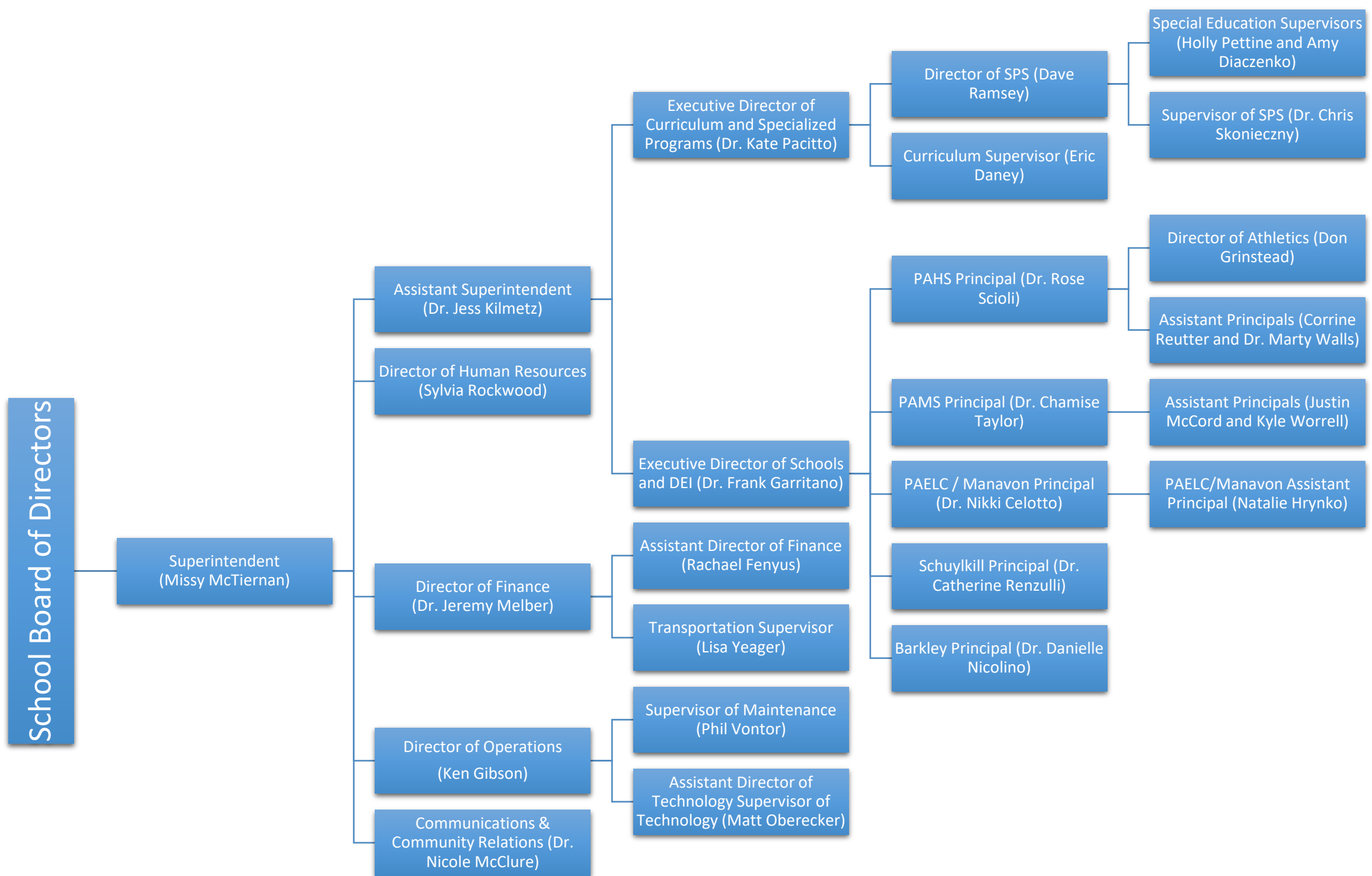
Contact Person E-mail Address

(484)927-5020

Ext :

Contact Person Telephone Number

Contact Person Fax Number





Book	Policy Manual
Section	600 Finances
Title	Fixed Asset Policy AR
Code	622 AR
Status	Active
Last Revised	April 21, 2015

ADMINISTRATIVE GUIDELINES

POLICY NO. 622

FIXED ASSET POLICY

Capital Assets

Definition –

In accordance with Governmental Accounting Standards Board Statement number 34, **capital assets** include land, improvements to land, easements, buildings, building improvements, vehicles, machinery, equipment, works of art, historical treasures and infrastructure. Capital assets are both tangible and intangible assets used in operations and have initial useful lives extending beyond a single reporting period. Equipment will not change its original shape, appearance or character with use and it can be expected to last more than one year with reasonable care and maintenance.

Purchased Capital Assets

Purchased capital assets greater than or equal to \$5,000 should be recorded at their historical/original cost. The cost of capital assets should include capitalized interest and ancillary charges necessary to place the asset into service. Ancillary charges include freight, site preparation and professional fees. Purchases less than \$5,000 are treated as supplies and are coded to the supply objects prescribed by the Pennsylvania Public School Accounting Manual.

Capital assets should be depreciated over their useful lives as determined for each asset class. Inexhaustible capital assets such as land and land improvements should not be depreciated.

If determining historical cost is not practical due to inadequate records, reporting should be based on estimates of original cost at the date of construction or purchase.

Fixed asset records must include the acquisition date, cost, useful life, depreciation method and salvage value for capital asset classifications and groups.

Individual items costing less than \$5,000, but purchased in quantity such that the aggregate total cost meets or exceeds \$5,000 shall be capitalized and depreciated as a unit over the useful life for that asset class.

Due to changes in technology, computer software is considered a supply and is expensed at the time of purchase. Components such as monitors, keyboards shall be capitalized as a unit upon purchase when the individual components are less than the capitalization thresh-hold but in the aggregate meet or exceed the thresh-hold for technology equipment of \$2,000.

Cafeteria, kitchen appliances and food service equipment shall be capitalized when individual items equal or exceed a thresh-hold of \$2,000 and shall be capitalized as a unit upon purchase when the individual components are less than the capitalization thresh-hold but in the aggregate meet or exceed the thresh-hold of \$2,000.

Donated Capital Assets: Donated Capital Assets

Donated capital assets must be reported at fair market value plus ancillary charges if any at the time of donation. Donated assets are recorded as contributed capital and depreciated over their useful lives as determined for each asset class.

If determining historical costs is not practical due to inadequate records, reporting should be based on estimates of fair market value at the date of donation.

Collections

Works of art, historical treasures and similar assets should be capitalized at their historical cost or fair value at date of donation (estimated if necessary) whether they are held as individual items or in a collection.

Capitalized collections or individual items that are exhaustible should be depreciated over their useful lives. Depreciation is not required for collections or individual items that are inexhaustible.

Infrastructure

Definition –

Infrastructure assets are long-lived capital assets that normally are stationary in nature and can normally be preserved for a significantly greater number of years than most capital assets. Infrastructure includes site improvements such as parking lots and sidewalks, as well as fiber-optic systems for computer networks or consulting on acquisitions.

Infrastructure assets should be depreciated over the useful lives. Routine repairs and maintenance costs are charged to operations as incurred. Expenditures that extend the useful life of the infrastructure are capitalized as an asset and depreciated over the newly established useful life.

Useful Lives - Fixed assets are to be depreciated over the following useful lives:

ASSET CLASS YEARS

School Buildings 40

Electrical/Plumbing 20
HVAC Systems 20
Interior Construction 20
Outdoor Equipment 20
Portable Classrooms 20
Roofing 20
Site Improvements 20
Sprinkler/Fire System 20
Stage & Auditorium 20
Contractors Equipment 10
Furniture & Accessories 10
Kitchen Equipment 10
Machinery & Tools 10
Musical Instruments 10
Licensed Vehicles 8
Athletic Equipment 7
Audio Visual Equipment 7
Grounds Equipment 7
Business Machines 5
Carpeting, New/ Replacement 5

Communication Equipment 5
Custodial Equipment 5
Library Books 5

Science & Engineering 5
Uniforms 5
Computer Hardware and IT Assigned Software
Depreciation Expense

Depreciation expense should be reported in the statement of activities. Depreciation expense that can be specifically identified with a function should be included as a direct expense. Depreciation expense for shared facilities should be ratably included in direct expenses for each function.

Depreciation is allocated to expense in a systematic and rational manner. The straight- line, half-year convention, method of depreciation is used.

Depreciation may be calculated for a class of assets, a network of assets or individual assets.

Assets Acquired By Capital Lease

Assets acquired by capital lease are recorded at the net present value of the future minimum lease payments. A corresponding liability is established at this time. Assets acquired under the terms of capital leases are depreciated over the useful lives designated for the asset class.

Val Number	Description	Justification
10150	<p>NAG: Balance Sheet Govt Funds:Data has been entered for Fund 32, Line 0400 - Due to Other Funds. Since transfers out of Fund 32 are not allowed, this line should only be utilized when recording transactions related to interfund reimbursements. Please make corrections or provide brief details of the interfund reimbursement.</p> <p>NAG Fund 32, Line 0400: \$418,691.00</p>	Transfer to reimburse General Fund for expenses
16230	<p>REP Fund 51 – Net Position - Beginning of Fiscal Year must equal Prior Year AFR, Net Position - End of Year. Justifications to this error must fully explain the situation that prompted a fund balance restatement. "Auditor Adjustment" is not a sufficient justification.</p> <p>REP Fund 51 – Net Position - Beginning of Fiscal Year: \$1,039,137.00 REP Fund 51, Prior Year AFR, Net Position - End of Year: \$1,025,790.00</p>	21/22 AFR will need to be reopened and adjusted to correct prior year ending Fund 51 fund balance.
30214	<p>New bond proceeds have been reported in governmental funds. An interfund transfer into Capital Reserve Fund 32 has also been reported. Note that bond proceeds are an unallowable source of funding in fund 32 per municipal code restrictions. Transfers of bond proceeds of any type into fund 32 are prohibited. Please confirm that no bond proceeds have been transferred into Fund 32, or correct the AFR data.</p> <p>Governmental Fund Revenue, Account 9110: \$35,000,000.00 Fund 32 Revenue, Account 9310: \$1,300,000.00</p>	Confirmed no bond proceeds were transferred into Fund 32.
50160	SOIN: All Governmental Fund General Obligation Bonds must include an amount for Interest Paid during Fiscal Year. Correct data or enter a justification.	No interest was paid on GON Series of 2023 during 2022-2023.
50180	SOIN: All Governmental Fund General Obligation Bonds must include an amount for Amount Due Within One Year (Principal and Interest). Correct data or enter a justification.	GOB Series of AA of 2017 was paid off in 2022-2023, no amount is due in the subsequent year.
50278	<p>SOIN: Current Year AFR amount must equal Prior Year AFR amount. Note: If the variance is due to a Subscription-Based IT Arrangement (SBITA) existing prior to GASB 96 implementation that is now being included on the SOIN as Leases & Other Right-to-Use Arrangements "Amount at FY Start", please note this within the justification.</p> <p>SOIN, Beg Bal, Govt Funds Leases & Other Right to Use Arrangements: \$255,205.17 PY Ending Bal, Govt Funds Leases & Other Right to Use Arrangements: \$0.00</p>	Beginning balance is due to GASB 96 implementation.

50430	SESS - 2160 Social Work Services: SESS Schedule amounts for Special Education vary from prior year by 40% or more. Correct the data or enter a justification. SESS Schedule 2160: \$10,634.89 Prior Year SESS Schedule 2160: \$21,345.19	Increase in services/needs
50450	SESS - 2350 Legal and Accounting Services: SESS Schedule amounts for Special Education vary from prior year by 40% or more. Correct the data or enter a justification. SESS Schedule 2350: \$38,350.35 Prior Year SESS Schedule 2350: \$11,424.81	Increase in services/needs
50460	SESS - 2420 Medical Services: SESS Schedule amounts for Special Education vary from prior year by 40% or more. Correct the data or enter a justification. SESS Schedule 2420: \$461,279.82 Prior Year SESS Schedule 2420: \$235,508.51	Increase in services/needs

LEA : 124157203 Phoenixville Area SD

Printed 12/4/2023 9:36:44 AM

Amounts Expressed in Whole Dollars		<u>General Fund</u> <u>(10)</u>	<u>Student Sponsored</u> <u>Activity Fund</u> <u>(21)</u>	<u>Public Purpose Trust</u> <u>(27)</u>	<u>Other Compt Approved</u> <u>(28)</u>	<u>Athletic / Activity</u> <u>(29)</u>
Assets And Deferred Outflows Of Resources						
Assets						
0100	Cash and Cash Equivalents	1,104,605				
0110	Investments	42,625,289				
0120	Taxes Receivable	7,266,198				
0130	Due From Other Funds	880,183				
0141	Due From Other Governments					
0142	State Revenue Receivable	2,417,538				
0143	Federal Revenue Receivable	1,477,423				
0145	Other Intergovernmental Revenue Receivable					
0146	Due from Primary Government					
0147	Due from Component Unit					
0150	Other Receivables	(56,605)				
0170	Inventories					
0180	Prepaid Expenses (Expenditures)	21,468				
0190	Other Current Assets					
Total Assets		\$55,736,099				
0910	Deferred Outflows of Resources					
Total Assets And Deferred Outflows Of Resources		\$55,736,099				

Amounts Expressed in Whole Dollars		<u>Capital Reserve (690.</u> <u>1850)</u> <u>(31)</u>	<u>Capital Reserve (1431)</u> <u>(32)</u>	<u>Other Capital Projects</u> <u>Fund</u> <u>(39)</u>	<u>Debt Service</u> <u>(40)</u>	<u>Permanent</u> <u>(90)</u>
Assets And Deferred Outflows Of Resources						
Assets						
0100	Cash and Cash Equivalents		2,640,345	34,135,846		
0110	Investments					
0120	Taxes Receivable					
0130	Due From Other Funds					
0141	Due From Other Governments					
0142	State Revenue Receivable					
0143	Federal Revenue Receivable					
0145	Other Intergovernmental Revenue Receivable					
0146	Due from Primary Government					
0147	Due from Component Unit					
0150	Other Receivables					
0170	Inventories					
0180	Prepaid Expenses (Expenditures)					
0190	Other Current Assets					
Total Assets			\$2,640,345	\$34,135,846		
0910	Deferred Outflows of Resources					
Total Assets And Deferred Outflows Of Resources			\$2,640,345	\$34,135,846		

LEA : 124157203 Phoenixville Area SD

Printed 12/4/2023 9:36:44 AM

Amounts Expressed in Whole Dollars		<u>Total Governmental</u>
		<u>Funds</u>
Assets And Deferred Outflows Of Resources		
Assets		
0100 Cash and Cash Equivalents	37,880,796	
0110 Investments	42,625,289	
0120 Taxes Receivable	7,266,198	
0130 Due From Other Funds	880,183	
0141 Due From Other Governments		
0142 State Revenue Receivable	2,417,538	
0143 Federal Revenue Receivable	1,477,423	
0145 Other Intergovernmental Revenue Receivable		
0146 Due from Primary Government		
0147 Due from Component Unit		
0150 Other Receivables	(56,605)	
0170 Inventories		
0180 Prepaid Expenses (Expenditures)	21,468	
0190 Other Current Assets		
Total Assets	\$92,512,290	
0910 Deferred Outflows of Resources		
Total Assets And Deferred Outflows Of Resources	\$92,512,290	

LEA : 124157203 Phoenixville Area SD

Printed 12/4/2023 9:36:44 AM

Amounts Expressed in Whole Dollars	<u>General Fund</u> <u>(10)</u>	<u>Student Sponsored</u> <u>Activity Fund</u> <u>(21)</u>	<u>Public Purpose Trust</u> <u>(27)</u>	<u>Other Compt Approved</u> <u>(28)</u>	<u>Athletic / Activity</u> <u>(29)</u>
Liabilities And Deferred Inflows Of Resources And Fund Balances					
Liabilities					
0400 Due to Other Funds					
0411 Due to Other Governments					
0412 Due to Primary Government					
0413 Due to Component Unit					
0420 Accounts Payable	2,714,196				
0430 Contracts Payable					
0440 Current Portion of Long-Term Debt					
0450 Short-Term Payables					
0461 Accrued Salaries and Benefits	11,343,632				
0462 Payroll Deductions and Withholding					
0480 Unearned Revenues	293,425				
0490 Other Current Liabilities					
Total Liabilities	\$14,351,253				
0950 Deferred Inflows of Resources	6,453,378				
Fund Balances					
0810 Nonspendable Fund Balance	21,468				
0820 Restricted Fund Balance					
0830 Committed Fund Balance					
0840 Assigned Fund Balance					
0850 Unassigned Fund Balance	34,910,000				
Total Fund Balances	\$34,931,468				
Total Liabilities, Deferred Inflows Of Resources And Fund Balances	\$55,736,099				

LEA : 124157203 Phoenixville Area SD

Printed 12/4/2023 9:36:44 AM

Amounts Expressed in Whole Dollars		<u>Capital Reserve (690.</u> <u>1850)</u> <u>(31)</u>	<u>Capital Reserve (1431)</u> <u>(32)</u>	<u>Other Capital Projects</u> <u>Fund</u> <u>(39)</u>	<u>Debt Service</u> <u>(40)</u>	<u>Permanent</u> <u>(90)</u>
Liabilities And Deferred Inflows Of Resources And Fund Balances						
Liabilities						
0400	Due to Other Funds		418,691	461,492		
0411	Due to Other Governments					
0412	Due to Primary Government					
0413	Due to Component Unit					
0420	Accounts Payable			452,511		
0430	Contracts Payable					
0440	Current Portion of Long-Term Debt					
0450	Short-Term Payables					
0461	Accrued Salaries and Benefits					
0462	Payroll Deductions and Withholding					
0480	Unearned Revenues					
0490	Other Current Liabilities					
Total Liabilities			\$418,691	\$914,003		
0950	Deferred Inflows of Resources					
Fund Balances						
0810	Nonspendable Fund Balance					
0820	Restricted Fund Balance		2,221,654	33,221,843		
0830	Committed Fund Balance					
0840	Assigned Fund Balance					
0850	Unassigned Fund Balance					
Total Fund Balances			\$2,221,654	\$33,221,843		
Total Liabilities, Deferred Inflows Of Resources And Fund Balances			\$2,640,345	\$34,135,846		

LEA : 124157203 Phoenixville Area SD

Printed 12/4/2023 9:36:44 AM

Amounts Expressed in Whole Dollars		<u>Total Governmental</u> <u>Funds</u>
Liabilities And Deferred Inflows Of Resources And Fund Balances		
Liabilities		
0400 Due to Other Funds		880,183
0411 Due to Other Governments		
0412 Due to Primary Government		
0413 Due to Component Unit		
0420 Accounts Payable		3,166,707
0430 Contracts Payable		
0440 Current Portion of Long-Term Debt		
0450 Short-Term Payables		
0461 Accrued Salaries and Benefits		11,343,632
0462 Payroll Deductions and Withholding		
0480 Unearned Revenues		293,425
0490 Other Current Liabilities		
Total Liabilities		\$15,683,947
0950 Deferred Inflows of Resources		6,453,378
Fund Balances		
0810 Nonspendable Fund Balance		21,468
0820 Restricted Fund Balance		35,443,497
0830 Committed Fund Balance		
0840 Assigned Fund Balance		
0850 Unassigned Fund Balance		34,910,000
Total Fund Balances		\$70,374,965
Total Liabilities, Deferred Inflows Of Resources And Fund Balances		\$92,512,290

Amounts Expressed in Whole Dollars		<u>General Fund</u> <u>(10)</u>	<u>Student Sponsored</u> <u>Activity Fund</u> <u>(21)</u>	<u>Public Purpose Trust</u> <u>(27)</u>	<u>Other Compt Approved</u> <u>(28)</u>	<u>Athletic / Activity</u> <u>(29)</u>
Revenues						
6000	Revenue from Local Sources	89,676,547				
7000	Revenue from State Sources	20,273,268				
8000	Revenue from Federal Sources	3,124,114				
Total Revenues		\$113,073,929				
Expenditures						
1000	Instruction	56,615,178				
2000	Support Services	32,017,454				
3000	Operation of Non-Instructional Services	2,880,256				
4000	Facilities Acquisition, Construction and Improvement Services	881,933				
5110	Debt Service	10,513,157				
5130	Refund of Prior Year Revenues / Receipts	5,489				
5140	Leases and Other Right-to-Use Arrangements	267,437				
Total Expenditures		\$103,180,904				
Excess (Deficiency) Of Revenues Over Expenditures		\$9,893,025				
Other Financing Sources (Uses)						
9110	Face Value of Bonds Issued					
9120	Proceeds from Refunding of Bonds					
9130	Bond Premiums					
9200	Proceeds from Extended Term Financing, Leases, and Other Right-to-Use Arrangements	38,984				
9300	Interfund Transfers - IN					
9400	Sale of or Compensation for Loss of Fixed Assets					
9710	Transfers from Component Units					
9720	Transfers from Primary Governments					
9910	Other Financing Sources Not Listed in the 9000 Series					
9990	Insurance Recoveries					
5120	Debt Service – Refunded Bonds					
5150	Bond Discounts					
5200	Interfund Transfers – Out	1,300,000				
5300	Transfers Out to Component Units/Primary Governments					
Total Other Financing Sources (Uses)		(\$1,261,016)				

Amounts Expressed in Whole Dollars		<u>Capital Reserve (690.1850)</u> <u>(31)</u>	<u>Capital Reserve (1431)</u> <u>(32)</u>	<u>Other Capital Projects</u> <u>Fund</u> <u>(39)</u>	<u>Debt Service</u> <u>(40)</u>	<u>Permanent</u> <u>(90)</u>
Revenues						
6000	Revenue from Local Sources		41,973	126,833		
7000	Revenue from State Sources					
8000	Revenue from Federal Sources					
Total Revenues			\$41,973	\$126,833		
Expenditures						
1000	Instruction					
2000	Support Services			932,982		
3000	Operation of Non-Instructional Services					
4000	Facilities Acquisition, Construction and Improvement Services		618,906	1,869,584		
5110	Debt Service					
5130	Refund of Prior Year Revenues / Receipts					
5140	Leases and Other Right-to-Use Arrangements					
Total Expenditures			\$618,906	\$2,802,566		
Excess (Deficiency) Of Revenues Over Expenditures			(\$576,933)	(\$2,675,733)		
Other Financing Sources (Uses)						
9110	Face Value of Bonds Issued			35,000,000		
9120	Proceeds from Refunding of Bonds					
9130	Bond Premiums					
9200	Proceeds from Extended Term Financing, Leases, and Other Right-to-Use Arrangements			857,482		
9300	Interfund Transfers - IN		1,300,000			
9400	Sale of or Compensation for Loss of Fixed Assets			224,665		
9710	Transfers from Component Units					
9720	Transfers from Primary Governments					
9910	Other Financing Sources Not Listed in the 9000 Series					
9990	Insurance Recoveries					
5120	Debt Service – Refunded Bonds					
5150	Bond Discounts					
5200	Interfund Transfers – Out					
5300	Transfers Out to Component Units/Primary Governments					
Total Other Financing Sources (Uses)			\$1,300,000	\$36,082,147		

Amounts Expressed in Whole Dollars		<u>Total Governmental Funds</u>
Revenues		
6000	Revenue from Local Sources	89,845,353
7000	Revenue from State Sources	20,273,268
8000	Revenue from Federal Sources	3,124,114
Total Revenues		\$113,242,735
Expenditures		
1000	Instruction	56,615,178
2000	Support Services	32,950,436
3000	Operation of Non-Instructional Services	2,880,256
4000	Facilities Acquisition, Construction and Improvement Services	3,370,423
5110	Debt Service	10,513,157
5130	Refund of Prior Year Revenues / Receipts	5,489
5140	Leases and Other Right-to-Use Arrangements	267,437
Total Expenditures		\$106,602,376
Excess (Deficiency) Of Revenues Over Expenditures		\$6,640,359
Other Financing Sources (Uses)		
9110	Face Value of Bonds Issued	35,000,000
9120	Proceeds from Refunding of Bonds	
9130	Bond Premiums	
9200	Proceeds from Extended Term Financing, Leases, and Other Right-to-Use Arrangements	896,466
9300	Interfund Transfers - IN	1,300,000
9400	Sale of or Compensation for Loss of Fixed Assets	224,665
9710	Transfers from Component Units	
9720	Transfers from Primary Governments	
9910	Other Financing Sources Not Listed in the 9000 Series	
9990	Insurance Recoveries	
5120	Debt Service – Refunded Bonds	
5150	Bond Discounts	
5200	Interfund Transfers – Out	1,300,000
5300	Transfers Out to Component Units/Primary Governments	
Total Other Financing Sources (Uses)		\$36,121,131

Amounts Expressed in Whole Dollars		<u>General Fund</u> <u>(10)</u>	<u>Student Sponsored</u> <u>Activity Fund</u> <u>(21)</u>	<u>Public Purpose Trust</u> <u>(27)</u>	<u>Other Compt Approved</u> <u>(28)</u>	<u>Athletic / Activity</u> <u>(29)</u>
Special And Extraordinary Items						
9920	Special Items – Gains					
9930	Extraordinary Items – Gains					
5520	Special Items – Losses					
5530	Extraordinary Items – Losses					
Net Change In Fund Balances		\$8,632,009				
Fund Balance						
0001	Fund Balance - Beginning of Fiscal Year	26,299,458				
Fund Balance - End Of Year		\$34,931,467				

Amounts Expressed in Whole Dollars		<u>Capital Reserve (690.</u> <u>1850)</u> <u>(31)</u>	<u>Capital Reserve (1431)</u> <u>(32)</u>	<u>Other Capital Projects</u> <u>Fund</u> <u>(39)</u>	<u>Debt Service</u> <u>(40)</u>	<u>Permanent</u> <u>(90)</u>
Special And Extraordinary Items						
9920	Special Items – Gains					
9930	Extraordinary Items – Gains					
5520	Special Items – Losses					
5530	Extraordinary Items – Losses					
Net Change In Fund Balances			\$723,067	\$33,406,414		
Fund Balance						
0001	Fund Balance - Beginning of Fiscal Year		1,498,588	(184,571)		
Fund Balance - End Of Year			\$2,221,655	\$33,221,843		

Amounts Expressed in Whole Dollars		<u>Total Governmental</u> <u>Funds</u>
Special And Extraordinary Items		
9920	Special Items – Gains	
9930	Extraordinary Items – Gains	
5520	Special Items – Losses	
5530	Extraordinary Items – Losses	
Net Change In Fund Balances		\$42,761,490
Fund Balance		
0001	Fund Balance - Beginning of Fiscal Year	27,613,475
Fund Balance - End Of Year		\$70,374,965

Amounts Expressed in Whole Dollars		<u>Food Service</u> <u>(51)</u>	<u>Child Care</u> <u>Operations</u> <u>(52)</u>	<u>Other Enterprise</u> <u>(58)</u>	<u>TOTAL</u>	<u>Internal Service</u> <u>(60)</u>
Assets And Deferred Outflows Of Resources						
Current Assets						
0100	Cash and Cash Equivalents	1,527,633			1,527,633	
0110	Investments					
0130	Due From Other Funds					
0141	Due From Other Governments					
0142	State Revenue Receivable					
0143	Federal Revenue Receivable					
0146	Due from Primary Government					
0147	Due from Component Unit					
0150	Other Receivables					
0170	Inventories	10,479			10,479	
0180	Prepaid Expenses (Expenditures)					
0190	Other Current Assets					
Total Current Assets		\$1,538,112			\$1,538,112	
Noncurrent Assets						
0211	Land					
0212	Site Improvements (Net)					
0220	Buildings and Building Improvements (Net)	148,322			148,322	
0230	Tangible Property and Intangible Right-To-Use Assets (Net)					
0250	Construction in Progress					
0260	Long Term Prepayments					
0290	Other Noncurrent Assets					
Total Noncurrent Assets		\$148,322			\$148,322	
0910	Deferred Outflows of Resources					
Total Assets And Deferred Outflows Of Resources		\$1,686,434			\$1,686,434	

Amounts Expressed in Whole Dollars	<u>Food Service</u> <u>(51)</u>	<u>Child Care</u> <u>Operations</u> <u>(52)</u>	<u>Other Enterprise</u> <u>(58)</u>	<u>TOTAL</u>	<u>Internal Service</u> <u>(60)</u>
Liabilities And Deferred Inflows Of Resources And Net Position					
Current Liabilities					
0400 Due to Other Funds					
0411 Due to Other Governments					
0413 Due to Component Unit					
0420 Accounts Payable	261,491			261,491	
0430 Contracts Payable					
0440 Current Portion of Long-Term Debt					
0450 Short-Term Payables					
0461 Accrued Salaries and Benefits					
0462 Payroll Deductions and Withholding					
0480 Unearned Revenues	135,136			135,136	
0490 Other Current Liabilities					
Total Current Liabilities	\$396,627			\$396,627	
Noncurrent Liabilities					
0510 Bonds Payable					
0520 Extended-Term Financing Agreements Payable					
0530 Lease and Other Right-To-Use Obligations					
0540 Accumulated Compensated Absences					
0550 Authority Lease Obligations					
0560 Other Post-Employment Benefits (OPEB)					
0570 Net Pension Liability					
0599 Other Noncurrent Liabilities					
Total Noncurrent Liabilities					
Total Liabilities	\$396,627			\$396,627	
0950 Deferred Inflows of Resources					
Net Position					
0791 Net Investment in Capital Assets	148,322			148,322	
0008 Restricted Net Position (0792 – 0798)					
0799 Unrestricted Net Position	1,141,485			1,141,485	
Total Net Position	\$1,289,807			\$1,289,807	
Total Liabilities And Deferred Inflows Of Resources And Net Position	\$1,686,434			\$1,686,434	

Amounts Expressed in Whole Dollars	Food Service (51)	Child Care Operations (52)	Other Enterprise (58)	TOTAL	Internal Service (60)
Operating Revenues					
6600 Food Service Revenue	606,453			606,453	
0071 Charges for Services					
0072 Other Operating Revenue					
Total Operating Revenues	\$606,453			\$606,453	
Operating Expenses					
100 Personnel Services – Salaries	40,030			40,030	
200 Personnel Services – Employee Benefits					
300 Purchased Professional and Technical Services	633			633	
400 Purchased Property Services					
500 Other Purchased Services	1,500,344			1,500,344	
600 Supplies	125,753			125,753	
740 Depreciation	40,802			40,802	
770 Amortization Expense					
810 Dues and Fees	23,388			23,388	
880 Refunds of Prior Years' Receipts					
890 Miscellaneous Expenditures					
Total Operating Expenses	\$1,730,950			\$1,730,950	
Operating Income (Loss)	(\$1,124,497)			(\$1,124,497)	
Non Operating Revenues (Expenses)					
6500 Earnings on Investments	30,688			30,688	
6830 Federal Revenue from Intermediary Sources					
6920 Contributions and Donations from Private Sources					
6930 Gains or Losses on Sale of Fixed Assets					
6991 Refunds of a Prior Year Expenditure					
7000 Revenue from State Sources	180,761			180,761	
8000 Revenue from Federal Sources	1,163,718			1,163,718	
9990 Insurance Recoveries					
820 Claims and Judgments Against the LEA					
830 Interest					
TOTAL Non Operating Revenues (Expenses)	\$1,375,167			\$1,375,167	
Income (Loss) Before Contributions And Transfers	\$250,670			\$250,670	

Amounts Expressed in Whole Dollars	<u>Food Service</u> <u>(51)</u>	<u>Child Care Operations</u> <u>(52)</u>	<u>Other Enterprise</u> <u>(58)</u>	<u>TOTAL</u>	<u>Internal Service</u> <u>(60)</u>
Contributions, Transfers, and Special and Extraordinary Items					
5200 Interfund Transfers – Out					
5300 Transfers Out to Component Units/Primary Governments					
5520 Special Items – Losses					
5530 Extraordinary Items – Losses					
9300 Interfund Transfers - IN					
9500 Capital Contributions					
9700 Transfers IN From Component Units/Primary Governments					
9920 Special Items – Gains					
9930 Extraordinary Items – Gains					
Change In Net Position	\$250,670			\$250,670	
0002 Net Position - Beginning of Fiscal Year	1,039,137			1,039,137	
0003 Accounting Changes / Residual Equity Transfers					
Net Position - End Of Year	\$1,289,807			\$1,289,807	

Amounts Expressed in Whole Dollars		<u>Food Service</u> <u>(51)</u>	<u>Child Care Operations</u> <u>(52)</u>	<u>Other Enterprise</u> <u>(58)</u>	<u>TOTAL</u>	<u>Internal Service(60)</u>
Cash Flows From Operating Activities						
0011	Cash Receipts From Users	649,705			649,705	
0012	Cash Receipts From Assessments Made to Other Funds					
0013	Cash Receipts From Earnings on Investments					
0014	Cash Receipts From Other Operating Revenue					
0015	Cash Payments To Employees For Services	40,030			40,030	
0016	Cash Payments For Insurance Claims					
0017	Cash Payments To Suppliers For Goods and Services	1,541,435			1,541,435	
0018	Cash Payments For Other Operating Expenses					
Net Cash Provided By (Used For) Operating Activities		(\$931,760)			(\$931,760)	
Cash Flows From Non-Capital Financing Activities						
0021	Receipts From Local Sources - 6000					
0022	Receipts From State Sources - 7000	183,307			183,307	
0023	Receipts From Federal Sources -8000	1,139,939			1,139,939	
0024	Notes and Loans Received (Repaid)					
0025	Interest Paid on Notes/Loans - 5100-830					
0026	Operating Transfers In (Out)/Residual Equity Trans					
0027	Operating Transfers In (Out) Primary Government / Comp Unit					
0028	Receipts From Refund of Prior Year Expenditures - 6991					
0029	Special and Extraordinary Gains (losses)					
0030	Receipts from Insurance Recoveries -9990					
Net Cash Prov By (Used for) Non-Capital Financing Activities		\$1,323,246			\$1,323,246	
Cash Flows From Capital and Related Financing Activities						
0031	Payments For Fac Acq, Const, and Imp - 4000					
0032	Gain / (Loss) on Sale of Fixed Assets - 6930					
0033	Proceeds From Extended Term Financing - 9200					
0034	Principal Paid on Financing Agreements					
0035	Interest Paid on Financing Agreements - 5100-830					
0036	(Inc) Dec in Contributed Capital					
Net Cash Prov By (Used for) Capital and Related Financing Activities						
Cash Flows From Investing Activities						
0041	Earnings on Investments - 6500	30,688			30,688	
0042	Purchase of Inv Securities / Deposits to Inv Pools					
0043	Receipts From Investment Pool Withdrawals					
0044	Proceeds from Sale and Maturity of Inv Securities					

LEA : 124157203 Phoenixville Area SD

Printed 12/4/2023 9:37:04 AM

0045 Loans Received (Paid)

Net Cash Prov By (Used for) Investing Activities	\$30,688	\$30,688
--	----------	----------

LEA : 124157203 Phoenixville Area SD

Printed 12/4/2023 9:37:04 AM

	<u>Food Service</u> <u>(51)</u>	<u>Child Care Operations</u> <u>(52)</u>	<u>Other Enterprise</u> <u>(58)</u>	<u>TOTAL</u>	<u>Internal Service</u> <u>(60)</u>
Net Increase (Decrease) in Cash Flows	422,174			422,174	
0004 Cash and Cash Equivalents Beginning of Year	1,105,459			1,105,459	
Cash and Cash Equivalents at Year End	\$1,527,633			\$1,527,633	
<hr/>					
Reconciliation of Operating Income (Loss) To Net Cash Provided by (Used For) Operating Activities					
0005 Operating Income (Loss) per REP	(1,124,497)			(1,124,497)	
Adjustments					
0051 Depreciation and Net Amortization	40,801			40,801	
0052 Provision for Uncollectible Accounts					
0053 Other Adjustments	106,102			106,102	
Effect of Changes in Assets, Liabilities, Deferred Outflows and Deferred Inflows					
0054 (Inc) Dec In Accounts Receivable (0120-0150)					
0055 Advances to Other Funds	1,227			1,227	
0056 (Inc) Dec in Inventories (0170)	5,422			5,422	
0057 (Inc) Dec in Prepaid Expenses (0180)					
0058 (Inc) Dec in Other Current or Noncurrent Assets					
0064 Deferred Outflows (0910)					
0059 Inc (Dec) in Accounts Payable (0400-0450)	9,278			9,278	
0060 Inc (Dec) in Accrued Salaries/Benefits (0461)					
0065 Inc (Dec) in Net Pension Liabilities (0570)					
0066 Inc (Dec) in Other Postemp Benefit Oblig (0560)					
0061 Inc (Dec) in Payroll Deductions/Withholding (0462)					
0062 Inc (Dec) in Unearned Revenue (0480)	43,253			43,253	
0063 Inc (Dec) in Other Current or Noncurrent Liabilities	(13,346)			(13,346)	
0067 Deferred Inflows (0950)					
Total Adjustments	\$192,737			\$192,737	
Cash Provided By (Used for) Total	(\$931,760)			(\$931,760)	

COMBINED STATEMENT OF CASH FLOWS
SCHEDULE OF NONCASH INVESTING, CAPITAL, AND FINANCING ACTIVITIES

Explanation of Transaction and Balance Sheet Effect	Amount
Total	

LEA : 124157203 Phoenixville Area SD

Printed 12/4/2023 9:37:05 AM

Amounts Expressed in Whole Dollars		<u>Private Purpose Trust</u> <u>(71)</u>	<u>Investment Trust</u> <u>(72)</u>	<u>Pension Trust</u> <u>(73)</u>	<u>Student Activity Custodial</u> <u>(81)</u>
Assets And Deferred Outflows Of Resources					
Assets					
0100	Cash and Cash Equivalents	14,787			291,165
0110	Investments				
0130	Due From Other Funds				
0140	Due from Other Governments, Primary Government and Component Units				
0150	Other Receivables				
0170	Inventories				
0180	Prepaid Expenses (Expenditures)				
0190	Other Current Assets				
0220	Buildings and Building Improvements (Net)				
0230	Tangible Property and Intangible Right-To-Use Assets (Net)				
Total Assets		\$14,787			\$291,165
0910	Deferred Outflows of Resources				
Total Assets And Deferred Outflows Of Resources		\$14,787			\$291,165

LEA : 124157203 Phoenixville Area SD

Printed 12/4/2023 9:37:05 AM

Amounts Expressed in Whole Dollars		<u>Other Custodial</u> <u>(89)</u>	<u>Fiduciary Component Units</u> <u>(98)</u>	<u>Total Fiduciary Funds</u>
Assets And Deferred Outflows Of Resources				
Assets				
0100	Cash and Cash Equivalents			305,952
0110	Investments			
0130	Due From Other Funds			
0140	Due from Other Governments, Primary Government and Component Units			
0150	Other Receivables			
0170	Inventories			
0180	Prepaid Expenses (Expenditures)			
0190	Other Current Assets			
0220	Buildings and Building Improvements (Net)			
0230	Tangible Property and Intangible Right-To-Use Assets (Net)			
Total Assets				\$305,952
0910	Deferred Outflows of Resources			
Total Assets And Deferred Outflows Of Resources				\$305,952

LEA : 124157203 Phoenixville Area SD

Printed 12/4/2023 9:37:05 AM

Amounts Expressed in Whole Dollars	<u>Private Purpose Trust</u> <u>(71)</u>	<u>Investment Trust</u> <u>(72)</u>	<u>Pension Trust</u> <u>(73)</u>	<u>Student Activity Custodial</u> <u>(81)</u>
Liabilities, Deferred Inflows Of Resources And Net Position				
Liabilities				
0400 Due to Other Funds				
0410 Due to Other Governments, Primary Government and Component Units				
0420 Accounts Payable				
0430 Contracts Payable				
0450 Short-Term Payables				
0460 Payroll Accruals and Withholdings				
0480 Unearned Revenues				
0490 Other Current Liabilities				
Total Liabilities				
0950 Deferred Inflows of Resources				
Net Position				
0791 Net Investment in Capital Assets				
0009 Restricted Net Position (0792 – 0798)	14,787			291,165
0799 Unrestricted Net Position				
Total Net Position	\$14,787			\$291,165
Total Liabilities, Deferred Inflows Of Resources And Net Position	\$14,787			\$291,165

LEA : 124157203 Phoenixville Area SD

Printed 12/4/2023 9:37:05 AM

Amounts Expressed in Whole Dollars		<u>Other Custodial</u> <u>(89)</u>	<u>Fiduciary Component Units</u> <u>(98)</u>	<u>Total Fiduciary Funds</u>
Liabilities, Deferred Inflows Of Resources And Net Position				
Liabilities				
0400	Due to Other Funds			
0410	Due to Other Governments, Primary Government and Component Units			
0420	Accounts Payable			
0430	Contracts Payable			
0450	Short-Term Payables			
0460	Payroll Accruals and Withholdings			
0480	Unearned Revenues			
0490	Other Current Liabilities			
Total Liabilities				
0950	Deferred Inflows of Resources			
Net Position				
0791	Net Investment in Capital Assets			
0009	Restricted Net Position (0792 – 0798)			305,952
0799	Unrestricted Net Position			
Total Net Position				\$305,952
Total Liabilities, Deferred Inflows Of Resources And Net Position				\$305,952

LEA : 124157203 Phoenixville Area SD

Printed 12/4/2023 9:37:06 AM

Amounts Expressed in Whole Dollars	<u>Private Purpose Trust</u> <u>(71)</u>	<u>Investment Trust</u> <u>(72)</u>	<u>Pension Trust</u> <u>(73)</u>	<u>Student Activity</u> <u>Custodial</u> <u>(81)</u>	<u>Other Custodial</u> <u>(89)</u>	<u>Fiduciary Component</u> <u>Units</u> <u>(98)</u>
Additions						
0091 Gifts and Contributions	5,530					
0095 Net Investment Earnings	25			318		
0092 Other Additions				407,862		
Deductions						
0093 Scholarships Awarded						
0094 Other Deductions	5,753			408,059		
Change In Net Position	(\$198)			\$121		
0006 Net Position – Beginning of Fiscal Year	14,985			291,044		
0007 Net Position Held in Trust for Pension Benefits						
Net Position - End of Fiscal Year	\$14,787			\$291,165		

LEA : 124157203 Phoenixville Area SD

Printed 12/4/2023 9:37:06 AM

Amounts Expressed in Whole Dollars		<u>Total Fiduciary</u>
		<u>Funds</u>
Additions		
0091	Gifts and Contributions	5,530
0095	Net Investment Earnings	343
0092	Other Additions	407,862
Deductions		
0093	Scholarships Awarded	
0094	Other Deductions	413,812
Change In Net Position		(\$77)
0006	Net Position – Beginning of Fiscal Year	306,029
0007	Net Position Held in Trust for Pension Benefits	
Net Position - End of Fiscal Year		\$305,952

	Revenue Reported In Current Year	Current Year Tax Accrual	Prior Year Tax Accrual	Taxes Collected In Current Year
Revenue from Local Sources				
6111 Current Real Estate Taxes	68,609,062.57			68,609,062.57
6112 Interim Real Estate Taxes	2,047,712.20			2,047,712.20
6113 Public Utility Realty Taxes	76,252.08			76,252.08
6141 Current Act 511 Per Capita Taxes	167,721.21			167,721.21
6151 Current Act 511 Earned Income Taxes	9,156,760.91			9,156,760.91
6152 Current Act 511 Occupation Taxes	1,684,320.11			1,684,320.11
6153 Current Act 511 Real Estate Transfer Taxes	1,786,974.06			1,786,974.06
6411 Delinquent Real Estate Taxes	1,313,963.76			1,313,963.76
6440 Delinquent Local Enabling Taxes - Flat Rate Assessments	1,225,609.92			1,225,609.92
6500 Earnings on Investments	2,298,501.89			
6700 Revenues from LEA Activities	100,626.00			
6832 Federal IDEA Revenue Received as Pass Through	566,249.08			
6910 Rentals	446,448.59			
6920 Contributions and Donations from Private Sources	(2,545.28)			
6942 Summer School Tuition	8,150.00			
6991 Refunds of a Prior Year Expenditure	35,263.18			
6992 Energy Efficiency Revenues and Incentives	7,216.42			
6999 Other Revenues Not Specified Above	148,260.16			
TOTAL Revenue from Local Sources	\$89,676,546.86			\$86,068,376.82

	Revenue Reported In Current Year			
<u>Revenue from State Sources</u>				
7111 Basic Education Funding-Formula	6,028,726.31			
7112 Basic Education Funding-Social Security	1,501,999.20			
7160 Tuition for Orphans Subsidy	78,111.84			
7271 Special Education funds for School-Aged Pupils	1,916,350.44			
7311 Pupil Transportation Subsidy	751,269.21			
7312 Nonpublic and Charter School Pupil Transportation Subsidy	247,170.00			
7320 Rental and Sinking Fund Payments / Building Reimbursement Subsidy	364,931.62			
7330 Health Services (Medical, Dental, Nurse, Act 25)	76,474.02			
7340 State Property Tax Reduction Allocation	1,693,388.84			
7362 School Mental Health & Safety and Security Grants	32,655.00			
7505 Ready to Learn Block Grant	377,795.00			
7820 State Share of Retirement Contributions	7,204,396.12			
TOTAL Revenue from State Sources	\$20,273,267.60			

	Revenue Reported In Current Year			
<u>Revenue from Federal Sources</u>				
8390 Other Restricted Federal Grants-in-Aid Directly from the Federal Government	18,493.00			
8514 Title I - Improving the Academic Achievement of the Disadvantaged	536,613.00			
8515 Title II - Preparing, Training, and Recruiting High Quality Teachers and Principals	83,528.00			
8516 Title III - Language Instruction for English Learners and Immigrant Students	35,571.73			
8517 Title IV - 21st Century Schools	35,179.00			
8741 Elementary and Secondary School Emergency Relief Fund (ESSER)	0.60			
8743 ESSER II - Elementary and Secondary School Emergency Relief Fund	474,926.02			
8744 ARP ESSER - Elementary and Secondary School Emergency Relief Fund	1,180,483.32			
8751 ARP ESSER Learning Loss	102,226.28			
8752 ARP ESSER Summer Programs	16,834.99			
8753 ARP ESSER Afterschool Programs	21,599.47			
8810 School-Based Access Medicaid Reimbursement Program (SBAP) Reimbursements (Access)	599,626.95			
8820 Medical Assistance Reimbursement for Administrative Claiming (Quarterly) Program	19,031.92			
TOTAL Revenue from Federal Sources	\$3,124,114.28			

	Revenue Reported In Current Year	
<u>Other Financing Sources</u>		
9220 Leases and Other Right-to-Use Arrangements	38,984.21	
TOTAL Other Financing Sources	\$38,984.21	
TOTAL FROM ALL SOURCES	\$113,112,912.95	\$86,068,376.82

LEA : 124157203 Phoenixville Area SD

Printed 12/4/2023 9:37:09 AM

	<u>General Fund (10)</u>	<u>Student Sponsored Activity Fund (21)</u>	<u>Public Purpose Trust (27)</u>	<u>Other Compt Approved (28)</u>	<u>Athletic / Activity (29)</u>	<u>Capital Reserve (690, 1850) (31)</u>
6000 Revenue from Local Sources						
6111 Current Real Estate Taxes	68,609,062.57					
6112 Interim Real Estate Taxes	2,047,712.20					
6113 Public Utility Realty Taxes	76,252.08					
6141 Current Act 511 Per Capita Taxes	167,721.21					
6151 Current Act 511 Earned Income Taxes	9,156,760.91					
6152 Current Act 511 Occupation Taxes	1,684,320.11					
6153 Current Act 511 Real Estate Transfer Taxes	1,786,974.06					
6411 Delinquent Real Estate Taxes	1,313,963.76					
6440 Delinquent Local Enabling Taxes - Flat Rate Assessments	1,225,609.92					
6500 Earnings on Investments	2,298,501.89					
6700 Revenues from LEA Activities	100,626.00					
6832 Federal IDEA Revenue Received as Pass Through	566,249.08					
6910 Rentals	446,448.59					
6920 Contributions and Donations from Private Sources	(2,545.28)					
6942 Summer School Tuition	8,150.00					
6991 Refunds of a Prior Year Expenditure	35,263.18					
6992 Energy Efficiency Revenues and Incentives	7,216.42					
6999 Other Revenues Not Specified Above	148,260.16					
6000 Total Revenue from Local Sources	\$89,676,546.86					
7000 Revenue from State Sources						
7111 Basic Education Funding-Formula	6,028,726.31					
7112 Basic Education Funding-Social Security	1,501,999.20					
7160 Tuition for Orphans Subsidy	78,111.84					
7271 Special Education funds for School-Aged Pupils	1,916,350.44					
7311 Pupil Transportation Subsidy	751,269.21					
7312 Nonpublic and Charter School Pupil Transportation Subsidy	247,170.00					
7320 Rental and Sinking Fund Payments / Building Reimbursement Subsidy	364,931.62					
7330 Health Services (Medical, Dental, Nurse, Act 25)	76,474.02					
7340 State Property Tax Reduction Allocation	1,693,388.84					
7362 School Mental Health & Safety and Security Grants	32,655.00					
7505 Ready to Learn Block Grant	377,795.00					
7820 State Share of Retirement Contributions	7,204,396.12					
7000 Total Revenue from State Sources	\$20,273,267.60					
8000 Revenue from Federal Sources						
8390 Other Restricted Federal Grants-in-Aid Directly from the Federal Government	18,493.00					

LEA : 124157203 Phoenixville Area SD

Printed 12/4/2023 9:37:09 AM

	<u>Capital Reserve</u> <u>(1431) (32)</u>	<u>Other Capital</u> <u>Projects Fund (39)</u>	<u>Debt Service (40)</u>	<u>Permanent (90)</u>	<u>Total</u>
6000 Revenue from Local Sources					
6111 Current Real Estate Taxes					68,609,062.57
6112 Interim Real Estate Taxes					2,047,712.20
6113 Public Utility Realty Taxes					76,252.08
6141 Current Act 511 Per Capita Taxes					167,721.21
6151 Current Act 511 Earned Income Taxes					9,156,760.91
6152 Current Act 511 Occupation Taxes					1,684,320.11
6153 Current Act 511 Real Estate Transfer Taxes					1,786,974.06
6411 Delinquent Real Estate Taxes					1,313,963.76
6440 Delinquent Local Enabling Taxes - Flat Rate Assessments					1,225,609.92
6500 Earnings on Investments	41,973.22	126,833.21			2,467,308.32
6700 Revenues from LEA Activities					100,626.00
6832 Federal IDEA Revenue Received as Pass Through					566,249.08
6910 Rentals					446,448.59
6920 Contributions and Donations from Private Sources					(2,545.28)
6942 Summer School Tuition					8,150.00
6991 Refunds of a Prior Year Expenditure					35,263.18
6992 Energy Efficiency Revenues and Incentives					7,216.42
6999 Other Revenues Not Specified Above					148,260.16
6000 Total Revenue from Local Sources	\$41,973.22	\$126,833.21			\$89,845,353.29
7000 Revenue from State Sources					
7111 Basic Education Funding-Formula					6,028,726.31
7112 Basic Education Funding-Social Security					1,501,999.20
7160 Tuition for Orphans Subsidy					78,111.84
7271 Special Education funds for School-Aged Pupils					1,916,350.44
7311 Pupil Transportation Subsidy					751,269.21
7312 Nonpublic and Charter School Pupil Transportation Subsidy					247,170.00
7320 Rental and Sinking Fund Payments / Building Reimbursement Subsidy					364,931.62
7330 Health Services (Medical, Dental, Nurse, Act 25)					76,474.02
7340 State Property Tax Reduction Allocation					1,693,388.84
7362 School Mental Health & Safety and Security Grants					32,655.00
7505 Ready to Learn Block Grant					377,795.00
7820 State Share of Retirement Contributions					7,204,396.12
7000 Total Revenue from State Sources					\$20,273,267.60
8000 Revenue from Federal Sources					
8390 Other Restricted Federal Grants-in-Aid Directly from the Federal Government					18,493.00

LEA : 124157203 Phoenixville Area SD

Printed 12/4/2023 9:37:09 AM

	<u>General Fund (10)</u>	<u>Student Sponsored</u> <u>Activity Fund (21)</u>	<u>Public Purpose</u> <u>Trust (27)</u>	<u>Other Compt</u> <u>Approved (28)</u>	<u>Athletic / Activity</u> <u>(29)</u>	<u>Capital Reserve</u> <u>(690, 1850) (31)</u>
8000 Revenue from Federal Sources						
8514 Title I - Improving the Academic Achievement of the Disadvantaged	536,613.00					
8515 Title II - Preparing, Training, and Recruiting High Quality Teachers and Principals	83,528.00					
8516 Title III - Language Instruction for English Learners and Immigrant Students	35,571.73					
8517 Title IV - 21st Century Schools	35,179.00					
8741 Elementary and Secondary School Emergency Relief Fund (ESSER)	0.60					
8743 ESSER II - Elementary and Secondary School Emergency Relief Fund	474,926.02					
8744 ARP ESSER - Elementary and Secondary School Emergency Relief Fund	1,180,483.32					
8751 ARP ESSER Learning Loss	102,226.28					
8752 ARP ESSER Summer Programs	16,834.99					
8753 ARP ESSER Afterschool Programs	21,599.47					
8810 School-Based Access Medicaid Reimbursement Program (SBAP) Reimbursements (Access)	599,626.95					
8820 Medical Assistance Reimbursement for Administrative Claiming (Quarterly) Program	19,031.92					
8000 Total Revenue from Federal Sources	\$3,124,114.28					
9000 Other Financing Sources						
9110 Face Value of Bonds Issued						
9220 Leases and Other Right-to-Use Arrangements	38,984.21					
9310 General Fund Transfers						
9400 Sale of or Compensation for Loss of Fixed Assets						
9000 Total Other Financing Sources	\$38,984.21					
Total From All Sources	\$113,112,912.95					

LEA : 124157203 Phoenixville Area SD

Printed 12/4/2023 9:37:09 AM

	<u>Capital Reserve</u> <u>(1431) (32)</u>	<u>Other Capital</u> <u>Projects Fund (39)</u>	<u>Debt Service (40)</u>	<u>Permanent (90)</u>	<u>Total</u>
8000 Revenue from Federal Sources					
8514 Title I - Improving the Academic Achievement of the Disadvantaged					536,613.00
8515 Title II - Preparing, Training, and Recruiting High Quality Teachers and Principals					83,528.00
8516 Title III - Language Instruction for English Learners and Immigrant Students					35,571.73
8517 Title IV - 21st Century Schools					35,179.00
8741 Elementary and Secondary School Emergency Relief Fund (ESSER)					0.60
8743 ESSER II - Elementary and Secondary School Emergency Relief Fund					474,926.02
8744 ARP ESSER - Elementary and Secondary School Emergency Relief Fund					1,180,483.32
8751 ARP ESSER Learning Loss					102,226.28
8752 ARP ESSER Summer Programs					16,834.99
8753 ARP ESSER Afterschool Programs					21,599.47
8810 School-Based Access Medicaid Reimbursement Program (SBAP) Reimbursements (Access)					599,626.95
8820 Medical Assistance Reimbursement for Administrative Claiming (Quarterly) Program					19,031.92
8000 Total Revenue from Federal Sources					\$3,124,114.28
9000 Other Financing Sources					
9110 Face Value of Bonds Issued		35,000,000.00			35,000,000.00
9220 Leases and Other Right-to-Use Arrangements		857,482.35			896,466.56
9310 General Fund Transfers	1,300,000.00				1,300,000.00
9400 Sale of or Compensation for Loss of Fixed Assets		224,665.00			224,665.00
9000 Total Other Financing Sources	\$1,300,000.00	\$36,082,147.35			\$37,421,131.56
Total From All Sources	\$1,341,973.22	\$36,208,980.56			\$150,663,866.73

LEA : 124157203 Phoenixville Area SD

Printed 12/4/2023 9:37:10 AM

	<u>General Fund (10)</u>	<u>Student Sponsored Activity Fund (21)</u>	<u>Public Purpose Trust (27)</u>	<u>Other Compt Approved (28)</u>	<u>Athletic / Activity (29)</u>	<u>Capital Reserve (690. 1850) (31)</u>
Revenue from Local Sources	89,676,546.86					
Revenue from State Sources	20,273,267.60					
Revenue from Federal Sources	3,124,114.28					
Other Financing Sources	38,984.21					
Total From All Sources	\$113,112,912.95					

LEA : 124157203 Phoenixville Area SD

Printed 12/4/2023 9:37:10 AM

	<u>Capital Reserve (1431)</u> <u>(32)</u>	<u>Other Capital Projects</u> <u>Fund (39)</u>	<u>Debt Service (40)</u>	<u>Permanent (90)</u>	<u>Total</u>
Revenue from Local Sources	41,973.22	126,833.21			89,845,353.29
Revenue from State Sources					20,273,267.60
Revenue from Federal Sources					3,124,114.28
Other Financing Sources	1,300,000.00	36,082,147.35			37,421,131.56
Total From All Sources	\$1,341,973.22	\$36,208,980.56			\$150,663,866.73

LEA : 124157203 Phoenixville Area SD

Printed 12/4/2023 9:37:13 AM

General Fund (10)

1000 Instruction	Total
100 <u>Personnel Services – Salaries</u>	
100 Personnel Services – Salaries	27,311,637.58
Total Personnel Services – Salaries	\$27,311,637.58
200 <u>Personnel Services – Employee Benefits</u>	
210 Group Insurance – Contracted Provider	14,431.63
220 Social Security Contributions	2,005,454.97
230 PSERS Retirement Contributions	9,559,560.18
270 Group Insurance – Self-Insurance	5,367,480.10
292 Health Savings Accounts	5,250.00
299 All Other Employee Benefits	(7,161.51)
Total Personnel Services – Employee Benefits	\$16,945,015.37
300 <u>Purchased Professional and Technical Services</u>	
322 Professional Educational Services – Ius	1,831,876.83
329 Professional Educational Services – Other	1,028,581.13
330 Other Professional Services	390,722.15
Total Purchased Professional and Technical Services	\$3,251,180.11
400 <u>Purchased Property Services</u>	
430 Repairs and Maintenance Services	38,268.04
440 Rentals	708,005.38
Total Purchased Property Services	\$746,273.42
500 <u>Other Purchased Services</u>	
510 Student Transportation Services	185,573.28
530 Communications	44.61
550 Printing and Binding	7,916.97
561 Tuition To Other School Districts Within the State	84,986.19
562 Tuition To Pennsylvania Charter Schools	4,743,291.76
563 Tuition To Nonpublic Schools	563,078.13
564 Tuition To Career and Technology Centers	855,104.00
566 Tuition To Institutions of Higher Education and Technical Institutes	16,750.00
567 Tuition To Approved Private Schools (APS) and PA Chartered Schools for the Deaf and Blind	240,349.32
568 Tuition To Private Residential Rehabilitative Institutions (PRRI) [In-State] and Detention Centers	177,521.33
569 Tuition – Other	309,895.00
580 Travel	191.15
591 Services Purchased Locally	310.23
Total Other Purchased Services	\$7,185,011.97
600 <u>Supplies</u>	
610 General Supplies	557,760.43
630 Food	1,184.35
640 Books and Periodicals	102,893.62
650 Supplies & Fees – Technology Related	361,397.31
Total Supplies	\$1,023,235.71
700 <u>Property</u>	
752 Capital Equipment – Original and Additional	5,855.00

LEA : 124157203 Phoenixville Area SD

Printed 12/4/2023 9:37:13 AM

General Fund (10)		
1000 Instruction		<u>Total</u>
700 <u>Property</u>		
756 Capitalized Technology Equipment – Original	121,133.88	
Total Property	\$126,988.88	
800 <u>Other Objects</u>		
810 Dues and Fees	12,378.00	
870 Donated Services	3,059.65	
890 Miscellaneous Expenditures	10,396.96	
Total Other Objects	\$25,834.61	
Total 1000 Instruction	\$56,615,177.65	

LEA : 124157203 Phoenixville Area SD

Printed 12/4/2023 9:37:13 AM

General Fund (10)

1100 Regular Programs – Elementary / Secondary

	Elementary	Secondary	Federal	Total
100 <u>Personnel Services – Salaries</u>				
100 Personnel Services – Salaries	11,522,073.04	9,383,785.16	627,604.95	21,533,463.15
Total Personnel Services – Salaries	\$11,522,073.04	\$9,383,785.16	\$627,604.95	\$21,533,463.15
200 <u>Personnel Services – Employee Benefits</u>				
210 Group Insurance – Contracted Provider	1,523.16	14,372.05	(1,463.58)	14,431.63
220 Social Security Contributions	882,766.82	696,801.27	2,220.72	1,581,788.81
230 PSERS Retirement Contributions	4,229,699.67	3,294,086.97	11,202.81	7,534,989.45
270 Group Insurance – Self-Insurance	2,372,196.67	1,613,597.18	9,219.68	3,995,013.53
292 Health Savings Accounts	1,870.00	1,880.00		3,750.00
299 All Other Employee Benefits	(7,161.51)			(7,161.51)
Total Personnel Services – Employee Benefits	\$7,480,894.81	\$5,620,737.47	\$21,179.63	\$13,122,811.91
300 <u>Purchased Professional and Technical Services</u>				
322 Professional Educational Services – Ius	50,479.92	30.00	79,806.00	130,315.92
329 Professional Educational Services – Other	467,328.06	373,801.27	500.00	841,629.33
330 Other Professional Services	2,101.40	18,826.65	11,026.00	31,954.05
Total Purchased Professional and Technical Services	\$519,909.38	\$392,657.92	\$91,332.00	\$1,003,899.30
400 <u>Purchased Property Services</u>				
430 Repairs and Maintenance Services	23,527.90	14,740.14		38,268.04
440 Rentals	251,970.99	456,034.39		708,005.38
Total Purchased Property Services	\$275,498.89	\$470,774.53		\$746,273.42
500 <u>Other Purchased Services</u>				
510 Student Transportation Services	5,604.01	1,646.19	2,264.96	9,515.16
550 Printing and Binding		7,916.97		7,916.97
562 Tuition To Pennsylvania Charter Schools	1,669,871.07	1,313,219.56		2,983,090.63
563 Tuition To Nonpublic Schools		50,737.75		50,737.75
580 Travel	191.15			191.15
Total Other Purchased Services	\$1,675,666.23	\$1,373,520.47	\$2,264.96	\$3,051,451.66
600 <u>Supplies</u>				
610 General Supplies	337,358.23	138,364.64	31,806.81	507,529.68
630 Food	853.50	202.91		1,056.41
640 Books and Periodicals	51,011.87	10,477.29	5,542.17	67,031.33
650 Supplies & Fees – Technology Related	189,216.59	45,936.13	84,533.12	319,685.84
Total Supplies	\$578,440.19	\$194,980.97	\$121,882.10	\$895,303.26
700 <u>Property</u>				
756 Capitalized Technology Equipment – Original	49,315.00	71,818.88		121,133.88
Total Property	\$49,315.00	\$71,818.88		\$121,133.88
800 <u>Other Objects</u>				
810 Dues and Fees	653.20	624.80		1,278.00
890 Miscellaneous Expenditures	833.65	7,622.31	1,302.00	9,757.96
Total Other Objects	\$1,486.85	\$8,247.11	\$1,302.00	\$11,035.96
Total 1100 Regular Programs – Elementary / Secondary	\$22,103,284.39	\$17,516,522.51	\$865,565.64	\$40,485,372.54

LEA : 124157203 Phoenixville Area SD

Printed 12/4/2023 9:37:13 AM

General Fund (10)

1110 Regular Programs

	Elementary	Secondary	Federal	Total
100 <u>Personnel Services – Salaries</u>				
100 Personnel Services – Salaries	11,522,073.04	9,383,785.16		20,905,858.20
Total Personnel Services – Salaries	\$11,522,073.04	\$9,383,785.16		\$20,905,858.20
200 <u>Personnel Services – Employee Benefits</u>				
210 Group Insurance – Contracted Provider	1,523.16	14,372.05		15,895.21
220 Social Security Contributions	882,766.82	696,801.27		1,579,568.09
230 PSERS Retirement Contributions	4,229,699.67	3,294,086.97		7,523,786.64
270 Group Insurance – Self-Insurance	2,372,196.67	1,613,597.18		3,985,793.85
292 Health Savings Accounts	1,870.00	1,880.00		3,750.00
299 All Other Employee Benefits	(7,161.51)			(7,161.51)
Total Personnel Services – Employee Benefits	\$7,480,894.81	\$5,620,737.47		\$13,101,632.28
300 <u>Purchased Professional and Technical Services</u>				
322 Professional Educational Services – Ius	50,479.92	30.00		50,509.92
329 Professional Educational Services – Other	467,328.06	373,801.27		841,129.33
330 Other Professional Services	2,101.40	18,826.65		20,928.05
Total Purchased Professional and Technical Services	\$519,909.38	\$392,657.92		\$912,567.30
400 <u>Purchased Property Services</u>				
430 Repairs and Maintenance Services	23,527.90	14,740.14		38,268.04
440 Rentals	251,970.99	456,034.39		708,005.38
Total Purchased Property Services	\$275,498.89	\$470,774.53		\$746,273.42
500 <u>Other Purchased Services</u>				
510 Student Transportation Services	5,604.01	1,646.19		7,250.20
550 Printing and Binding		7,916.97		7,916.97
562 Tuition To Pennsylvania Charter Schools	1,669,871.07	1,313,219.56		2,983,090.63
563 Tuition To Nonpublic Schools		50,737.75		50,737.75
580 Travel	191.15			191.15
Total Other Purchased Services	\$1,675,666.23	\$1,373,520.47		\$3,049,186.70
600 <u>Supplies</u>				
610 General Supplies	337,358.23	138,364.64		475,722.87
630 Food	853.50	202.91		1,056.41
640 Books and Periodicals	51,011.87	10,477.29		61,489.16
650 Supplies & Fees – Technology Related	189,216.59	45,936.13		235,152.72
Total Supplies	\$578,440.19	\$194,980.97		\$773,421.16
700 <u>Property</u>				
756 Capitalized Technology Equipment – Original	49,315.00	71,818.88		121,133.88
Total Property	\$49,315.00	\$71,818.88		\$121,133.88
800 <u>Other Objects</u>				
810 Dues and Fees	653.20	624.80		1,278.00
890 Miscellaneous Expenditures	833.65	7,622.31		8,455.96
Total Other Objects	\$1,486.85	\$8,247.11		\$9,733.96
Total 1110 Regular Programs	\$22,103,284.39	\$17,516,522.51		\$39,619,806.90

LEA : 124157203 Phoenixville Area SD

Printed 12/4/2023 9:37:13 AM

General Fund (10)				
1190 Federally-Funded Regular Programs	Elementary	Secondary	Federal	Total
100 Personnel Services – Salaries				
100 Personnel Services – Salaries			627,604.95	627,604.95
Total Personnel Services – Salaries			\$627,604.95	\$627,604.95
200 Personnel Services – Employee Benefits				
210 Group Insurance – Contracted Provider			(1,463.58)	(1,463.58)
220 Social Security Contributions			2,220.72	2,220.72
230 PSERS Retirement Contributions			11,202.81	11,202.81
270 Group Insurance – Self-Insurance			9,219.68	9,219.68
Total Personnel Services – Employee Benefits			\$21,179.63	\$21,179.63
300 Purchased Professional and Technical Services				
322 Professional Educational Services – Ius			79,806.00	79,806.00
329 Professional Educational Services – Other			500.00	500.00
330 Other Professional Services			11,026.00	11,026.00
Total Purchased Professional and Technical Services			\$91,332.00	\$91,332.00
500 Other Purchased Services				
510 Student Transportation Services			2,264.96	2,264.96
Total Other Purchased Services			\$2,264.96	\$2,264.96
600 Supplies				
610 General Supplies			31,806.81	31,806.81
640 Books and Periodicals			5,542.17	5,542.17
650 Supplies & Fees – Technology Related			84,533.12	84,533.12
Total Supplies			\$121,882.10	\$121,882.10
800 Other Objects				
890 Miscellaneous Expenditures			1,302.00	1,302.00
Total Other Objects			\$1,302.00	\$1,302.00
Total 1190 Federally-Funded Regular Programs			\$865,565.64	\$865,565.64

LEA : 124157203 Phoenixville Area SD

Printed 12/4/2023 9:37:13 AM

General Fund (10)				
1200 Special Programs – Elementary / Secondary	Elementary	Secondary	Federal	Total
100 Personnel Services – Salaries				
100 Personnel Services – Salaries	2,753,547.38	2,474,469.17		5,228,016.55
Total Personnel Services – Salaries	\$2,753,547.38	\$2,474,469.17		\$5,228,016.55
200 Personnel Services – Employee Benefits				
220 Social Security Contributions	201,966.38	180,885.34		382,851.72
230 PSERS Retirement Contributions	957,378.56	871,723.37		1,829,101.93
270 Group Insurance – Self-Insurance	656,346.14	671,101.60		1,327,447.74
292 Health Savings Accounts	900.00	600.00		1,500.00
Total Personnel Services – Employee Benefits	\$1,816,591.08	\$1,724,310.31		\$3,540,901.39
300 Purchased Professional and Technical Services				
322 Professional Educational Services – lus	1,079,890.60	130,407.63	455,249.45	1,665,547.68
329 Professional Educational Services – Other	154,025.59	32,926.21		186,951.80
330 Other Professional Services	296,639.64	20,241.00	21,384.00	338,264.64
Total Purchased Professional and Technical Services	\$1,530,555.83	\$183,574.84	\$476,633.45	\$2,190,764.12
500 Other Purchased Services				
510 Student Transportation Services	23,389.15	280.20		23,669.35
530 Communications	44.61			44.61
561 Tuition To Other School Districts Within the State	14,975.00	61,466.89		76,441.89
562 Tuition To Pennsylvania Charter Schools	1,003,698.28	756,502.85		1,760,201.13
563 Tuition To Nonpublic Schools	512,340.38			512,340.38
567 Tuition To Approved Private Schools (APS) and PA Chartered Schools for the Deaf and Blind	240,349.32			240,349.32
568 Tuition To Private Residential Rehabilitative Institutions (PRRI) [In-State] and Detention Centers	177,521.33			177,521.33
569 Tuition – Other	7,500.00	284,395.00		291,895.00
591 Services Purchased Locally	159.84	150.39		310.23
Total Other Purchased Services	\$1,979,977.91	\$1,102,795.33		\$3,082,773.24
600 Supplies				
610 General Supplies	29,684.17	14,675.45		44,359.62
640 Books and Periodicals	79.04	31,321.56		31,400.60
650 Supplies & Fees – Technology Related	13,004.79	28,706.68		41,711.47
Total Supplies	\$42,768.00	\$74,703.69		\$117,471.69
700 Property				
752 Capital Equipment – Original and Additional	5,855.00			5,855.00
Total Property	\$5,855.00			\$5,855.00
800 Other Objects				
810 Dues and Fees	11,100.00			11,100.00
890 Miscellaneous Expenditures	639.00			639.00
Total Other Objects	\$11,739.00			\$11,739.00
Total 1200 Special Programs – Elementary / Secondary	\$8,141,034.20	\$5,559,853.34	\$476,633.45	\$14,177,520.99

LEA : 124157203 Phoenixville Area SD

Printed 12/4/2023 9:37:13 AM

General Fund (10)

1210 Life Skills Support

	<u>Elementary</u>	<u>Secondary</u>	<u>Federal</u>	<u>Total</u>
100 <u>Personnel Services – Salaries</u>				
100 Personnel Services – Salaries	512,919.59	951,112.84		1,464,032.43
Total Personnel Services – Salaries	\$512,919.59	\$951,112.84		\$1,464,032.43
200 <u>Personnel Services – Employee Benefits</u>				
220 Social Security Contributions	37,685.98	69,209.64		106,895.62
230 PSERS Retirement Contributions	178,107.11	337,869.50		515,976.61
270 Group Insurance – Self-Insurance	169,195.46	300,583.20		469,778.66
292 Health Savings Accounts		250.00		250.00
Total Personnel Services – Employee Benefits	\$384,988.55	\$707,912.34		\$1,092,900.89
300 <u>Purchased Professional and Technical Services</u>				
322 Professional Educational Services – Ius	83,553.90		41,776.95	125,330.85
329 Professional Educational Services – Other	133,126.51	30,946.21		164,072.72
Total Purchased Professional and Technical Services	\$216,680.41	\$30,946.21	\$41,776.95	\$289,403.57
500 <u>Other Purchased Services</u>				
510 Student Transportation Services		280.20		280.20
562 Tuition To Pennsylvania Charter Schools	1,003,698.28	756,502.85		1,760,201.13
591 Services Purchased Locally	159.84	150.39		310.23
Total Other Purchased Services	\$1,003,858.12	\$756,933.44		\$1,760,791.56
600 <u>Supplies</u>				
610 General Supplies	788.19	3,297.66		4,085.85
Total Supplies	\$788.19	\$3,297.66		\$4,085.85
800 <u>Other Objects</u>				
810 Dues and Fees	100.00			100.00
Total Other Objects	\$100.00			\$100.00
Total 1210 Life Skills Support	\$2,119,334.86	\$2,450,202.49	\$41,776.95	\$4,611,314.30

LEA : 124157203 Phoenixville Area SD

Printed 12/4/2023 9:37:13 AM

General Fund (10)				
1220 Sensory Support	<u>Elementary</u>	<u>Secondary</u>	<u>Federal</u>	<u>Total</u>
300 <u>Purchased Professional and Technical Services</u>				
322 Professional Educational Services – lus	36,850.79			36,850.79
330 Other Professional Services	1,093.57			1,093.57
Total Purchased Professional and Technical Services	\$37,944.36			\$37,944.36
600 <u>Supplies</u>				
610 General Supplies	79.96			79.96
Total Supplies	\$79.96			\$79.96
Total 1220 Sensory Support	\$38,024.32			\$38,024.32

LEA : 124157203 Phoenixville Area SD

Printed 12/4/2023 9:37:13 AM

General Fund (10)				
1230 Emotional Support	<u>Elementary</u>	<u>Secondary</u>	<u>Federal</u>	<u>Total</u>
100 <u>Personnel Services – Salaries</u>				
100 Personnel Services – Salaries	59,508.16	64,784.74		124,292.90
Total Personnel Services – Salaries	\$59,508.16	\$64,784.74		\$124,292.90
200 <u>Personnel Services – Employee Benefits</u>				
220 Social Security Contributions	4,542.11	4,542.42		9,084.53
230 PSERS Retirement Contributions	18,318.27	22,846.27		41,164.54
270 Group Insurance – Self-Insurance	731.89	20,980.74		21,712.63
Total Personnel Services – Employee Benefits	\$23,592.27	\$48,369.43		\$71,961.70
300 <u>Purchased Professional and Technical Services</u>				
322 Professional Educational Services – Ius	531,211.43		289,082.19	820,293.62
329 Professional Educational Services – Other		1,740.00		1,740.00
330 Other Professional Services	172,599.57			172,599.57
Total Purchased Professional and Technical Services	\$703,811.00	\$1,740.00	\$289,082.19	\$994,633.19
500 <u>Other Purchased Services</u>				
561 Tuition To Other School Districts Within the State		6,804.09		6,804.09
569 Tuition – Other		284,395.00		284,395.00
Total Other Purchased Services		\$291,199.09		\$291,199.09
600 <u>Supplies</u>				
610 General Supplies	17,886.12	70.00		17,956.12
640 Books and Periodicals	79.04			79.04
650 Supplies & Fees – Technology Related	1,135.81			1,135.81
Total Supplies	\$19,100.97	\$70.00		\$19,170.97
800 <u>Other Objects</u>				
810 Dues and Fees	11,000.00			11,000.00
Total Other Objects	\$11,000.00			\$11,000.00
Total 1230 Emotional Support	\$817,012.40	\$406,163.26	\$289,082.19	\$1,512,257.85

LEA : 124157203 Phoenixville Area SD

Printed 12/4/2023 9:37:13 AM

General Fund (10)				
1240 Academic Support	<u>Elementary</u>	<u>Secondary</u>	<u>Federal</u>	<u>Total</u>
100 <u>Personnel Services – Salaries</u>				
100 Personnel Services – Salaries	2,163,784.60	1,454,855.45		3,618,640.05
Total Personnel Services – Salaries	\$2,163,784.60	\$1,454,855.45		\$3,618,640.05
200 <u>Personnel Services – Employee Benefits</u>				
220 Social Security Contributions	158,462.32	106,858.98		265,321.30
230 PSERS Retirement Contributions	754,820.47	509,681.61		1,264,502.08
270 Group Insurance – Self-Insurance	486,418.79	349,537.66		835,956.45
292 Health Savings Accounts	900.00	350.00		1,250.00
Total Personnel Services – Employee Benefits	\$1,400,601.58	\$966,428.25		\$2,367,029.83
300 <u>Purchased Professional and Technical Services</u>				
322 Professional Educational Services – lus	28,810.48		9,495.39	38,305.87
330 Other Professional Services	42,768.00		21,384.00	64,152.00
Total Purchased Professional and Technical Services	\$71,578.48		\$30,879.39	\$102,457.87
500 <u>Other Purchased Services</u>				
530 Communications	44.61			44.61
Total Other Purchased Services	\$44.61			\$44.61
600 <u>Supplies</u>				
610 General Supplies	8,846.29	11,307.79		20,154.08
640 Books and Periodicals		31,321.56		31,321.56
650 Supplies & Fees – Technology Related	11,438.11	28,706.68		40,144.79
Total Supplies	\$20,284.40	\$71,336.03		\$91,620.43
800 <u>Other Objects</u>				
890 Miscellaneous Expenditures	69.00			69.00
Total Other Objects	\$69.00			\$69.00
Total 1240 Academic Support	\$3,656,362.67	\$2,492,619.73	\$30,879.39	\$6,179,861.79

LEA : 124157203 Phoenixville Area SD

Printed 12/4/2023 9:37:13 AM

General Fund (10)

1241 Learning Support – Public	Elementary	Secondary	Federal	Total
100 Personnel Services – Salaries				
100 Personnel Services – Salaries	1,992,994.20	1,454,855.45		3,447,849.65
Total Personnel Services – Salaries	\$1,992,994.20	\$1,454,855.45		\$3,447,849.65
200 Personnel Services – Employee Benefits				
220 Social Security Contributions	145,966.18	106,858.98		252,825.16
230 PSERS Retirement Contributions	694,599.63	509,681.61		1,204,281.24
270 Group Insurance – Self-Insurance	455,476.93	349,537.66		805,014.59
292 Health Savings Accounts	900.00	350.00		1,250.00
Total Personnel Services – Employee Benefits	\$1,296,942.74	\$966,428.25		\$2,263,370.99
300 Purchased Professional and Technical Services				
322 Professional Educational Services – Ius	28,810.48		9,495.39	38,305.87
330 Other Professional Services	42,768.00		21,384.00	64,152.00
Total Purchased Professional and Technical Services	\$71,578.48		\$30,879.39	\$102,457.87
600 Supplies				
610 General Supplies	5,117.89	11,307.79		16,425.68
640 Books and Periodicals		31,321.56		31,321.56
650 Supplies & Fees – Technology Related	5,678.26	28,706.68		34,384.94
Total Supplies	\$10,796.15	\$71,336.03		\$82,132.18
Total 1241 Learning Support – Public	\$3,372,311.57	\$2,492,619.73	\$30,879.39	\$5,895,810.69

LEA : 124157203 Phoenixville Area SD

Printed 12/4/2023 9:37:13 AM

General Fund (10)

1243 Gifted Support	Elementary	Secondary	Federal	Total
100 <u>Personnel Services – Salaries</u>				
100 Personnel Services – Salaries	170,790.40			170,790.40
Total Personnel Services – Salaries	\$170,790.40			\$170,790.40
200 <u>Personnel Services – Employee Benefits</u>				
220 Social Security Contributions	12,496.14			12,496.14
230 PSERS Retirement Contributions	60,220.84			60,220.84
270 Group Insurance – Self-Insurance	30,941.86			30,941.86
Total Personnel Services – Employee Benefits	\$103,658.84			\$103,658.84
500 <u>Other Purchased Services</u>				
530 Communications	44.61			44.61
Total Other Purchased Services	\$44.61			\$44.61
600 <u>Supplies</u>				
610 General Supplies	3,728.40			3,728.40
650 Supplies & Fees – Technology Related	5,759.85			5,759.85
Total Supplies	\$9,488.25			\$9,488.25
800 <u>Other Objects</u>				
890 Miscellaneous Expenditures	69.00			69.00
Total Other Objects	\$69.00			\$69.00
Total 1243 Gifted Support	\$284,051.10			\$284,051.10

LEA : 124157203 Phoenixville Area SD

Printed 12/4/2023 9:37:13 AM

General Fund (10)

1270 Multi-Handicapped Support	<u>Elementary</u>	<u>Secondary</u>	<u>Federal</u>	<u>Total</u>
300 <u>Purchased Professional and Technical Services</u>				
322 Professional Educational Services – lus	79,579.54		29,464.49	109,044.03
Total Purchased Professional and Technical Services	\$79,579.54		\$29,464.49	\$109,044.03
600 <u>Supplies</u>				
610 General Supplies	1,943.02			1,943.02
650 Supplies & Fees – Technology Related	70.87			70.87
Total Supplies	\$2,013.89			\$2,013.89
Total 1270 Multi-Handicapped Support	\$81,593.43		\$29,464.49	\$111,057.92

LEA : 124157203 Phoenixville Area SD

Printed 12/4/2023 9:37:13 AM

General Fund (10)

1280 Early Intervention Support

	<u>Elementary</u>	<u>Secondary</u>	<u>Federal</u>	<u>Total</u>
300 <u>Purchased Professional and Technical Services</u>				
322 Professional Educational Services – lus	28,281.92			28,281.92
Total Purchased Professional and Technical Services	\$28,281.92			\$28,281.92
Total 1280 Early Intervention Support	\$28,281.92			\$28,281.92

LEA : 124157203 Phoenixville Area SD

Printed 12/4/2023 9:37:13 AM

General Fund (10)				
1290 Special Programs - Other Support	<u>Elementary</u>	<u>Secondary</u>	<u>Federal</u>	<u>Total</u>
100 <u>Personnel Services – Salaries</u>				
100 Personnel Services – Salaries	17,335.03	3,716.14		21,051.17
Total Personnel Services – Salaries	\$17,335.03	\$3,716.14		\$21,051.17
200 <u>Personnel Services – Employee Benefits</u>				
220 Social Security Contributions	1,275.97	274.30		1,550.27
230 PSERS Retirement Contributions	6,132.71	1,325.99		7,458.70
Total Personnel Services – Employee Benefits	\$7,408.68	\$1,600.29		\$9,008.97
300 <u>Purchased Professional and Technical Services</u>				
322 Professional Educational Services – Ius	291,602.54	130,407.63	85,430.43	507,440.60
329 Professional Educational Services – Other	20,899.08	240.00		21,139.08
330 Other Professional Services	80,178.50	20,241.00		100,419.50
Total Purchased Professional and Technical Services	\$392,680.12	\$150,888.63	\$85,430.43	\$628,999.18
500 <u>Other Purchased Services</u>				
510 Student Transportation Services	23,389.15			23,389.15
561 Tuition To Other School Districts Within the State	14,975.00	54,662.80		69,637.80
563 Tuition To Nonpublic Schools	512,340.38			512,340.38
567 Tuition To Approved Private Schools (APS) and PA Chartered Schools for the Deaf and Blind	240,349.32			240,349.32
568 Tuition To Private Residential Rehabilitative Institutions (PRRI) [In-State] and Detention Centers	177,521.33			177,521.33
569 Tuition – Other	7,500.00			7,500.00
Total Other Purchased Services	\$976,075.18	\$54,662.80		\$1,030,737.98
600 <u>Supplies</u>				
610 General Supplies	140.59			140.59
650 Supplies & Fees – Technology Related	360.00			360.00
Total Supplies	\$500.59			\$500.59
700 <u>Property</u>				
752 Capital Equipment – Original and Additional	5,855.00			5,855.00
Total Property	\$5,855.00			\$5,855.00
800 <u>Other Objects</u>				
890 Miscellaneous Expenditures	570.00			570.00
Total Other Objects	\$570.00			\$570.00
Total 1290 Special Programs - Other Support	\$1,400,424.60	\$210,867.86	\$85,430.43	\$1,696,722.89

LEA : 124157203 Phoenixville Area SD

Printed 12/4/2023 9:37:13 AM

General Fund (10)

1300 Vocational Education

500 Other Purchased Services

	<u>Elementary</u>	<u>Secondary</u>	<u>Federal</u>	<u>Total</u>
564 Tuition To Career and Technology Centers		855,104.00		855,104.00
Total Other Purchased Services		\$855,104.00		\$855,104.00
Total 1300 Vocational Education		\$855,104.00		\$855,104.00

LEA : 124157203 Phoenixville Area SD

Printed 12/4/2023 9:37:13 AM

General Fund (10)				
1400 Other Instructional Programs – Elementary / Secondary	<u>Elementary</u>	<u>Secondary</u>	<u>Federal</u>	<u>Total</u>
100 <u>Personnel Services – Salaries</u>				
100 Personnel Services – Salaries	212,006.32	246,622.56	91,529.00	550,157.88
Total Personnel Services – Salaries	\$212,006.32	\$246,622.56	\$91,529.00	\$550,157.88
200 <u>Personnel Services – Employee Benefits</u>				
220 Social Security Contributions	22,874.89	17,939.55		40,814.44
230 PSERS Retirement Contributions	108,509.61	86,959.19		195,468.80
270 Group Insurance – Self-Insurance	2.81	45,016.02		45,018.83
Total Personnel Services – Employee Benefits	\$131,387.31	\$149,914.76		\$281,302.07
300 <u>Purchased Professional and Technical Services</u>				
322 Professional Educational Services – Ius	33,435.63	2,577.60		36,013.23
330 Other Professional Services	20,503.46			20,503.46
Total Purchased Professional and Technical Services	\$53,939.09	\$2,577.60		\$56,516.69
500 <u>Other Purchased Services</u>				
510 Student Transportation Services	56,038.77		96,350.00	152,388.77
561 Tuition To Other School Districts Within the State	8,544.30			8,544.30
566 Tuition To Institutions of Higher Education and Technical Institutes		16,750.00		16,750.00
569 Tuition – Other			18,000.00	18,000.00
Total Other Purchased Services	\$64,583.07	\$16,750.00	\$114,350.00	\$195,683.07
600 <u>Supplies</u>				
610 General Supplies	4,619.75	1,251.38		5,871.13
630 Food	71.94	56.00		127.94
640 Books and Periodicals	4,461.69			4,461.69
Total Supplies	\$9,153.38	\$1,307.38		\$10,460.76
800 <u>Other Objects</u>				
870 Donated Services			3,059.65	3,059.65
Total Other Objects			\$3,059.65	\$3,059.65
Total 1400 Other Instructional Programs – Elementary / Secondary	\$471,069.17	\$417,172.30	\$208,938.65	\$1,097,180.12

LEA : 124157203 Phoenixville Area SD

Printed 12/4/2023 9:37:13 AM

General Fund (10)

1410 Drivers' Education

	<u>Elementary</u>	<u>Secondary</u>	<u>Federal</u>	<u>Total</u>
100 <u>Personnel Services – Salaries</u>				
100 Personnel Services – Salaries		246,622.56		246,622.56
Total Personnel Services – Salaries		\$246,622.56		\$246,622.56
200 <u>Personnel Services – Employee Benefits</u>				
220 Social Security Contributions		17,939.55		17,939.55
230 PSERS Retirement Contributions		86,959.19		86,959.19
270 Group Insurance – Self-Insurance		45,016.02		45,016.02
Total Personnel Services – Employee Benefits		\$149,914.76		\$149,914.76
Total 1410 Drivers' Education		\$396,537.32		\$396,537.32

LEA : 124157203 Phoenixville Area SD

Printed 12/4/2023 9:37:13 AM

General Fund (10)				
1420 Summer School	Elementary	Secondary	Federal	Total
100 <u>Personnel Services – Salaries</u>				
100 Personnel Services – Salaries	212,006.32		91,529.00	303,535.32
Total Personnel Services – Salaries	\$212,006.32		\$91,529.00	\$303,535.32
200 <u>Personnel Services – Employee Benefits</u>				
220 Social Security Contributions	22,874.89			22,874.89
230 PSERS Retirement Contributions	108,509.61			108,509.61
270 Group Insurance – Self-Insurance	2.81			2.81
Total Personnel Services – Employee Benefits	\$131,387.31			\$131,387.31
300 <u>Purchased Professional and Technical Services</u>				
322 Professional Educational Services – lus	21,191.56			21,191.56
330 Other Professional Services	20,503.46			20,503.46
Total Purchased Professional and Technical Services	\$41,695.02			\$41,695.02
500 <u>Other Purchased Services</u>				
510 Student Transportation Services	56,038.77		96,350.00	152,388.77
569 Tuition – Other			18,000.00	18,000.00
Total Other Purchased Services	\$56,038.77		\$114,350.00	\$170,388.77
600 <u>Supplies</u>				
610 General Supplies	4,619.75	1,251.38		5,871.13
630 Food	71.94	56.00		127.94
640 Books and Periodicals	4,461.69			4,461.69
Total Supplies	\$9,153.38	\$1,307.38		\$10,460.76
800 <u>Other Objects</u>				
870 Donated Services			3,059.65	3,059.65
Total Other Objects			\$3,059.65	\$3,059.65
Total 1420 Summer School	\$450,280.80	\$1,307.38	\$208,938.65	\$660,526.83

LEA : 124157203 Phoenixville Area SD

Printed 12/4/2023 9:37:13 AM

General Fund (10)

1440 Alternative Regular Education Programs	<u>Elementary</u>	<u>Secondary</u>	<u>Federal</u>	<u>Total</u>
300 <u>Purchased Professional and Technical Services</u>				
322 Professional Educational Services – lus	12,244.07			12,244.07
Total Purchased Professional and Technical Services	\$12,244.07			\$12,244.07
500 <u>Other Purchased Services</u>				
561 Tuition To Other School Districts Within the State	8,544.30			8,544.30
Total Other Purchased Services	\$8,544.30			\$8,544.30
Total 1440 Alternative Regular Education Programs	\$20,788.37			\$20,788.37

LEA : 124157203 Phoenixville Area SD

Printed 12/4/2023 9:37:13 AM

General Fund (10)

1441 Adjudicated / Court-Placed Programs	<u>Elementary</u>	<u>Secondary</u>	<u>Federal</u>	<u>Total</u>
300 <u>Purchased Professional and Technical Services</u>				
322 Professional Educational Services – lus	12,244.07			12,244.07
Total Purchased Professional and Technical Services	\$12,244.07			\$12,244.07
500 <u>Other Purchased Services</u>				
561 Tuition To Other School Districts Within the State	8,544.30			8,544.30
Total Other Purchased Services	\$8,544.30			\$8,544.30
Total 1441 Adjudicated / Court-Placed Programs	\$20,788.37			\$20,788.37

LEA : 124157203 Phoenixville Area SD

Printed 12/4/2023 9:37:13 AM

General Fund (10)

1490 Additional Other Instructional Programs	<u>Elementary</u>	<u>Secondary</u>	<u>Federal</u>	<u>Total</u>
300 <u>Purchased Professional and Technical Services</u>				
322 Professional Educational Services – lus		2,577.60		2,577.60
Total Purchased Professional and Technical Services		\$2,577.60		\$2,577.60
500 <u>Other Purchased Services</u>				
566 Tuition To Institutions of Higher Education and Technical Institutes		16,750.00		16,750.00
Total Other Purchased Services		\$16,750.00		\$16,750.00
Total 1490 Additional Other Instructional Programs		\$19,327.60		\$19,327.60

LEA : 124157203 Phoenixville Area SD

Printed 12/4/2023 9:37:16 AM

General Fund (10)

2000 Support Services

Total

100	<u>Personnel Services – Salaries</u>	
100	Personnel Services – Salaries	12,356,657.24
Total Personnel Services – Salaries		\$12,356,657.24
200	<u>Personnel Services – Employee Benefits</u>	
210	Group Insurance – Contracted Provider	15,101.94
220	Social Security Contributions	900,802.64
230	PSERS Retirement Contributions	4,357,856.60
240	Tuition Reimbursement	208,044.23
250	Unemployment Compensation	2,429.28
260	Workers' Compensation	176,540.47
270	Group Insurance – Self-Insurance	2,443,861.36
291	Other Retirement Plans	235,807.78
292	Health Savings Accounts	39,624.83
299	All Other Employee Benefits	10,297.65
Total Personnel Services – Employee Benefits		\$8,390,366.78
300	<u>Purchased Professional and Technical Services</u>	
322	Professional Educational Services – Ius	13,461.74
330	Other Professional Services	2,257,863.67
340	Technical Services	12,000.00
350	Security / Safety Services	268,699.77
360	Employee Training and Development Services	165,291.02
Total Purchased Professional and Technical Services		\$2,717,316.20
400	<u>Purchased Property Services</u>	
410	Cleaning Services	80,746.59
420	Utility Services	171,533.64
430	Repairs and Maintenance Services	554,744.46
440	Rentals	424,381.62
460	Extermination Services	17,196.91
490	Other Purchased Property Services	14,443.83
Total Purchased Property Services		\$1,263,047.05
500	<u>Other Purchased Services</u>	
510	Student Transportation Services	268.53
513	Contracted Carriers	4,078,341.72
516	Student Transportation Services From the IU	8,933.11
520	Insurance – General	93.40
529	Other Insurance	241,812.00
530	Communications	166,790.54
541	Advertising Related to Federal Grant Awards	3,603.43
549	Other Advertising/Public Relations	5,223.05
550	Printing and Binding	2,949.27
580	Travel	9,997.79
595	IU Payments By Withholding	36,692.31
599	Other Miscellaneous Purchased Services	175.13
Total Other Purchased Services		\$4,554,880.28

LEA : 124157203 Phoenixville Area SD

Printed 12/4/2023 9:37:16 AM

General Fund (10)

2000 Support Services

Total

600 <u>Supplies</u>	
610 General Supplies	642,724.20
620 Energy	587,713.47
630 Food	27,977.20
640 Books and Periodicals	57,839.35
650 Supplies & Fees – Technology Related	565,669.72
Total Supplies	\$1,881,923.94
700 <u>Property</u>	
738 Technology Software Lease and Other Right-to-Use Arrangements	38,984.21
752 Capital Equipment – Original and Additional	50,173.00
756 Capitalized Technology Equipment – Original	317,490.40
762 Capitalized Equipment - Replacement	79,739.30
766 Capitalized Technology Equipment – Replacement	45,098.22
Total Property	\$531,485.13
800 <u>Other Objects</u>	
810 Dues and Fees	275,679.08
890 Miscellaneous Expenditures	1,040.00
899 Pass-Through Funds	45,058.58
Total Other Objects	\$321,777.66
Total 2000 Support Services	\$32,017,454.28

LEA : 124157203 Phoenixville Area SD

Printed 12/4/2023 9:37:16 AM

General Fund (10)

2100 Support Services – Students

	Elementary	Secondary	Federal	Total
100 <u>Personnel Services – Salaries</u>				
100 Personnel Services – Salaries	1,800,668.03	1,060,015.70		3,088,670.24
Total Personnel Services – Salaries	\$1,800,668.03	\$1,060,015.70		\$3,088,670.24
200 <u>Personnel Services – Employee Benefits</u>				
210 Group Insurance – Contracted Provider	14,223.69			14,614.66
220 Social Security Contributions	131,548.57	77,618.26		226,160.89
230 PSERS Retirement Contributions	632,354.90	369,117.33		1,081,991.13
270 Group Insurance – Self-Insurance	315,142.55	184,088.38		545,638.01
291 Other Retirement Plans	17,987.98			17,987.98
292 Health Savings Accounts	4,875.00	500.00		5,875.00
Total Personnel Services – Employee Benefits	\$1,116,132.69	\$631,323.97		\$1,892,267.67
300 <u>Purchased Professional and Technical Services</u>				
322 Professional Educational Services – Ius	13,461.74			13,461.74
330 Other Professional Services	383,827.33	138,043.76	337,393.27	872,767.53
Total Purchased Professional and Technical Services	\$397,289.07	\$138,043.76	\$337,393.27	\$886,229.27
400 <u>Purchased Property Services</u>				
430 Repairs and Maintenance Services	845.38			845.38
Total Purchased Property Services	\$845.38			\$845.38
500 <u>Other Purchased Services</u>				
510 Student Transportation Services		268.53		268.53
580 Travel	411.96			968.75
Total Other Purchased Services	\$411.96	\$268.53		\$1,237.28
600 <u>Supplies</u>				
610 General Supplies	17,821.12	7,163.80		25,029.46
630 Food		217.64		217.64
640 Books and Periodicals	416.56			416.56
650 Supplies & Fees – Technology Related	19,185.10	4,955.72		24,140.82
Total Supplies	\$37,422.78	\$12,337.16		\$49,804.48
800 <u>Other Objects</u>				
810 Dues and Fees	1,899.88	345.00		2,244.88
890 Miscellaneous Expenditures		1,040.00		1,040.00
Total Other Objects	\$1,899.88	\$1,385.00		\$3,284.88
Total 2100 Support Services – Students	\$3,354,669.79	\$1,843,374.12	\$337,393.27	\$5,922,339.20

LEA : 124157203 Phoenixville Area SD

Printed 12/4/2023 9:37:16 AM

General Fund (10)				
2110 Supervision of Student Services	<u>Elementary</u>	<u>Secondary</u>	<u>Federal</u>	<u>Total</u>
100 <u>Personnel Services – Salaries</u>				
100 Personnel Services – Salaries	613,625.01			613,625.01
Total Personnel Services – Salaries	\$613,625.01			\$613,625.01
200 <u>Personnel Services – Employee Benefits</u>				
220 Social Security Contributions	45,706.11			45,706.11
230 PSERS Retirement Contributions	212,335.36			212,335.36
270 Group Insurance – Self-Insurance	102,416.70			102,416.70
291 Other Retirement Plans	16,870.08			16,870.08
292 Health Savings Accounts	4,000.00			4,000.00
Total Personnel Services – Employee Benefits	\$381,328.25			\$381,328.25
300 <u>Purchased Professional and Technical Services</u>				
330 Other Professional Services	44,413.22			44,413.22
Total Purchased Professional and Technical Services	\$44,413.22			\$44,413.22
400 <u>Purchased Property Services</u>				
430 Repairs and Maintenance Services	553.38			553.38
Total Purchased Property Services	\$553.38			\$553.38
500 <u>Other Purchased Services</u>				
580 Travel	250.84			250.84
Total Other Purchased Services	\$250.84			\$250.84
600 <u>Supplies</u>				
610 General Supplies	3,972.31			3,972.31
650 Supplies & Fees – Technology Related	12,281.85			12,281.85
Total Supplies	\$16,254.16			\$16,254.16
800 <u>Other Objects</u>				
810 Dues and Fees	1,684.88			1,684.88
Total Other Objects	\$1,684.88			\$1,684.88
Total 2110 Supervision of Student Services	\$1,058,109.74			\$1,058,109.74

LEA : 124157203 Phoenixville Area SD

Printed 12/4/2023 9:37:16 AM

General Fund (10)

2111 Supervision of Student Services – Head of Component	<u>Elementary</u>	<u>Secondary</u>	<u>Federal</u>	<u>Total</u>
100 <u>Personnel Services – Salaries</u>				
100 Personnel Services – Salaries	613,625.01			613,625.01
Total Personnel Services – Salaries	\$613,625.01			\$613,625.01
200 <u>Personnel Services – Employee Benefits</u>				
220 Social Security Contributions	45,706.11			45,706.11
230 PSERS Retirement Contributions	212,335.36			212,335.36
270 Group Insurance – Self-Insurance	102,416.70			102,416.70
291 Other Retirement Plans	16,870.08			16,870.08
292 Health Savings Accounts	4,000.00			4,000.00
Total Personnel Services – Employee Benefits	\$381,328.25			\$381,328.25
300 <u>Purchased Professional and Technical Services</u>				
330 Other Professional Services	44,413.22			44,413.22
Total Purchased Professional and Technical Services	\$44,413.22			\$44,413.22
400 <u>Purchased Property Services</u>				
430 Repairs and Maintenance Services	553.38			553.38
Total Purchased Property Services	\$553.38			\$553.38
500 <u>Other Purchased Services</u>				
580 Travel	250.84			250.84
Total Other Purchased Services	\$250.84			\$250.84
600 <u>Supplies</u>				
610 General Supplies	3,972.31			3,972.31
650 Supplies & Fees – Technology Related	12,281.85			12,281.85
Total Supplies	\$16,254.16			\$16,254.16
800 <u>Other Objects</u>				
810 Dues and Fees	1,684.88			1,684.88
Total Other Objects	\$1,684.88			\$1,684.88
Total 2111 Supervision of Student Services – Head of Component	\$1,058,109.74			\$1,058,109.74

LEA : 124157203 Phoenixville Area SD

Printed 12/4/2023 9:37:16 AM

General Fund (10)

2120 Guidance Services	Elementary	Secondary	Federal	Total
100 <u>Personnel Services – Salaries</u>				
100 Personnel Services – Salaries	514,932.12	656,946.46		1,171,878.58
Total Personnel Services – Salaries	\$514,932.12	\$656,946.46		\$1,171,878.58
200 <u>Personnel Services – Employee Benefits</u>				
220 Social Security Contributions	37,940.90	47,921.28		85,862.18
230 PSERS Retirement Contributions	180,154.96	230,498.96		410,653.92
270 Group Insurance – Self-Insurance	104,122.37	123,118.66		227,241.03
Total Personnel Services – Employee Benefits	\$322,218.23	\$401,538.90		\$723,757.13
300 <u>Purchased Professional and Technical Services</u>				
330 Other Professional Services	10,506.04		420.72	10,926.76
Total Purchased Professional and Technical Services	\$10,506.04		\$420.72	\$10,926.76
500 <u>Other Purchased Services</u>				
510 Student Transportation Services		268.53		268.53
Total Other Purchased Services		\$268.53		\$268.53
600 <u>Supplies</u>				
610 General Supplies	1,956.92	5,598.60		7,555.52
630 Food		217.64		217.64
640 Books and Periodicals	416.56			416.56
650 Supplies & Fees – Technology Related	1,860.00			1,860.00
Total Supplies	\$4,233.48	\$5,816.24		\$10,049.72
800 <u>Other Objects</u>				
810 Dues and Fees		345.00		345.00
890 Miscellaneous Expenditures		1,040.00		1,040.00
Total Other Objects		\$1,385.00		\$1,385.00
Total 2120 Guidance Services	\$851,889.87	\$1,065,955.13	\$420.72	\$1,918,265.72

LEA : 124157203 Phoenixville Area SD

Printed 12/4/2023 9:37:16 AM

General Fund (10)				
2130 Attendance Services	<u>Elementary</u>	<u>Secondary</u>	<u>Federal</u>	<u>Total</u>
100 <u>Personnel Services – Salaries</u>				
100 Personnel Services – Salaries				142,177.14
Total Personnel Services – Salaries				\$142,177.14
200 <u>Personnel Services – Employee Benefits</u>				
210 Group Insurance – Contracted Provider				390.97
220 Social Security Contributions				10,669.62
230 PSERS Retirement Contributions				50,262.50
270 Group Insurance – Self-Insurance				9,555.48
Total Personnel Services – Employee Benefits				\$70,878.57
300 <u>Purchased Professional and Technical Services</u>				
330 Other Professional Services				4,600.00
Total Purchased Professional and Technical Services				\$4,600.00
500 <u>Other Purchased Services</u>				
580 Travel				556.79
Total Other Purchased Services				\$556.79
600 <u>Supplies</u>				
610 General Supplies				44.54
Total Supplies				\$44.54
Total 2130 Attendance Services				\$218,257.04

LEA : 124157203 Phoenixville Area SD

Printed 12/4/2023 9:37:16 AM

General Fund (10)				
2140 Psychological Services				
	<u>Elementary</u>	<u>Secondary</u>	<u>Federal</u>	<u>Total</u>
100 <u>Personnel Services – Salaries</u>				
100 Personnel Services – Salaries	232,955.61	145,514.26		378,469.87
Total Personnel Services – Salaries	\$232,955.61	\$145,514.26		\$378,469.87
200 <u>Personnel Services – Employee Benefits</u>				
220 Social Security Contributions	16,348.27	10,846.89		27,195.16
230 PSERS Retirement Contributions	83,086.97	47,949.99		131,036.96
270 Group Insurance – Self-Insurance	59,480.16	8,799.56		68,279.72
Total Personnel Services – Employee Benefits	\$158,915.40	\$67,596.44		\$226,511.84
300 <u>Purchased Professional and Technical Services</u>				
322 Professional Educational Services – lus	13,461.74			13,461.74
330 Other Professional Services	105,299.18	30,452.50	261,797.43	397,549.11
Total Purchased Professional and Technical Services	\$118,760.92	\$30,452.50	\$261,797.43	\$411,010.85
500 <u>Other Purchased Services</u>				
580 Travel	22.50			22.50
Total Other Purchased Services	\$22.50			\$22.50
600 <u>Supplies</u>				
610 General Supplies	9,970.83	1,134.00		11,104.83
650 Supplies & Fees – Technology Related	3,940.50	4,813.82		8,754.32
Total Supplies	\$13,911.33	\$5,947.82		\$19,859.15
Total 2140 Psychological Services	\$524,565.76	\$249,511.02	\$261,797.43	\$1,035,874.21

LEA : 124157203 Phoenixville Area SD

Printed 12/4/2023 9:37:16 AM

General Fund (10)				
2150 Speech Pathology and Audiology Services	<u>Elementary</u>	<u>Secondary</u>	<u>Federal</u>	<u>Total</u>
100 <u>Personnel Services – Salaries</u>				
100 Personnel Services – Salaries	292,073.80	125,277.93		417,351.73
Total Personnel Services – Salaries	\$292,073.80	\$125,277.93		\$417,351.73
200 <u>Personnel Services – Employee Benefits</u>				
210 Group Insurance – Contracted Provider	14,223.69			14,223.69
220 Social Security Contributions	20,575.95	9,098.89		29,674.84
230 PSERS Retirement Contributions	104,954.83	43,661.69		148,616.52
270 Group Insurance – Self-Insurance	37,698.33	14,684.18		52,382.51
Total Personnel Services – Employee Benefits	\$177,452.80	\$67,444.76		\$244,897.56
300 <u>Purchased Professional and Technical Services</u>				
330 Other Professional Services	155,119.46	107,591.26	48,161.53	310,872.25
Total Purchased Professional and Technical Services	\$155,119.46	\$107,591.26	\$48,161.53	\$310,872.25
400 <u>Purchased Property Services</u>				
430 Repairs and Maintenance Services	292.00			292.00
Total Purchased Property Services	\$292.00			\$292.00
600 <u>Supplies</u>				
610 General Supplies	1,921.06	431.20		2,352.26
650 Supplies & Fees – Technology Related	1,102.75	141.90		1,244.65
Total Supplies	\$3,023.81	\$573.10		\$3,596.91
Total 2150 Speech Pathology and Audiology Services	\$627,961.87	\$300,887.05	\$48,161.53	\$977,010.45

LEA : 124157203 Phoenixville Area SD

Printed 12/4/2023 9:37:16 AM

General Fund (10)

2160 Social Work Services

<u>Elementary</u>	<u>Secondary</u>	<u>Federal</u>	<u>Total</u>
-------------------	------------------	----------------	--------------

300 Purchased Professional and Technical Services

330 Other Professional Services		1,731.72	10,634.89
---------------------------------	--	----------	-----------

Total Purchased Professional and Technical Services		\$1,731.72	\$10,634.89
Total 2160 Social Work Services		\$1,731.72	\$10,634.89

LEA : 124157203 Phoenixville Area SD

Printed 12/4/2023 9:37:16 AM

General Fund (10)

2170 Student Accounting Services	<u>Elementary</u>	<u>Secondary</u>	<u>Federal</u>	<u>Total</u>
100 <u>Personnel Services – Salaries</u>				
100 Personnel Services – Salaries				85,809.37
Total Personnel Services – Salaries				\$85,809.37
200 <u>Personnel Services – Employee Benefits</u>				
220 Social Security Contributions				6,324.44
230 PSERS Retirement Contributions				30,256.40
270 Group Insurance – Self-Insurance				36,851.60
292 Health Savings Accounts				500.00
Total Personnel Services – Employee Benefits				\$73,932.44
Total 2170 Student Accounting Services				\$159,741.81

LEA : 124157203 Phoenixville Area SD

Printed 12/4/2023 9:37:16 AM

General Fund (10)

2190 Other Student Services	Elementary	Secondary	Federal	Total
100 <u>Personnel Services – Salaries</u>				
100 Personnel Services – Salaries	147,081.49	132,277.05		279,358.54
Total Personnel Services – Salaries	\$147,081.49	\$132,277.05		\$279,358.54
200 <u>Personnel Services – Employee Benefits</u>				
220 Social Security Contributions	10,977.34	9,751.20		20,728.54
230 PSERS Retirement Contributions	51,822.78	47,006.69		98,829.47
270 Group Insurance – Self-Insurance	11,424.99	37,485.98		48,910.97
291 Other Retirement Plans	1,117.90			1,117.90
292 Health Savings Accounts	875.00	500.00		1,375.00
Total Personnel Services – Employee Benefits	\$76,218.01	\$94,743.87		\$170,961.88
300 <u>Purchased Professional and Technical Services</u>				
330 Other Professional Services	68,489.43		25,281.87	93,771.30
Total Purchased Professional and Technical Services	\$68,489.43		\$25,281.87	\$93,771.30
500 <u>Other Purchased Services</u>				
580 Travel	138.62			138.62
Total Other Purchased Services	\$138.62			\$138.62
800 <u>Other Objects</u>				
810 Dues and Fees	215.00			215.00
Total Other Objects	\$215.00			\$215.00
Total 2190 Other Student Services	\$292,142.55	\$227,020.92	\$25,281.87	\$544,445.34

LEA : 124157203 Phoenixville Area SD

Printed 12/4/2023 9:37:16 AM

General Fund (10)

2200 Support Services – Instructional Staff	<u>Elementary</u>	<u>Secondary</u>	<u>Federal</u>	<u>Total</u>
100 <u>Personnel Services – Salaries</u>				
100 Personnel Services – Salaries	976,142.23	169,103.80	255,391.05	1,400,637.08
Total Personnel Services – Salaries	\$976,142.23	\$169,103.80	\$255,391.05	\$1,400,637.08
200 <u>Personnel Services – Employee Benefits</u>				
210 Group Insurance – Contracted Provider	81.06		(81.06)	
220 Social Security Contributions	85,290.41	12,260.42	5,697.34	103,248.17
230 PSERS Retirement Contributions	407,425.80	56,885.33	28,704.00	493,015.13
240 Tuition Reimbursement	116,513.21	80,947.92		197,461.13
270 Group Insurance – Self-Insurance	154,871.09	37,274.49	33,200.79	225,346.37
291 Other Retirement Plans	7,600.07			7,600.07
292 Health Savings Accounts	1,999.13	167.50		2,166.63
Total Personnel Services – Employee Benefits	\$773,780.77	\$187,535.66	\$67,521.07	\$1,028,837.50
300 <u>Purchased Professional and Technical Services</u>				
330 Other Professional Services		2,301.00	95,442.00	97,743.00
360 Employee Training and Development Services	7,441.13	3,848.70	30,198.85	41,488.68
Total Purchased Professional and Technical Services	\$7,441.13	\$6,149.70	\$125,640.85	\$139,231.68
400 <u>Purchased Property Services</u>				
430 Repairs and Maintenance Services	148.87			148.87
Total Purchased Property Services	\$148.87			\$148.87
500 <u>Other Purchased Services</u>				
520 Insurance – General	93.40			93.40
580 Travel	402.17	459.15		861.32
Total Other Purchased Services	\$495.57	\$459.15		\$954.72
600 <u>Supplies</u>				
610 General Supplies	1,441.43	6,265.74	1,229.74	8,936.91
630 Food	1,626.50			1,626.50
640 Books and Periodicals	39,834.57	13,328.87	3,672.03	56,835.47
650 Supplies & Fees – Technology Related	57,498.79	49,294.26	20,921.46	127,714.51
Total Supplies	\$100,401.29	\$68,888.87	\$25,823.23	\$195,113.39
700 <u>Property</u>				
766 Capitalized Technology Equipment – Replacement		45,098.22		45,098.22
Total Property		\$45,098.22		\$45,098.22
800 <u>Other Objects</u>				
810 Dues and Fees	1,573.00			1,573.00
Total Other Objects	\$1,573.00			\$1,573.00
Total 2200 Support Services – Instructional Staff	\$1,859,982.86	\$477,235.40	\$474,376.20	\$2,811,594.46

LEA : 124157203 Phoenixville Area SD

Printed 12/4/2023 9:37:16 AM

General Fund (10)				
2230 Educational Television Services	<u>Elementary</u>	<u>Secondary</u>	<u>Federal</u>	<u>Total</u>
100 <u>Personnel Services – Salaries</u>				
100 Personnel Services – Salaries	119,531.95			119,531.95
Total Personnel Services – Salaries	\$119,531.95			\$119,531.95
200 <u>Personnel Services – Employee Benefits</u>				
220 Social Security Contributions	9,080.93			9,080.93
230 PSERS Retirement Contributions	42,005.89			42,005.89
270 Group Insurance – Self-Insurance	19,374.00			19,374.00
Total Personnel Services – Employee Benefits	\$70,460.82			\$70,460.82
300 <u>Purchased Professional and Technical Services</u>				
330 Other Professional Services		2,301.00		2,301.00
Total Purchased Professional and Technical Services		\$2,301.00		\$2,301.00
600 <u>Supplies</u>				
610 General Supplies		4,910.69		4,910.69
650 Supplies & Fees – Technology Related		29,140.46		29,140.46
Total Supplies		\$34,051.15		\$34,051.15
700 <u>Property</u>				
766 Capitalized Technology Equipment – Replacement		45,098.22		45,098.22
Total Property		\$45,098.22		\$45,098.22
Total 2230 Educational Television Services	\$189,992.77	\$81,450.37		\$271,443.14

LEA : 124157203 Phoenixville Area SD

Printed 12/4/2023 9:37:16 AM

General Fund (10)

2250 School Library Services	<u>Elementary</u>	<u>Secondary</u>	<u>Federal</u>	<u>Total</u>
100 <u>Personnel Services – Salaries</u>				
100 Personnel Services – Salaries	288,503.25	148,859.20		437,362.45
Total Personnel Services – Salaries	\$288,503.25	\$148,859.20		\$437,362.45
200 <u>Personnel Services – Employee Benefits</u>				
220 Social Security Contributions	21,687.29	10,762.39		32,449.68
230 PSERS Retirement Contributions	104,274.49	49,747.09		154,021.58
270 Group Insurance – Self-Insurance	16,891.55	37,274.49		54,166.04
292 Health Savings Accounts	82.50	167.50		250.00
Total Personnel Services – Employee Benefits	\$142,935.83	\$97,951.47		\$240,887.30
600 <u>Supplies</u>				
610 General Supplies	413.41	1,326.21		1,739.62
640 Books and Periodicals	38,151.75	13,328.87	31.02	51,511.64
650 Supplies & Fees – Technology Related	3,357.70	20,153.80		23,511.50
Total Supplies	\$41,922.86	\$34,808.88	\$31.02	\$76,762.76
Total 2250 School Library Services	\$473,361.94	\$281,619.55	\$31.02	\$755,012.51

LEA : 124157203 Phoenixville Area SD

Printed 12/4/2023 9:37:16 AM

General Fund (10)

2260 Instruction and Curriculum Development Services	<u>Elementary</u>	<u>Secondary</u>	<u>Federal</u>	<u>Total</u>
100 <u>Personnel Services – Salaries</u>				
100 Personnel Services – Salaries	536,291.83		255,391.05	791,682.88
Total Personnel Services – Salaries	\$536,291.83		\$255,391.05	\$791,682.88
200 <u>Personnel Services – Employee Benefits</u>				
210 Group Insurance – Contracted Provider	81.06		(81.06)	
220 Social Security Contributions	52,201.23		5,697.34	57,898.57
230 PSERS Retirement Contributions	249,876.76		28,704.00	278,580.76
270 Group Insurance – Self-Insurance	118,605.54		33,200.79	151,806.33
291 Other Retirement Plans	7,600.07			7,600.07
292 Health Savings Accounts	1,916.63			1,916.63
Total Personnel Services – Employee Benefits	\$430,281.29		\$67,521.07	\$497,802.36
300 <u>Purchased Professional and Technical Services</u>				
330 Other Professional Services			94,550.00	94,550.00
Total Purchased Professional and Technical Services			\$94,550.00	\$94,550.00
400 <u>Purchased Property Services</u>				
430 Repairs and Maintenance Services	148.87			148.87
Total Purchased Property Services	\$148.87			\$148.87
500 <u>Other Purchased Services</u>				
520 Insurance – General	93.40			93.40
580 Travel	172.60			172.60
Total Other Purchased Services	\$266.00			\$266.00
600 <u>Supplies</u>				
610 General Supplies	989.00			989.00
630 Food	1,626.50			1,626.50
640 Books and Periodicals	1,048.04		573.65	1,621.69
650 Supplies & Fees – Technology Related	54,141.09		20,921.46	75,062.55
Total Supplies	\$57,804.63		\$21,495.11	\$79,299.74
800 <u>Other Objects</u>				
810 Dues and Fees	1,573.00			1,573.00
Total Other Objects	\$1,573.00			\$1,573.00
Total 2260 Instruction and Curriculum Development Services	\$1,026,365.62		\$438,957.23	\$1,465,322.85

LEA : 124157203 Phoenixville Area SD

Printed 12/4/2023 9:37:16 AM

General Fund (10)				
2270 Instructional Staff Professional Development Services	<u>Elementary</u>	<u>Secondary</u>	<u>Federal</u>	<u>Total</u>
100 <u>Personnel Services – Salaries</u>				
100 Personnel Services – Salaries	31,815.20	20,244.60		52,059.80
Total Personnel Services – Salaries	\$31,815.20	\$20,244.60		\$52,059.80
200 <u>Personnel Services – Employee Benefits</u>				
220 Social Security Contributions	2,320.96	1,498.03		3,818.99
230 PSERS Retirement Contributions	11,268.66	7,138.24		18,406.90
240 Tuition Reimbursement	116,513.21	80,947.92		197,461.13
Total Personnel Services – Employee Benefits	\$130,102.83	\$89,584.19		\$219,687.02
300 <u>Purchased Professional and Technical Services</u>				
360 Employee Training and Development Services	7,441.13	3,848.70	29,081.85	40,371.68
Total Purchased Professional and Technical Services	\$7,441.13	\$3,848.70	\$29,081.85	\$40,371.68
500 <u>Other Purchased Services</u>				
580 Travel	229.57	459.15		688.72
Total Other Purchased Services	\$229.57	\$459.15		\$688.72
600 <u>Supplies</u>				
610 General Supplies	39.02	28.84		67.86
640 Books and Periodicals	634.78		3,067.36	3,702.14
Total Supplies	\$673.80	\$28.84	\$3,067.36	\$3,770.00
Total 2270 Instructional Staff Professional Development Services	\$170,262.53	\$114,165.48	\$32,149.21	\$316,577.22

LEA : 124157203 Phoenixville Area SD

Printed 12/4/2023 9:37:16 AM

General Fund (10)				
2280 Nonpublic Support Services	<u>Elementary</u>	<u>Secondary</u>	<u>Federal</u>	<u>Total</u>
300 <u>Purchased Professional and Technical Services</u>				
330 Other Professional Services			892.00	892.00
360 Employee Training and Development Services			1,117.00	1,117.00
Total Purchased Professional and Technical Services			\$2,009.00	\$2,009.00
600 <u>Supplies</u>				
610 General Supplies			1,229.74	1,229.74
Total Supplies			\$1,229.74	\$1,229.74
Total 2280 Nonpublic Support Services			\$3,238.74	\$3,238.74

LEA : 124157203 Phoenixville Area SD

Printed 12/4/2023 9:37:16 AM

General Fund (10)

2300 Support Services – Administration	Elementary	Secondary	Federal	Total
100 <u>Personnel Services – Salaries</u>				
100 Personnel Services – Salaries	1,057,146.46	1,060,067.20		2,985,033.93
Total Personnel Services – Salaries	\$1,057,146.46	\$1,060,067.20		\$2,985,033.93
200 <u>Personnel Services – Employee Benefits</u>				
220 Social Security Contributions	78,879.02	77,656.15		211,289.40
230 PSERS Retirement Contributions	367,765.83	373,884.32		1,043,560.59
270 Group Insurance – Self-Insurance	150,443.47	183,184.16		477,701.19
291 Other Retirement Plans	21,230.89	20,992.15		130,687.02
292 Health Savings Accounts	5,683.29	6,233.31		17,416.60
299 All Other Employee Benefits				10,297.65
Total Personnel Services – Employee Benefits	\$624,002.50	\$661,950.09		\$1,890,952.45
300 <u>Purchased Professional and Technical Services</u>				
330 Other Professional Services	11,871.32	25,235.97	12,000.00	479,677.05
350 Security / Safety Services				2,871.00
Total Purchased Professional and Technical Services	\$11,871.32	\$25,235.97	\$12,000.00	\$482,548.05
400 <u>Purchased Property Services</u>				
440 Rentals		620.00		620.00
Total Purchased Property Services		\$620.00		\$620.00
500 <u>Other Purchased Services</u>				
530 Communications	500.00			3,882.11
541 Advertising Related to Federal Grant Awards				3,603.43
549 Other Advertising/Public Relations				5,223.05
550 Printing and Binding	350.00	1,898.32		2,920.65
580 Travel				3,044.98
599 Other Miscellaneous Purchased Services				175.13
Total Other Purchased Services	\$850.00	\$1,898.32		\$18,849.35
600 <u>Supplies</u>				
610 General Supplies	4,725.04	13,110.59		36,453.26
630 Food	111.45	1,402.30	759.94	24,996.86
640 Books and Periodicals				59.95
650 Supplies & Fees – Technology Related	5,528.00	136.37		19,723.65
Total Supplies	\$10,364.49	\$14,649.26	\$759.94	\$81,233.72
700 <u>Property</u>				
752 Capital Equipment – Original and Additional		6,332.00		6,332.00
Total Property		\$6,332.00		\$6,332.00
800 <u>Other Objects</u>				
810 Dues and Fees	968.00	2,057.00		249,216.16
Total Other Objects	\$968.00	\$2,057.00		\$249,216.16
Total 2300 Support Services – Administration	\$1,705,202.77	\$1,772,809.84	\$12,759.94	\$5,714,785.66

LEA : 124157203 Phoenixville Area SD

Printed 12/4/2023 9:37:16 AM

General Fund (10)				
2310 Board Services				
	<u>Elementary</u>	<u>Secondary</u>	<u>Federal</u>	<u>Total</u>
100 <u>Personnel Services – Salaries</u>				
100 Personnel Services – Salaries				3,400.00
Total Personnel Services – Salaries				\$3,400.00
200 <u>Personnel Services – Employee Benefits</u>				
220 Social Security Contributions				253.74
230 PSERS Retirement Contributions				1,198.84
Total Personnel Services – Employee Benefits				\$1,452.58
300 <u>Purchased Professional and Technical Services</u>				
330 Other Professional Services				14,366.79
350 Security / Safety Services				2,871.00
Total Purchased Professional and Technical Services				\$17,237.79
500 <u>Other Purchased Services</u>				
541 Advertising Related to Federal Grant Awards				3,603.43
550 Printing and Binding				672.33
Total Other Purchased Services				\$4,275.76
600 <u>Supplies</u>				
610 General Supplies				2,166.25
630 Food				1,331.04
650 Supplies & Fees – Technology Related				(1,125.00)
Total Supplies				\$2,372.29
Total 2310 Board Services				\$28,738.42

LEA : 124157203 Phoenixville Area SD

Printed 12/4/2023 9:37:16 AM

General Fund (10)

2330 Tax Assessment and Collection Services	<u>Elementary</u>	<u>Secondary</u>	<u>Federal</u>	<u>Total</u>
300 <u>Purchased Professional and Technical Services</u>				
330 Other Professional Services				28,794.20
Total Purchased Professional and Technical Services				\$28,794.20
500 <u>Other Purchased Services</u>				
530 Communications				3,382.11
Total Other Purchased Services				\$3,382.11
800 <u>Other Objects</u>				
810 Dues and Fees				183,045.06
Total Other Objects				\$183,045.06
Total 2330 Tax Assessment and Collection Services				\$215,221.37

LEA : 124157203 Phoenixville Area SD

Printed 12/4/2023 9:37:16 AM

General Fund (10)				
2350 Legal and Accounting Services	<u>Elementary</u>	<u>Secondary</u>	<u>Federal</u>	<u>Total</u>
300 <u>Purchased Professional and Technical Services</u>				
330 Other Professional Services				377,622.41
Total Purchased Professional and Technical Services				\$377,622.41
Total 2350 Legal and Accounting Services				\$377,622.41

LEA : 124157203 Phoenixville Area SD

Printed 12/4/2023 9:37:16 AM

General Fund (10)				
2360 Office of the Superintendent / Executive Director Services	<u>Elementary</u>	<u>Secondary</u>	<u>Federal</u>	<u>Total</u>
100 <u>Personnel Services – Salaries</u>				
100 Personnel Services – Salaries				701,673.88
Total Personnel Services – Salaries				\$701,673.88
200 <u>Personnel Services – Employee Benefits</u>				
220 Social Security Contributions				42,205.20
230 PSERS Retirement Contributions				243,872.81
270 Group Insurance – Self-Insurance				96,772.20
291 Other Retirement Plans				82,747.43
292 Health Savings Accounts				4,500.00
299 All Other Employee Benefits				10,297.65
Total Personnel Services – Employee Benefits				\$480,395.29
300 <u>Purchased Professional and Technical Services</u>				
330 Other Professional Services			12,000.00	21,786.36
Total Purchased Professional and Technical Services			\$12,000.00	\$21,786.36
500 <u>Other Purchased Services</u>				
530 Communications	500.00			500.00
549 Other Advertising/Public Relations				75.00
580 Travel				1,801.82
599 Other Miscellaneous Purchased Services				175.13
Total Other Purchased Services	\$500.00			\$2,551.95
600 <u>Supplies</u>				
610 General Supplies				5,585.98
630 Food				21,392.13
640 Books and Periodicals				59.95
650 Supplies & Fees – Technology Related				7,212.99
Total Supplies				\$34,251.05
800 <u>Other Objects</u>				
810 Dues and Fees				55,642.60
Total Other Objects				\$55,642.60
Total 2360 Office of the Superintendent / Executive Director Services	\$500.00		\$12,000.00	\$1,296,301.13

LEA : 124157203 Phoenixville Area SD

Printed 12/4/2023 9:37:16 AM

General Fund (10)				
2370 Community Relations Services	<u>Elementary</u>	<u>Secondary</u>	<u>Federal</u>	<u>Total</u>
100 <u>Personnel Services – Salaries</u>				
100 Personnel Services – Salaries				162,746.39
Total Personnel Services – Salaries				\$162,746.39
200 <u>Personnel Services – Employee Benefits</u>				
220 Social Security Contributions				12,295.29
230 PSERS Retirement Contributions				56,838.79
270 Group Insurance – Self-Insurance				47,301.36
291 Other Retirement Plans				5,716.55
292 Health Savings Accounts				1,000.00
Total Personnel Services – Employee Benefits				\$123,151.99
500 <u>Other Purchased Services</u>				
549 Other Advertising/Public Relations				5,148.05
580 Travel				1,243.16
Total Other Purchased Services				\$6,391.21
600 <u>Supplies</u>				
610 General Supplies				10,865.40
630 Food			759.94	759.94
650 Supplies & Fees – Technology Related				7,971.29
Total Supplies			\$759.94	\$19,596.63
800 <u>Other Objects</u>				
810 Dues and Fees				725.50
Total Other Objects				\$725.50
Total 2370 Community Relations Services			\$759.94	\$312,611.72

LEA : 124157203 Phoenixville Area SD

Printed 12/4/2023 9:37:16 AM

General Fund (10)

2380 Office of the Principal Services	Elementary	Secondary	Federal	Total
100 <u>Personnel Services – Salaries</u>				
100 Personnel Services – Salaries	1,057,146.46	1,060,067.20		2,117,213.66
Total Personnel Services – Salaries	\$1,057,146.46	\$1,060,067.20		\$2,117,213.66
200 <u>Personnel Services – Employee Benefits</u>				
220 Social Security Contributions	78,879.02	77,656.15		156,535.17
230 PSERS Retirement Contributions	367,765.83	373,884.32		741,650.15
270 Group Insurance – Self-Insurance	150,443.47	183,184.16		333,627.63
291 Other Retirement Plans	21,230.89	20,992.15		42,223.04
292 Health Savings Accounts	5,683.29	6,233.31		11,916.60
Total Personnel Services – Employee Benefits	\$624,002.50	\$661,950.09		\$1,285,952.59
300 <u>Purchased Professional and Technical Services</u>				
330 Other Professional Services	11,871.32	25,235.97		37,107.29
Total Purchased Professional and Technical Services	\$11,871.32	\$25,235.97		\$37,107.29
400 <u>Purchased Property Services</u>				
440 Rentals		620.00		620.00
Total Purchased Property Services		\$620.00		\$620.00
500 <u>Other Purchased Services</u>				
550 Printing and Binding	350.00	1,898.32		2,248.32
Total Other Purchased Services	\$350.00	\$1,898.32		\$2,248.32
600 <u>Supplies</u>				
610 General Supplies	4,725.04	13,110.59		17,835.63
630 Food	111.45	1,402.30		1,513.75
650 Supplies & Fees – Technology Related	5,528.00	136.37		5,664.37
Total Supplies	\$10,364.49	\$14,649.26		\$25,013.75
700 <u>Property</u>				
752 Capital Equipment – Original and Additional		6,332.00		6,332.00
Total Property		\$6,332.00		\$6,332.00
800 <u>Other Objects</u>				
810 Dues and Fees	968.00	2,057.00		3,025.00
Total Other Objects	\$968.00	\$2,057.00		\$3,025.00
Total 2380 Office of the Principal Services	\$1,704,702.77	\$1,772,809.84		\$3,477,512.61

LEA : 124157203 Phoenixville Area SD

Printed 12/4/2023 9:37:16 AM

General Fund (10)

2390 Other Administration Services	<u>Elementary</u>	<u>Secondary</u>	<u>Federal</u>	<u>Total</u>
800 <u>Other Objects</u>				
810 Dues and Fees				6,778.00
Total Other Objects				\$6,778.00
Total 2390 Other Administration Services				\$6,778.00

LEA : 124157203 Phoenixville Area SD

Printed 12/4/2023 9:37:16 AM

General Fund (10)

2400 Support Services – Pupil Health	<u>Elementary</u>	<u>Secondary</u>	<u>Federal</u>	<u>Total</u>
100 <u>Personnel Services – Salaries</u>				
100 Personnel Services – Salaries				749,603.46
Total Personnel Services – Salaries				\$749,603.46
200 <u>Personnel Services – Employee Benefits</u>				
220 Social Security Contributions				55,507.29
230 PSERS Retirement Contributions				263,377.31
270 Group Insurance – Self-Insurance				122,551.59
291 Other Retirement Plans				1,350.39
292 Health Savings Accounts				1,416.60
Total Personnel Services – Employee Benefits				\$444,203.18
300 <u>Purchased Professional and Technical Services</u>				
330 Other Professional Services				458,452.50
Total Purchased Professional and Technical Services				\$458,452.50
500 <u>Other Purchased Services</u>				
550 Printing and Binding				28.62
580 Travel				50.00
Total Other Purchased Services				\$78.62
600 <u>Supplies</u>				
610 General Supplies				18,330.64
Total Supplies				\$18,330.64
Total 2400 Support Services – Pupil Health				\$1,670,668.40

LEA : 124157203 Phoenixville Area SD

Printed 12/4/2023 9:37:16 AM

General Fund (10)

2420 Medical Services

Elementary Secondary Federal Total

100 <u>Personnel Services – Salaries</u>				
100 Personnel Services – Salaries				274,586.97
Total Personnel Services – Salaries				\$274,586.97
200 <u>Personnel Services – Employee Benefits</u>				
220 Social Security Contributions				20,191.49
230 PSERS Retirement Contributions				97,121.24
270 Group Insurance – Self-Insurance				57,308.46
291 Other Retirement Plans				1,350.39
292 Health Savings Accounts				1,416.60
Total Personnel Services – Employee Benefits				\$177,388.18
300 <u>Purchased Professional and Technical Services</u>				
330 Other Professional Services				422,866.30
Total Purchased Professional and Technical Services				\$422,866.30
600 <u>Supplies</u>				
610 General Supplies				3,393.06
Total Supplies				\$3,393.06
Total 2420 Medical Services				\$878,234.51

LEA : 124157203 Phoenixville Area SD

Printed 12/4/2023 9:37:16 AM

General Fund (10)

2440 Nursing Services

Elementary Secondary Federal Total

100 <u>Personnel Services – Salaries</u>				
100 Personnel Services – Salaries				475,016.49
Total Personnel Services – Salaries				\$475,016.49
200 <u>Personnel Services – Employee Benefits</u>				
220 Social Security Contributions				35,315.80
230 PSERS Retirement Contributions				166,256.07
270 Group Insurance – Self-Insurance				65,243.13
Total Personnel Services – Employee Benefits				\$266,815.00
300 <u>Purchased Professional and Technical Services</u>				
330 Other Professional Services				35,586.20
Total Purchased Professional and Technical Services				\$35,586.20
500 <u>Other Purchased Services</u>				
550 Printing and Binding				28.62
580 Travel				50.00
Total Other Purchased Services				\$78.62
600 <u>Supplies</u>				
610 General Supplies				14,937.58
Total Supplies				\$14,937.58
Total 2440 Nursing Services				\$792,433.89

LEA : 124157203 Phoenixville Area SD

Printed 12/4/2023 9:37:16 AM

General Fund (10)				
2500 Support Services – Business	<u>Elementary</u>	<u>Secondary</u>	<u>Federal</u>	<u>Total</u>
100 <u>Personnel Services – Salaries</u>				
100 Personnel Services – Salaries				578,868.20
Total Personnel Services – Salaries				\$578,868.20
200 <u>Personnel Services – Employee Benefits</u>				
220 Social Security Contributions				43,637.04
230 PSERS Retirement Contributions				218,758.01
270 Group Insurance – Self-Insurance				128,860.76
291 Other Retirement Plans				17,452.35
292 Health Savings Accounts				4,000.00
Total Personnel Services – Employee Benefits				\$412,708.16
300 <u>Purchased Professional and Technical Services</u>				
330 Other Professional Services				113,233.60
Total Purchased Professional and Technical Services				\$113,233.60
400 <u>Purchased Property Services</u>				
430 Repairs and Maintenance Services				63.48
440 Rentals				3,743.88
Total Purchased Property Services				\$3,807.36
500 <u>Other Purchased Services</u>				
530 Communications				19,861.82
580 Travel				2,373.11
Total Other Purchased Services				\$22,234.93
600 <u>Supplies</u>				
610 General Supplies				6,750.97
650 Supplies & Fees – Technology Related				9,658.38
Total Supplies				\$16,409.35
700 <u>Property</u>				
752 Capital Equipment – Original and Additional				6,332.00
756 Capitalized Technology Equipment – Original				13,357.61
Total Property				\$19,689.61
800 <u>Other Objects</u>				
810 Dues and Fees				11,486.17
Total Other Objects				\$11,486.17
Total 2500 Support Services – Business				\$1,178,437.38

LEA : 124157203 Phoenixville Area SD

Printed 12/4/2023 9:37:16 AM

General Fund (10)				
2510 Fiscal Services	<u>Elementary</u>	<u>Secondary</u>	<u>Federal</u>	<u>Total</u>
100 <u>Personnel Services – Salaries</u>				
100 Personnel Services – Salaries				578,868.20
Total Personnel Services – Salaries				\$578,868.20
200 <u>Personnel Services – Employee Benefits</u>				
220 Social Security Contributions				43,637.04
230 PSERS Retirement Contributions				218,758.01
270 Group Insurance – Self-Insurance				128,860.76
291 Other Retirement Plans				17,452.35
292 Health Savings Accounts				4,000.00
Total Personnel Services – Employee Benefits				\$412,708.16
300 <u>Purchased Professional and Technical Services</u>				
330 Other Professional Services				113,233.60
Total Purchased Professional and Technical Services				\$113,233.60
400 <u>Purchased Property Services</u>				
430 Repairs and Maintenance Services				63.48
440 Rentals				3,743.88
Total Purchased Property Services				\$3,807.36
500 <u>Other Purchased Services</u>				
530 Communications				19,861.82
580 Travel				2,373.11
Total Other Purchased Services				\$22,234.93
600 <u>Supplies</u>				
610 General Supplies				6,750.97
650 Supplies & Fees – Technology Related				9,658.38
Total Supplies				\$16,409.35
700 <u>Property</u>				
752 Capital Equipment – Original and Additional				6,332.00
756 Capitalized Technology Equipment – Original				13,357.61
Total Property				\$19,689.61
800 <u>Other Objects</u>				
810 Dues and Fees				11,486.17
Total Other Objects				\$11,486.17
Total 2510 Fiscal Services				\$1,178,437.38

LEA : 124157203 Phoenixville Area SD

Printed 12/4/2023 9:37:16 AM

General Fund (10)				
2511 Supervision of Fiscal Services - Head of Component	<u>Elementary</u>	<u>Secondary</u>	<u>Federal</u>	<u>Total</u>
100 <u>Personnel Services – Salaries</u>				
100 Personnel Services – Salaries				462,451.28
Total Personnel Services – Salaries				\$462,451.28
200 <u>Personnel Services – Employee Benefits</u>				
220 Social Security Contributions				35,118.42
230 PSERS Retirement Contributions				176,681.23
270 Group Insurance – Self-Insurance				84,579.96
291 Other Retirement Plans				16,767.39
292 Health Savings Accounts				3,500.00
Total Personnel Services – Employee Benefits				\$316,647.00
300 <u>Purchased Professional and Technical Services</u>				
330 Other Professional Services				113,233.60
Total Purchased Professional and Technical Services				\$113,233.60
400 <u>Purchased Property Services</u>				
430 Repairs and Maintenance Services				63.48
440 Rentals				3,743.88
Total Purchased Property Services				\$3,807.36
500 <u>Other Purchased Services</u>				
530 Communications				19,861.82
580 Travel				2,373.11
Total Other Purchased Services				\$22,234.93
600 <u>Supplies</u>				
610 General Supplies				6,055.77
650 Supplies & Fees – Technology Related				9,658.38
Total Supplies				\$15,714.15
700 <u>Property</u>				
752 Capital Equipment – Original and Additional				6,332.00
756 Capitalized Technology Equipment – Original				13,357.61
Total Property				\$19,689.61
800 <u>Other Objects</u>				
810 Dues and Fees				11,486.17
Total Other Objects				\$11,486.17
Total 2511 Supervision of Fiscal Services - Head of Component				\$965,264.10

LEA : 124157203 Phoenixville Area SD

Printed 12/4/2023 9:37:16 AM

General Fund (10)

2513 Receiving and Disbursing Funds Services	<u>Elementary</u>	<u>Secondary</u>	<u>Federal</u>	<u>Total</u>
100 <u>Personnel Services – Salaries</u>				
100 Personnel Services – Salaries				48,450.74
Total Personnel Services – Salaries				\$48,450.74
200 <u>Personnel Services – Employee Benefits</u>				
220 Social Security Contributions				3,460.08
230 PSERS Retirement Contributions				18,111.90
270 Group Insurance – Self-Insurance				19,774.04
Total Personnel Services – Employee Benefits				\$41,346.02
600 <u>Supplies</u>				
610 General Supplies				695.20
Total Supplies				\$695.20
Total 2513 Receiving and Disbursing Funds Services				\$90,491.96

LEA : 124157203 Phoenixville Area SD

Printed 12/4/2023 9:37:16 AM

General Fund (10)

2514 Payroll Services

Elementary Secondary Federal Total

100 <u>Personnel Services – Salaries</u>				
100 Personnel Services – Salaries				67,966.18
Total Personnel Services – Salaries				\$67,966.18
200 <u>Personnel Services – Employee Benefits</u>				
220 Social Security Contributions				5,058.54
230 PSERS Retirement Contributions				23,964.88
270 Group Insurance – Self-Insurance				24,506.76
291 Other Retirement Plans				684.96
292 Health Savings Accounts				500.00
Total Personnel Services – Employee Benefits				\$54,715.14
Total 2514 Payroll Services				\$122,681.32

LEA : 124157203 Phoenixville Area SD

Printed 12/4/2023 9:37:16 AM

General Fund (10)				
2600 Operation and Maintenance of Plant Services	<u>Elementary</u>	<u>Secondary</u>	<u>Federal</u>	<u>Total</u>
100 <u>Personnel Services – Salaries</u>				
100 Personnel Services – Salaries				2,539,820.42
Total Personnel Services – Salaries				\$2,539,820.42
200 <u>Personnel Services – Employee Benefits</u>				
220 Social Security Contributions				186,985.95
230 PSERS Retirement Contributions				890,055.92
270 Group Insurance – Self-Insurance				688,918.95
291 Other Retirement Plans				41,038.72
292 Health Savings Accounts				3,750.00
Total Personnel Services – Employee Benefits				\$1,810,749.54
300 <u>Purchased Professional and Technical Services</u>				
330 Other Professional Services				46,567.49
350 Security / Safety Services				171,036.89
Total Purchased Professional and Technical Services				\$217,604.38
400 <u>Purchased Property Services</u>				
410 Cleaning Services				80,746.59
420 Utility Services				171,533.64
430 Repairs and Maintenance Services				419,691.52
440 Rentals				419,017.74
460 Extermination Services				17,196.91
490 Other Purchased Property Services				14,443.83
Total Purchased Property Services				\$1,122,630.23
500 <u>Other Purchased Services</u>				
529 Other Insurance				241,812.00
530 Communications				142,639.56
Total Other Purchased Services				\$384,451.56
600 <u>Supplies</u>				
610 General Supplies	520,941.93	9,935.50		530,877.43
620 Energy				587,713.47
650 Supplies & Fees – Technology Related				11,318.50
Total Supplies	\$520,941.93	\$9,935.50		\$1,129,909.40
700 <u>Property</u>				
752 Capital Equipment – Original and Additional				37,509.00
756 Capitalized Technology Equipment – Original				29,115.04
762 Capitalized Equipment - Replacement				79,739.30
Total Property				\$146,363.34
800 <u>Other Objects</u>				
810 Dues and Fees				10,288.02
Total Other Objects				\$10,288.02
Total 2600 Operation and Maintenance of Plant Services	\$520,941.93	\$9,935.50		\$7,361,816.89

LEA : 124157203 Phoenixville Area SD

Printed 12/4/2023 9:37:16 AM

General Fund (10)

2620 Operation of Buildings Services	Elementary	Secondary	Federal	Total
100 <u>Personnel Services – Salaries</u>				
100 Personnel Services – Salaries				2,510,015.50
Total Personnel Services – Salaries				\$2,510,015.50
200 <u>Personnel Services – Employee Benefits</u>				
220 Social Security Contributions				184,765.73
230 PSERS Retirement Contributions				883,646.61
270 Group Insurance – Self-Insurance				683,363.91
291 Other Retirement Plans				34,144.91
292 Health Savings Accounts				3,500.00
Total Personnel Services – Employee Benefits				\$1,789,421.16
300 <u>Purchased Professional and Technical Services</u>				
330 Other Professional Services				32,895.89
Total Purchased Professional and Technical Services				\$32,895.89
400 <u>Purchased Property Services</u>				
410 Cleaning Services				54,331.59
420 Utility Services				171,533.64
430 Repairs and Maintenance Services				398,758.57
440 Rentals				417,628.74
460 Extermination Services				17,196.91
490 Other Purchased Property Services				14,443.83
Total Purchased Property Services				\$1,073,893.28
500 <u>Other Purchased Services</u>				
529 Other Insurance				241,812.00
530 Communications				142,639.56
Total Other Purchased Services				\$384,451.56
600 <u>Supplies</u>				
610 General Supplies	465,816.31	9,902.30		475,718.61
620 Energy				587,713.47
650 Supplies & Fees – Technology Related				6,445.44
Total Supplies	\$465,816.31	\$9,902.30		\$1,069,877.52
700 <u>Property</u>				
756 Capitalized Technology Equipment – Original				20,798.00
762 Capitalized Equipment - Replacement				79,739.30
Total Property				\$100,537.30
800 <u>Other Objects</u>				
810 Dues and Fees				10,093.03
Total Other Objects				\$10,093.03
Total 2620 Operation of Buildings Services	\$465,816.31	\$9,902.30		\$6,971,185.24

LEA : 124157203 Phoenixville Area SD

Printed 12/4/2023 9:37:16 AM

General Fund (10)

2630 Care and Upkeep of Grounds Services	<u>Elementary</u>	<u>Secondary</u>	<u>Federal</u>	<u>Total</u>
400 <u>Purchased Property Services</u>				
410 Cleaning Services				26,415.00
430 Repairs and Maintenance Services				8,365.00
Total Purchased Property Services				\$34,780.00
600 <u>Supplies</u>				
610 General Supplies	44,478.14			44,478.14
Total Supplies	\$44,478.14			\$44,478.14
700 <u>Property</u>				
752 Capital Equipment – Original and Additional				37,509.00
Total Property				\$37,509.00
800 <u>Other Objects</u>				
810 Dues and Fees				135.00
Total Other Objects				\$135.00
Total 2630 Care and Upkeep of Grounds Services	\$44,478.14			\$116,902.14

LEA : 124157203 Phoenixville Area SD

Printed 12/4/2023 9:37:16 AM

General Fund (10)

2640 Care and Upkeep of Equipment Services	<u>Elementary</u>	<u>Secondary</u>	<u>Federal</u>	<u>Total</u>
600 <u>Supplies</u>				
650 Supplies & Fees – Technology Related				2,652.07
Total Supplies				\$2,652.07
Total 2640 Care and Upkeep of Equipment Services				\$2,652.07

LEA : 124157203 Phoenixville Area SD

Printed 12/4/2023 9:37:16 AM

General Fund (10)				
2650 Vehicle Operation and Maintenance Services (Other Than Student Transportation Vehicles)	<u>Elementary</u>	<u>Secondary</u>	<u>Federal</u>	<u>Total</u>
400 <u>Purchased Property Services</u>				
430 Repairs and Maintenance Services				79.71
440 Rentals				1,389.00
Total Purchased Property Services				\$1,468.71
600 <u>Supplies</u>				
610 General Supplies	7,876.80			7,876.80
650 Supplies & Fees – Technology Related				800.00
Total Supplies	\$7,876.80			\$8,676.80
800 <u>Other Objects</u>				
810 Dues and Fees				59.99
Total Other Objects				\$59.99
Total 2650 Vehicle Operation and Maintenance Services (Other Than Student Transportation Vehicles)	\$7,876.80			\$10,205.50

LEA : 124157203 Phoenixville Area SD

Printed 12/4/2023 9:37:16 AM

General Fund (10)				
2660 Safety and Security Services	<u>Elementary</u>	<u>Secondary</u>	<u>Federal</u>	<u>Total</u>
100 <u>Personnel Services – Salaries</u>				
100 Personnel Services – Salaries				29,804.92
Total Personnel Services – Salaries				\$29,804.92
200 <u>Personnel Services – Employee Benefits</u>				
220 Social Security Contributions				2,220.22
230 PSERS Retirement Contributions				6,409.31
270 Group Insurance – Self-Insurance				5,555.04
291 Other Retirement Plans				6,893.81
292 Health Savings Accounts				250.00
Total Personnel Services – Employee Benefits				\$21,328.38
300 <u>Purchased Professional and Technical Services</u>				
330 Other Professional Services				13,671.60
350 Security / Safety Services				171,036.89
Total Purchased Professional and Technical Services				\$184,708.49
400 <u>Purchased Property Services</u>				
430 Repairs and Maintenance Services				12,488.24
Total Purchased Property Services				\$12,488.24
600 <u>Supplies</u>				
610 General Supplies	2,770.68	33.20		2,803.88
650 Supplies & Fees – Technology Related				1,420.99
Total Supplies	\$2,770.68	\$33.20		\$4,224.87
700 <u>Property</u>				
756 Capitalized Technology Equipment – Original				8,317.04
Total Property				\$8,317.04
Total 2660 Safety and Security Services	\$2,770.68	\$33.20		\$260,871.94

LEA : 124157203 Phoenixville Area SD

Printed 12/4/2023 9:37:16 AM

General Fund (10)				
2700 Student Transportation Services	<u>Elementary</u>	<u>Secondary</u>	<u>Federal</u>	<u>Total</u>
100 <u>Personnel Services – Salaries</u>				
100 Personnel Services – Salaries				149,057.38
Total Personnel Services – Salaries				\$149,057.38
200 <u>Personnel Services – Employee Benefits</u>				
220 Social Security Contributions				10,842.29
230 PSERS Retirement Contributions				50,688.81
270 Group Insurance – Self-Insurance				22,468.80
291 Other Retirement Plans				3,408.40
292 Health Savings Accounts				1,000.00
Total Personnel Services – Employee Benefits				\$88,408.30
300 <u>Purchased Professional and Technical Services</u>				
350 Security / Safety Services				94,791.88
Total Purchased Professional and Technical Services				\$94,791.88
400 <u>Purchased Property Services</u>				
430 Repairs and Maintenance Services				4,612.35
Total Purchased Property Services				\$4,612.35
500 <u>Other Purchased Services</u>				
513 Contracted Carriers				4,078,341.72
516 Student Transportation Services From the IU				8,933.11
Total Other Purchased Services				\$4,087,274.83
600 <u>Supplies</u>				
610 General Supplies				1,938.86
630 Food				40.00
650 Supplies & Fees – Technology Related				2,925.00
Total Supplies				\$4,903.86
800 <u>Other Objects</u>				
810 Dues and Fees				15.85
Total Other Objects				\$15.85
Total 2700 Student Transportation Services				\$4,429,064.45

LEA : 124157203 Phoenixville Area SD

Printed 12/4/2023 9:37:16 AM

General Fund (10)				
2710 Supervision of Student Transportation Services	<u>Elementary</u>	<u>Secondary</u>	<u>Federal</u>	<u>Total</u>
100 <u>Personnel Services – Salaries</u>				
100 Personnel Services – Salaries				149,057.38
Total Personnel Services – Salaries				\$149,057.38
200 <u>Personnel Services – Employee Benefits</u>				
220 Social Security Contributions				10,842.29
230 PSERS Retirement Contributions				50,688.81
270 Group Insurance – Self-Insurance				22,468.80
291 Other Retirement Plans				3,408.40
292 Health Savings Accounts				1,000.00
Total Personnel Services – Employee Benefits				\$88,408.30
300 <u>Purchased Professional and Technical Services</u>				
350 Security / Safety Services				94,791.88
Total Purchased Professional and Technical Services				\$94,791.88
400 <u>Purchased Property Services</u>				
430 Repairs and Maintenance Services				4,612.35
Total Purchased Property Services				\$4,612.35
500 <u>Other Purchased Services</u>				
513 Contracted Carriers				2,477,735.01
516 Student Transportation Services From the IU				8,933.11
Total Other Purchased Services				\$2,486,668.12
600 <u>Supplies</u>				
610 General Supplies				1,938.86
630 Food				40.00
650 Supplies & Fees – Technology Related				2,925.00
Total Supplies				\$4,903.86
800 <u>Other Objects</u>				
810 Dues and Fees				15.85
Total Other Objects				\$15.85
Total 2710 Supervision of Student Transportation Services				\$2,828,457.74

LEA : 124157203 Phoenixville Area SD

Printed 12/4/2023 9:37:16 AM

General Fund (10)				
2711 Supervision of Student Transportation Services – Head of Component	<u>Elementary</u>	<u>Secondary</u>	<u>Federal</u>	<u>Total</u>
100 <u>Personnel Services – Salaries</u>				
100 Personnel Services – Salaries				149,057.38
Total Personnel Services – Salaries				\$149,057.38
200 <u>Personnel Services – Employee Benefits</u>				
220 Social Security Contributions				10,842.29
230 PSERS Retirement Contributions				50,688.81
270 Group Insurance – Self-Insurance				22,468.80
291 Other Retirement Plans				3,408.40
292 Health Savings Accounts				1,000.00
Total Personnel Services – Employee Benefits				\$88,408.30
300 <u>Purchased Professional and Technical Services</u>				
350 Security / Safety Services				94,791.88
Total Purchased Professional and Technical Services				\$94,791.88
400 <u>Purchased Property Services</u>				
430 Repairs and Maintenance Services				4,612.35
Total Purchased Property Services				\$4,612.35
500 <u>Other Purchased Services</u>				
513 Contracted Carriers				2,477,735.01
516 Student Transportation Services From the IU				8,933.11
Total Other Purchased Services				\$2,486,668.12
600 <u>Supplies</u>				
610 General Supplies				1,938.86
630 Food				40.00
650 Supplies & Fees – Technology Related				2,925.00
Total Supplies				\$4,903.86
800 <u>Other Objects</u>				
810 Dues and Fees				15.85
Total Other Objects				\$15.85
Total 2711 Supervision of Student Transportation Services – Head of Component				\$2,828,457.74

LEA : 124157203 Phoenixville Area SD

Printed 12/4/2023 9:37:16 AM

General Fund (10)

2750 Nonpublic Transportation	<u>Elementary</u>	<u>Secondary</u>	<u>Federal</u>	<u>Total</u>
500 <u>Other Purchased Services</u>				
513 Contracted Carriers				1,600,606.71
Total Other Purchased Services				\$1,600,606.71
Total 2750 Nonpublic Transportation				\$1,600,606.71

LEA : 124157203 Phoenixville Area SD

Printed 12/4/2023 9:37:16 AM

General Fund (10)				
2800 Support Services – Central				
	<u>Elementary</u>	<u>Secondary</u>	<u>Federal</u>	<u>Total</u>
100 <u>Personnel Services – Salaries</u>				
100 Personnel Services – Salaries				864,966.53
Total Personnel Services – Salaries				\$864,966.53
200 <u>Personnel Services – Employee Benefits</u>				
210 Group Insurance – Contracted Provider				487.28
220 Social Security Contributions				63,131.61
230 PSERS Retirement Contributions				316,409.70
240 Tuition Reimbursement				10,583.10
250 Unemployment Compensation				2,429.28
260 Workers' Compensation				176,540.47
270 Group Insurance – Self-Insurance				232,375.69
291 Other Retirement Plans				16,282.85
292 Health Savings Accounts				4,000.00
Total Personnel Services – Employee Benefits				\$822,239.98
300 <u>Purchased Professional and Technical Services</u>				
330 Other Professional Services				189,422.50
340 Technical Services				12,000.00
360 Employee Training and Development Services			98,116.80	123,802.34
Total Purchased Professional and Technical Services			\$98,116.80	\$325,224.84
400 <u>Purchased Property Services</u>				
430 Repairs and Maintenance Services				129,382.86
440 Rentals				1,000.00
Total Purchased Property Services				\$130,382.86
500 <u>Other Purchased Services</u>				
530 Communications				407.05
580 Travel				2,699.63
Total Other Purchased Services				\$3,106.68
600 <u>Supplies</u>				
610 General Supplies				14,406.67
630 Food				1,096.20
640 Books and Periodicals			203.76	527.37
650 Supplies & Fees – Technology Related			10,503.24	370,188.86
Total Supplies			\$10,707.00	\$386,219.10
700 <u>Property</u>				
738 Technology Software Lease and Other Right-to-Use Arrangements				38,984.21
756 Capitalized Technology Equipment – Original			95,355.00	275,017.75
Total Property			\$95,355.00	\$314,001.96
800 <u>Other Objects</u>				
810 Dues and Fees				855.00
Total Other Objects				\$855.00
Total 2800 Support Services – Central			\$204,178.80	\$2,846,996.95

LEA : 124157203 Phoenixville Area SD

Printed 12/4/2023 9:37:16 AM

General Fund (10)

2810 Planning, Research, Development and Evaluation Services	<u>Elementary</u>	<u>Secondary</u>	<u>Federal</u>	<u>Total</u>
400 <u>Purchased Property Services</u>				
430 Repairs and Maintenance Services				27,094.03
Total Purchased Property Services				\$27,094.03
700 <u>Property</u>				
738 Technology Software Lease and Other Right-to-Use Arrangements				38,984.21
Total Property				\$38,984.21
Total 2810 Planning, Research, Development and Evaluation Services				\$66,078.24

LEA : 124157203 Phoenixville Area SD

Printed 12/4/2023 9:37:16 AM

General Fund (10)

2820 Information Services

	<u>Elementary</u>	<u>Secondary</u>	<u>Federal</u>	<u>Total</u>
100 <u>Personnel Services – Salaries</u>				
100 Personnel Services – Salaries				417,206.97
Total Personnel Services – Salaries				\$417,206.97
200 <u>Personnel Services – Employee Benefits</u>				
210 Group Insurance – Contracted Provider				487.28
220 Social Security Contributions				30,782.23
230 PSERS Retirement Contributions				148,434.54
270 Group Insurance – Self-Insurance				104,753.44
291 Other Retirement Plans				792.54
292 Health Savings Accounts				500.00
Total Personnel Services – Employee Benefits				\$285,750.03
600 <u>Supplies</u>				
610 General Supplies				97.68
Total Supplies				\$97.68
Total 2820 Information Services				\$703,054.68

LEA : 124157203 Phoenixville Area SD

Printed 12/4/2023 9:37:16 AM

General Fund (10)

2821 Supervision of Information Services	<u>Elementary</u>	<u>Secondary</u>	<u>Federal</u>	<u>Total</u>
100 <u>Personnel Services – Salaries</u>				
100 Personnel Services – Salaries				417,206.97
Total Personnel Services – Salaries				\$417,206.97
200 <u>Personnel Services – Employee Benefits</u>				
210 Group Insurance – Contracted Provider				487.28
220 Social Security Contributions				30,782.23
230 PSERS Retirement Contributions				148,434.54
270 Group Insurance – Self-Insurance				104,753.44
291 Other Retirement Plans				792.54
292 Health Savings Accounts				500.00
Total Personnel Services – Employee Benefits				\$285,750.03
600 <u>Supplies</u>				
610 General Supplies				97.68
Total Supplies				\$97.68
Total 2821 Supervision of Information Services				\$703,054.68

LEA : 124157203 Phoenixville Area SD

Printed 12/4/2023 9:37:16 AM

General Fund (10)				
2830 Staff Services	<u>Elementary</u>	<u>Secondary</u>	<u>Federal</u>	<u>Total</u>
100 <u>Personnel Services – Salaries</u>				
100 Personnel Services – Salaries				332,373.32
Total Personnel Services – Salaries				\$332,373.32
200 <u>Personnel Services – Employee Benefits</u>				
220 Social Security Contributions				23,740.00
230 PSERS Retirement Contributions				127,536.79
240 Tuition Reimbursement				10,583.10
250 Unemployment Compensation				2,429.28
260 Workers' Compensation				176,540.47
270 Group Insurance – Self-Insurance				105,035.00
291 Other Retirement Plans				10,713.12
292 Health Savings Accounts				2,500.00
Total Personnel Services – Employee Benefits				\$459,077.76
300 <u>Purchased Professional and Technical Services</u>				
330 Other Professional Services				34,047.50
360 Employee Training and Development Services			98,116.80	123,802.34
Total Purchased Professional and Technical Services			\$98,116.80	\$157,849.84
400 <u>Purchased Property Services</u>				
440 Rentals				1,000.00
Total Purchased Property Services				\$1,000.00
500 <u>Other Purchased Services</u>				
530 Communications				74.51
580 Travel				2,676.81
Total Other Purchased Services				\$2,751.32
600 <u>Supplies</u>				
610 General Supplies				1,977.83
630 Food				1,096.20
640 Books and Periodicals			203.76	527.37
650 Supplies & Fees – Technology Related			10,503.24	23,349.24
Total Supplies			\$10,707.00	\$26,950.64
800 <u>Other Objects</u>				
810 Dues and Fees				855.00
Total Other Objects				\$855.00
Total 2830 Staff Services			\$108,823.80	\$980,857.88

LEA : 124157203 Phoenixville Area SD

Printed 12/4/2023 9:37:16 AM

General Fund (10)

2831 Supervision of Staff Services

Elementary Secondary Federal Total

100 <u>Personnel Services – Salaries</u>				
100 Personnel Services – Salaries				330,290.00
Total Personnel Services – Salaries				\$330,290.00
200 <u>Personnel Services – Employee Benefits</u>				
220 Social Security Contributions				23,585.32
230 PSERS Retirement Contributions				126,802.21
250 Unemployment Compensation				2,429.28
260 Workers' Compensation				176,540.47
270 Group Insurance – Self-Insurance				105,035.00
291 Other Retirement Plans				10,713.12
292 Health Savings Accounts				2,500.00
Total Personnel Services – Employee Benefits				\$447,605.40
300 <u>Purchased Professional and Technical Services</u>				
330 Other Professional Services				34,047.50
Total Purchased Professional and Technical Services				\$34,047.50
500 <u>Other Purchased Services</u>				
530 Communications				74.51
Total Other Purchased Services				\$74.51
600 <u>Supplies</u>				
610 General Supplies				1,977.83
650 Supplies & Fees – Technology Related			10,503.24	23,349.24
Total Supplies			\$10,503.24	\$25,327.07
800 <u>Other Objects</u>				
810 Dues and Fees				855.00
Total Other Objects				\$855.00
Total 2831 Supervision of Staff Services			\$10,503.24	\$838,199.48

LEA : 124157203 Phoenixville Area SD

Printed 12/4/2023 9:37:16 AM

General Fund (10)				
2834 Staff Development Services – Non-Instructional, Certified Staff Only	<u>Elementary</u>	<u>Secondary</u>	<u>Federal</u>	<u>Total</u>
100 <u>Personnel Services – Salaries</u>				
100 Personnel Services – Salaries				2,083.32
Total Personnel Services – Salaries				\$2,083.32
200 <u>Personnel Services – Employee Benefits</u>				
220 Social Security Contributions				154.68
230 PSERS Retirement Contributions				734.58
240 Tuition Reimbursement				10,583.10
Total Personnel Services – Employee Benefits				\$11,472.36
300 <u>Purchased Professional and Technical Services</u>				
360 Employee Training and Development Services			98,116.80	116,358.65
Total Purchased Professional and Technical Services			\$98,116.80	\$116,358.65
400 <u>Purchased Property Services</u>				
440 Rentals				500.00
Total Purchased Property Services				\$500.00
500 <u>Other Purchased Services</u>				
580 Travel				2,368.15
Total Other Purchased Services				\$2,368.15
600 <u>Supplies</u>				
640 Books and Periodicals			203.76	527.37
Total Supplies			\$203.76	\$527.37
Total 2834 Staff Development Services – Non-Instructional, Certified Staff Only			\$98,320.56	\$133,309.85

LEA : 124157203 Phoenixville Area SD

Printed 12/4/2023 9:37:16 AM

General Fund (10)

2836 Staff Development Services – Non-Instructional, Non-Certified Staff Only	<u>Elementary</u>	<u>Secondary</u>	<u>Federal</u>	<u>Total</u>
300 <u>Purchased Professional and Technical Services</u>				
360 Employee Training and Development Services				7,443.69
Total Purchased Professional and Technical Services				\$7,443.69
400 <u>Purchased Property Services</u>				
440 Rentals				500.00
Total Purchased Property Services				\$500.00
500 <u>Other Purchased Services</u>				
580 Travel				308.66
Total Other Purchased Services				\$308.66
Total 2836 Staff Development Services – Non-Instructional, Non-Certified Staff Only				\$8,252.35

LEA : 124157203 Phoenixville Area SD

Printed 12/4/2023 9:37:16 AM

General Fund (10)				
2839 Other Staff Services	<u>Elementary</u>	<u>Secondary</u>	<u>Federal</u>	<u>Total</u>
600 <u>Supplies</u>				
630 Food				1,096.20
Total Supplies				\$1,096.20
Total 2839 Other Staff Services				\$1,096.20

LEA : 124157203 Phoenixville Area SD

Printed 12/4/2023 9:37:16 AM

General Fund (10)				
2840 Data Processing Services				
	<u>Elementary</u>	<u>Secondary</u>	<u>Federal</u>	<u>Total</u>
100 <u>Personnel Services – Salaries</u>				
100 Personnel Services – Salaries				115,386.24
Total Personnel Services – Salaries				\$115,386.24
200 <u>Personnel Services – Employee Benefits</u>				
220 Social Security Contributions				8,609.38
230 PSERS Retirement Contributions				40,438.37
270 Group Insurance – Self-Insurance				22,587.25
291 Other Retirement Plans				4,777.19
292 Health Savings Accounts				1,000.00
Total Personnel Services – Employee Benefits				\$77,412.19
300 <u>Purchased Professional and Technical Services</u>				
330 Other Professional Services				14,400.00
340 Technical Services				12,000.00
Total Purchased Professional and Technical Services				\$26,400.00
400 <u>Purchased Property Services</u>				
430 Repairs and Maintenance Services				102,288.83
Total Purchased Property Services				\$102,288.83
500 <u>Other Purchased Services</u>				
530 Communications				332.54
580 Travel				22.82
Total Other Purchased Services				\$355.36
600 <u>Supplies</u>				
610 General Supplies				12,331.16
650 Supplies & Fees – Technology Related				346,839.62
Total Supplies				\$359,170.78
700 <u>Property</u>				
756 Capitalized Technology Equipment – Original			95,355.00	275,017.75
Total Property			\$95,355.00	\$275,017.75
Total 2840 Data Processing Services			\$95,355.00	\$956,031.15

LEA : 124157203 Phoenixville Area SD

Printed 12/4/2023 9:37:16 AM

General Fund (10)

2850 State and Federal Agency Liaison Services	<u>Elementary</u>	<u>Secondary</u>	<u>Federal</u>	<u>Total</u>
300 <u>Purchased Professional and Technical Services</u>				
330 Other Professional Services				65,000.00
Total Purchased Professional and Technical Services				\$65,000.00
Total 2850 State and Federal Agency Liaison Services				\$65,000.00

LEA : 124157203 Phoenixville Area SD

Printed 12/4/2023 9:37:16 AM

General Fund (10)

2860 Management Services

<u>Elementary</u>	<u>Secondary</u>	<u>Federal</u>	<u>Total</u>
-------------------	------------------	----------------	--------------

300 Purchased Professional and Technical Services

330 Other Professional Services			75,975.00
---------------------------------	--	--	-----------

Total Purchased Professional and Technical Services			\$75,975.00
--	--	--	--------------------

Total 2860 Management Services			\$75,975.00
---------------------------------------	--	--	--------------------

LEA : 124157203 Phoenixville Area SD

Printed 12/4/2023 9:37:16 AM

General Fund (10)

2900 Other Support Services	<u>Elementary</u>	<u>Secondary</u>	<u>Federal</u>	<u>Total</u>
500 <u>Other Purchased Services</u>				
595 IU Payments By Withholding				36,692.31
Total Other Purchased Services				\$36,692.31
800 <u>Other Objects</u>				
899 Pass-Through Funds				45,058.58
Total Other Objects				\$45,058.58
Total 2900 Other Support Services				\$81,750.89

LEA : 124157203 Phoenixville Area SD

Printed 12/4/2023 9:37:16 AM

General Fund (10)

2910 Support Services Not Listed Elsewhere In the 2000 Series

Elementary Secondary Federal Total

500 Other Purchased Services

595 IU Payments By Withholding 36,692.31

Total Other Purchased Services \$36,692.31

Total 2910 Support Services Not Listed Elsewhere In the 2000 Series \$36,692.31

Page 126

LEA : 124157203 Phoenixville Area SD

Printed 12/4/2023 9:37:21 AM

General Fund (10)

3000 Operation of Non-Instructional Services		<u>Total</u>
100 <u>Personnel Services – Salaries</u>		
100 Personnel Services – Salaries		1,148,881.72
Total Personnel Services – Salaries		\$1,148,881.72
200 <u>Personnel Services – Employee Benefits</u>		
220 Social Security Contributions		85,807.52
230 PSERS Retirement Contributions		590,417.34
270 Group Insurance – Self-Insurance		121,171.33
291 Other Retirement Plans		3,692.18
292 Health Savings Accounts		8,000.00
Total Personnel Services – Employee Benefits		\$809,088.37
300 <u>Purchased Professional and Technical Services</u>		
330 Other Professional Services		109,831.28
350 Security / Safety Services		21,170.50
Total Purchased Professional and Technical Services		\$131,001.78
400 <u>Purchased Property Services</u>		
440 Rentals		12,986.00
Total Purchased Property Services		\$12,986.00
500 <u>Other Purchased Services</u>		
510 Student Transportation Services		85,367.74
580 Travel		10,571.89
Total Other Purchased Services		\$95,939.63
600 <u>Supplies</u>		
610 General Supplies		72,671.99
650 Supplies & Fees – Technology Related		3,002.92
Total Supplies		\$75,674.91
700 <u>Property</u>		
756 Capitalized Technology Equipment – Original		7,283.00
Total Property		\$7,283.00
800 <u>Other Objects</u>		
810 Dues and Fees		6,795.49
860 Grants To Municipal and Community Service Organizations		578,340.00
890 Miscellaneous Expenditures		14,265.00
Total Other Objects		\$599,400.49
Total 3000 Operation of Non-Instructional Services		\$2,880,255.90

LEA : 124157203 Phoenixville Area SD

Printed 12/4/2023 9:37:21 AM

General Fund (10)				
3200 Student Activities				
	<u>Elementary</u>	<u>Secondary</u>	<u>Federal</u>	<u>Total</u>
100 <u>Personnel Services – Salaries</u>				
100 Personnel Services – Salaries				1,127,077.82
Total Personnel Services – Salaries				\$1,127,077.82
200 <u>Personnel Services – Employee Benefits</u>				
220 Social Security Contributions				84,163.87
230 PSERS Retirement Contributions				389,310.71
270 Group Insurance – Self-Insurance				33,134.33
291 Other Retirement Plans				3,692.18
292 Health Savings Accounts				1,000.00
Total Personnel Services – Employee Benefits				\$511,301.09
300 <u>Purchased Professional and Technical Services</u>				
330 Other Professional Services				109,831.28
350 Security / Safety Services				21,170.50
Total Purchased Professional and Technical Services				\$131,001.78
400 <u>Purchased Property Services</u>				
440 Rentals				12,986.00
Total Purchased Property Services				\$12,986.00
500 <u>Other Purchased Services</u>				
510 Student Transportation Services				85,367.74
580 Travel				10,571.89
Total Other Purchased Services				\$95,939.63
600 <u>Supplies</u>				
610 General Supplies				72,671.99
650 Supplies & Fees – Technology Related				3,002.92
Total Supplies				\$75,674.91
700 <u>Property</u>				
756 Capitalized Technology Equipment – Original				7,283.00
Total Property				\$7,283.00
800 <u>Other Objects</u>				
810 Dues and Fees				6,795.49
890 Miscellaneous Expenditures				14,265.00
Total Other Objects				\$21,060.49
Total 3200 Student Activities				\$1,982,324.72

LEA : 124157203 Phoenixville Area SD

Printed 12/4/2023 9:37:21 AM

General Fund (10)

3300 Community Services	<u>Elementary</u>	<u>Secondary</u>	<u>Federal</u>	<u>Total</u>
100 <u>Personnel Services – Salaries</u>				
100 Personnel Services – Salaries				21,803.90
Total Personnel Services – Salaries				\$21,803.90
200 <u>Personnel Services – Employee Benefits</u>				
220 Social Security Contributions				1,643.65
230 PSERS Retirement Contributions				201,106.63
270 Group Insurance – Self-Insurance				88,037.00
292 Health Savings Accounts				7,000.00
Total Personnel Services – Employee Benefits				\$297,787.28
800 <u>Other Objects</u>				
860 Grants To Municipal and Community Service Organizations				578,340.00
Total Other Objects				\$578,340.00
Total 3300 Community Services				\$897,931.18

General Fund (10)

4000 Facilities Acquisition, Construction and Improvement Services		<u>Total</u>
400 <u>Purchased Property Services</u>		
430 Repairs and Maintenance Services		541,089.40
450 Construction Services		117,951.06
Total Purchased Property Services		\$659,040.46
700 <u>Property</u>		
752 Capital Equipment – Original and Additional		222,892.31
Total Property		\$222,892.31
Total 4000 Facilities Acquisition, Construction and Improvement Services		\$881,932.77

LEA : 124157203 Phoenixville Area SD

Printed 12/4/2023 9:37:24 AM

General Fund (10)

4200 Existing Site Improvement Services	<u>Elementary</u>	<u>Secondary</u>	<u>Federal</u>	<u>Total</u>
400 <u>Purchased Property Services</u>				
430 Repairs and Maintenance Services			396,655.00	396,655.00
450 Construction Services				117,951.06
Total Purchased Property Services			\$396,655.00	\$514,606.06
Total 4200 Existing Site Improvement Services			\$396,655.00	\$514,606.06

LEA : 124157203 Phoenixville Area SD

Printed 12/4/2023 9:37:24 AM

General Fund (10)

4600 Existing Building Improvement Services	<u>Elementary</u>	<u>Secondary</u>	<u>Federal</u>	<u>Total</u>
400 <u>Purchased Property Services</u>				
430 Repairs and Maintenance Services			130,128.37	144,434.40
Total Purchased Property Services			\$130,128.37	\$144,434.40
700 <u>Property</u>				
752 Capital Equipment – Original and Additional				222,892.31
Total Property				\$222,892.31
Total 4600 Existing Building Improvement Services			\$130,128.37	\$367,326.71

LEA : 124157203 Phoenixville Area SD

Printed 12/4/2023 9:37:30 AM

General Fund (10)

5000 Other Expenditures and Financing Uses

Total

800	<u>Other Objects</u>	
830	Interest	3,130,762.72
880	Refunds of Prior Years' Receipts	5,488.56
Total Other Objects		\$3,136,251.28
900	<u>Other Uses of Funds</u>	
910	Redemption of Principal	7,649,831.02
932	Capital Reserve Fund Transfers Applicable To Fund 32	1,300,000.00
Total Other Uses of Funds		\$8,949,831.02
Total 5000 Other Expenditures and Financing Uses		\$12,086,082.30

LEA : 124157203 Phoenixville Area SD

Printed 12/4/2023 9:37:30 AM

General Fund (10)

5100 Debt Service / Other Expenditures and Financing Uses	<u>Elementary</u>	<u>Secondary</u>	<u>Federal</u>	<u>Total</u>
800 <u>Other Objects</u>				
830 Interest				3,130,762.72
880 Refunds of Prior Years' Receipts				5,488.56
Total Other Objects				\$3,136,251.28
900 <u>Other Uses of Funds</u>				
910 Redemption of Principal				7,649,831.02
Total Other Uses of Funds				\$7,649,831.02
Total 5100 Debt Service / Other Expenditures and Financing Uses				\$10,786,082.30

LEA : 124157203 Phoenixville Area SD

Printed 12/4/2023 9:37:30 AM

General Fund (10)

5110 Debt Service	<u>Elementary</u>	<u>Secondary</u>	<u>Federal</u>	<u>Total</u>
800 <u>Other Objects</u>				
830 Interest				3,097,156.90
Total Other Objects				\$3,097,156.90
900 <u>Other Uses of Funds</u>				
910 Redemption of Principal				7,416,000.00
Total Other Uses of Funds				\$7,416,000.00
Total 5110 Debt Service				\$10,513,156.90

LEA : 124157203 Phoenixville Area SD

Printed 12/4/2023 9:37:30 AM

General Fund (10)

5130 Refund of Prior Year Revenues / Receipts	<u>Elementary</u>	<u>Secondary</u>	<u>Federal</u>	<u>Total</u>
800 <u>Other Objects</u>				
880 Refunds of Prior Years' Receipts				5,488.56
Total Other Objects				\$5,488.56
Total 5130 Refund of Prior Year Revenues / Receipts				\$5,488.56

LEA : 124157203 Phoenixville Area SD

Printed 12/4/2023 9:37:30 AM

General Fund (10)

5140 Leases and Other Right-to-Use Arrangements	<u>Elementary</u>	<u>Secondary</u>	<u>Federal</u>	<u>Total</u>
800 <u>Other Objects</u>				
830 Interest				33,605.82
Total Other Objects				\$33,605.82
900 <u>Other Uses of Funds</u>				
910 Redemption of Principal				233,831.02
Total Other Uses of Funds				\$233,831.02
Total 5140 Leases and Other Right-to-Use Arrangements				\$267,436.84

LEA : 124157203 Phoenixville Area SD

Printed 12/4/2023 9:37:30 AM

General Fund (10)

5200 Interfund Transfers – Out	<u>Elementary</u>	<u>Secondary</u>	<u>Federal</u>	<u>Total</u>
900 <u>Other Uses of Funds</u>				
932 Capital Reserve Fund Transfers Applicable To Fund 32				1,300,000.00
Total Other Uses of Funds				\$1,300,000.00
Total 5200 Interfund Transfers – Out				\$1,300,000.00

LEA : 124157203 Phoenixville Area SD

Printed 12/4/2023 9:37:30 AM

General Fund (10)

5230 Capital Projects Fund Transfers	<u>Elementary</u>	<u>Secondary</u>	<u>Federal</u>	<u>Total</u>
900 <u>Other Uses of Funds</u>				
932 Capital Reserve Fund Transfers Applicable To Fund 32				1,300,000.00
Total Other Uses of Funds				\$1,300,000.00
Total 5230 Capital Projects Fund Transfers				\$1,300,000.00

LEA : 124157203 Phoenixville Area SD

Printed 12/4/2023 9:37:26 AM

Capital Reserve Fund - § 1431 (32)

4000 Facilities Acquisition, Construction and Improvement Services

Total

400 Purchased Property Services

430 Repairs and Maintenance Services	618,906.39
--------------------------------------	------------

Total Purchased Property Services	\$618,906.39
-----------------------------------	--------------

Total 4000 Facilities Acquisition, Construction and Improvement Services	\$618,906.39
--	--------------

LEA : 124157203 Phoenixville Area SD

Printed 12/4/2023 9:37:26 AM

Capital Reserve Fund - § 1431 (32)				
4200 Existing Site Improvement Services	<u>Elementary</u>	<u>Secondary</u>	<u>Federal</u>	<u>Total</u>
400 <u>Purchased Property Services</u>				
430 Repairs and Maintenance Services				618,906.39
Total Purchased Property Services				\$618,906.39
Total 4200 Existing Site Improvement Services				\$618,906.39

LEA : 124157203 Phoenixville Area SD

Printed 12/4/2023 9:37:19 AM

Other Capital Projects Fund (39)

		<u>Total</u>
2000 Support Services		
700 <u>Property</u>		
736 Technology Equipment Lease		857,482.35
Total Property		\$857,482.35
800 <u>Other Objects</u>		
810 Dues and Fees		75,500.00
Total Other Objects		\$75,500.00
Total 2000 Support Services		\$932,982.35

LEA : 124157203 Phoenixville Area SD

Printed 12/4/2023 9:37:19 AM

Other Capital Projects Fund (39)

2300 Support Services – Administration

<u>Elementary</u>	<u>Secondary</u>	<u>Federal</u>	<u>Total</u>
-------------------	------------------	----------------	--------------

800 Other Objects

810 Dues and Fees			75,500.00
-------------------	--	--	-----------

Total Other Objects			\$75,500.00
----------------------------	--	--	--------------------

Total 2300 Support Services – Administration			\$75,500.00
---	--	--	--------------------

LEA : 124157203 Phoenixville Area SD

Printed 12/4/2023 9:37:19 AM

Other Capital Projects Fund (39)

2390 Other Administration Services

Elementary Secondary Federal Total

800 Other Objects

810 Dues and Fees 75,500.00

Total Other Objects \$75,500.00

Total 2390 Other Administration Services \$75,500.00

LEA : 124157203 Phoenixville Area SD

Printed 12/4/2023 9:37:19 AM

Other Capital Projects Fund (39)

2800 Support Services – Central

Elementary Secondary Federal Total

700 <u>Property</u>				
736 Technology Equipment Lease				857,482.35
Total Property				\$857,482.35
Total 2800 Support Services – Central				\$857,482.35

LEA : 124157203 Phoenixville Area SD

Printed 12/4/2023 9:37:19 AM

Other Capital Projects Fund (39)

2810 Planning, Research, Development and Evaluation Services

Elementary

Secondary

Federal

Total

700 Property

736 Technology Equipment Lease

857,482.35

Total Property				\$857,482.35
Total 2810 Planning, Research, Development and Evaluation Services				\$857,482.35

LEA : 124157203 Phoenixville Area SD

Printed 12/4/2023 9:37:28 AM

Other Capital Projects Fund (39)

4000 Facilities Acquisition, Construction and Improvement Services

Total

300 Purchased Professional and Technical Services

330 Other Professional Services	1,773.51
---------------------------------	----------

Total Purchased Professional and Technical Services	\$1,773.51
---	------------

400 Purchased Property Services

450 Construction Services	1,859,263.38
---------------------------	--------------

Total Purchased Property Services	\$1,859,263.38
-----------------------------------	----------------

600 Supplies

610 General Supplies	8,546.71
----------------------	----------

Total Supplies	\$8,546.71
----------------	------------

Total 4000 Facilities Acquisition, Construction and Improvement Services	\$1,869,583.60
--	----------------

LEA : 124157203 Phoenixville Area SD

Printed 12/4/2023 9:37:28 AM

Other Capital Projects Fund (39)

4500 Building Acquisition and Construction Services – Original and Additional	<u>Elementary</u>	<u>Secondary</u>	<u>Federal</u>	<u>Total</u>
300 <u>Purchased Professional and Technical Services</u>				
330 Other Professional Services				1,773.51
Total Purchased Professional and Technical Services				\$1,773.51
400 <u>Purchased Property Services</u>				
450 Construction Services				1,859,263.38
Total Purchased Property Services				\$1,859,263.38
600 <u>Supplies</u>				
610 General Supplies				8,546.71
Total Supplies				\$8,546.71
Total 4500 Building Acquisition and Construction Services – Original and Additional				\$1,869,583.60

	<u>General Fund(10)</u>	<u>Student Sponsored Activity Fund(21)</u>	<u>Public Purpose Trust(27)</u>	<u>Other Compt Approved (28)</u>	<u>Athletic / Activity(29)</u>
1000 <u>Instruction</u>					
1100 Regular Programs - Elementary / Secondary	40,485,372.54				
1200 Special Programs - Elementary / Secondary	14,177,520.99				
1300 Vocational Education	855,104.00				
1400 Other Instructional Programs - Elementary / Secondary	1,097,180.12				
Total Instruction	\$56,615,177.65				
2000 <u>Support Services</u>					
2100 Support Services - Students	5,922,339.20				
2200 Support Services - Instructional Staff	2,811,594.46				
2300 Support Services - Administration	5,714,785.66				
2400 Support Services - Pupil Health	1,670,668.40				
2500 Support Services - Business	1,178,437.38				
2600 Operation and Maintenance of Plant Services	7,361,816.89				
2700 Student Transportation Services	4,429,064.45				
2800 Support Services - Central	2,846,996.95				
2900 Other Support Services	81,750.89				
Total Support Services	\$32,017,454.28				
3000 <u>Operation of Non-Instructional Services</u>					
3200 Student Activities	1,982,324.72				
3300 Community Services	897,931.18				
Total Operation of Non-Instructional Services	\$2,880,255.90				
4000 <u>Facilities Acquisition, Construction and Improvement Services</u>					
4200 Existing Site Improvement Services	514,606.06				
4500 Building Acquisition and Construction Services - Original and Additional					
4600 Existing Building Improvement Services	367,326.71				
Total Facilities Acquisition, Construction and Improvement Services	\$881,932.77				
5000 <u>Other Expenditures and Financing Uses</u>					
5100 Debt Service / Other Expenditures and Financing Uses	10,786,082.30				
5200 Interfund Transfers - Out	1,300,000.00				
Total Other Expenditures and Financing Uses	\$12,086,082.30				
TOTAL ACTUAL EXPENDITURES & OTHER FINANCING USES	\$104,480,902.90				

LEA : 124157203 Phoenixville Area SD

Printed 12/4/2023 9:37:31 AM

	<u>Capital Reserve (690.1850)(31)</u>	<u>Capital Reserve (1431)(32)</u>	<u>Other Capital Projects Fund(39)</u>	<u>Debt Service(40)</u>	<u>Permanent(90)</u>
1000 <u>Instruction</u>					
1100 Regular Programs - Elementary / Secondary					
1200 Special Programs - Elementary / Secondary					
1300 Vocational Education					
1400 Other Instructional Programs - Elementary / Secondary					
Total Instruction					
2000 <u>Support Services</u>					
2100 Support Services - Students					
2200 Support Services - Instructional Staff					
2300 Support Services - Administration			75,500.00		
2400 Support Services - Pupil Health					
2500 Support Services - Business					
2600 Operation and Maintenance of Plant Services					
2700 Student Transportation Services					
2800 Support Services - Central			857,482.35		
2900 Other Support Services					
Total Support Services			\$932,982.35		
3000 <u>Operation of Non-Instructional Services</u>					
3200 Student Activities					
3300 Community Services					
Total Operation of Non-Instructional Services					
4000 <u>Facilities Acquisition, Construction and Improvement Services</u>					
4200 Existing Site Improvement Services		618,906.39			
4500 Building Acquisition and Construction Services - Original and Additional			1,869,583.60		
4600 Existing Building Improvement Services					
Total Facilities Acquisition, Construction and Improvement Services		\$618,906.39	\$1,869,583.60		
5000 <u>Other Expenditures and Financing Uses</u>					
5100 Debt Service / Other Expenditures and Financing Uses					
5200 Interfund Transfers - Out					
Total Other Expenditures and Financing Uses					
TOTAL ACTUAL EXPENDITURES & OTHER FINANCING USES		\$618,906.39	\$2,802,565.95		

LEA : 124157203 Phoenixville Area SD

Printed 12/4/2023 9:37:31 AM

	<u>Total</u>
1000 <u>Instruction</u>	
1100 Regular Programs - Elementary / Secondary	40,485,372.54
1200 Special Programs - Elementary / Secondary	14,177,520.99
1300 Vocational Education	855,104.00
1400 Other Instructional Programs - Elementary / Secondary	1,097,180.12
Total Instruction	\$56,615,177.65
2000 <u>Support Services</u>	
2100 Support Services - Students	5,922,339.20
2200 Support Services - Instructional Staff	2,811,594.46
2300 Support Services - Administration	5,790,285.66
2400 Support Services - Pupil Health	1,670,668.40
2500 Support Services - Business	1,178,437.38
2600 Operation and Maintenance of Plant Services	7,361,816.89
2700 Student Transportation Services	4,429,064.45
2800 Support Services - Central	3,704,479.30
2900 Other Support Services	81,750.89
Total Support Services	\$32,950,436.63
3000 <u>Operation of Non-Instructional Services</u>	
3200 Student Activities	1,982,324.72
3300 Community Services	897,931.18
Total Operation of Non-Instructional Services	\$2,880,255.90
4000 <u>Facilities Acquisition, Construction and Improvement Services</u>	
4200 Existing Site Improvement Services	1,133,512.45
4500 Building Acquisition and Construction Services - Original and Additional	1,869,583.60
4600 Existing Building Improvement Services	367,326.71
Total Facilities Acquisition, Construction and Improvement Services	\$3,370,422.76
5000 <u>Other Expenditures and Financing Uses</u>	
5100 Debt Service / Other Expenditures and Financing Uses	10,786,082.30
5200 Interfund Transfers - Out	1,300,000.00
Total Other Expenditures and Financing Uses	\$12,086,082.30
TOTAL ACTUAL EXPENDITURES & OTHER FINANCING USES	\$107,902,375.24

LEA : 124157203 Phoenixville Area SD

Printed 12/4/2023 9:37:41 AM

PSERS Salary Data (Salary Data should relate to the General Fund only)

Amount	Description	Amount
	Total Salary Base for salaries subject to PSERS withholding	39,557,774.69
	Total Federally Funded salaries subject to PSERS withholding	974,525.00

Title I Expenditure Data

Amount	Description	Amount
	Expenditures Funded with Current Title I Funds	533,096.33
	Expenditures Funded with Carry over Title I Funds	
Total	Title I Expenditure Data	\$533,096.33

Title IV Revenue Data

Amount	Description	Amount
	Revenue from Title IV-A-1: Student Support and Academic Enrichment Grants	35,179.00
	Revenue from Title IV-B: 21st Century Community Learning Centers	

Title V Revenue Data

Amount	Description	Amount
	Revenue from Title V-B-2: Rural and Low-Income School Programs	
	Revenue from Title V-B-1: Small Rural School Achievement (Directly from the Federal Govt)	

1 .	<u>Current Special Education Expenditures within Function 1000</u> See list of exclusions in the note below.	14,177,520.99
2 .	<u>Current Special Education Expenditures within Function 2000</u> See list of exclusions in the note below.	1,139,410.78
2A.	<u>Current Special Education Expenditures within Sub-Function 2100</u> This data should also be included in line 2 above. See list of exclusions in the note below.	724,953.72
2B.	<u>Current Special Education Expenditures within Sub-Function 2200</u> This data should also be included in line 2 above. See list of exclusions in the note below.	4,022.33
2C.	<u>Current Special Education Expenditures within Sub-Function 2700</u> This data should also be included in line 2 above. See list of exclusions in the note below.	26,986.50
3.	<u>Current Special Education Expenditures within Sub-Function 3100</u> See list of exclusions in the note below.	
4.	<u>Current Special Education Expenditures within Sub-Function 3200</u> See list of exclusions in the note below.	

Note: The Current Special Education Expenditure amounts for each line should be calculated as follows:

- * Include the total expenditures for special education costs from all governmental funds and the food service fund 51 for the function/sub-function requested
- * Exclude data from sub-functions: 1243,1450,1500,1600,1807,2280,2450,2750,2990
- * Exclude data from objects: 322,511,512,516,561,562,564,566,592,593,594,595,596,597,700,830,899

Benefits for Staff Relative to Collective Bargaining Agreements

	OBJECT	COVERED	NOT COVERED	TOTAL
10 General Fund				
	211 Medical Insurance			
	212 Dental Insurance			
	215 Eye Care Insurance			
	216 Prescription Insurance			
	271 Self-Insurance Medical Benefits	6,576,847.00	708,712.00	7,285,559.00
	272 Self-Insurance Dental Benefits	393,326.00	41,441.00	434,767.00
	275 Self-Insurance Eye Care Benefits	3,646.00	245.00	3,891.00
	276 Self-Insurance Prescription Benefits			
	FUND TOTAL	\$6,973,819.00	\$750,398.00	\$7,724,217.00
50 Enterprise Fund	No Self Insurance data to report			
	211 Medical Insurance			
	212 Dental Insurance			
	215 Eye Care Insurance			
	216 Prescription Insurance			
	271 Self-Insurance Medical Benefits			
	272 Self-Insurance Dental Benefits			
	275 Self-Insurance Eye Care Benefits			
	276 Self-Insurance Prescription Benefits			
	FUND TOTAL			
60 Internal Service Fund	No Self Insurance data to report			
	211 Medical Insurance			
	212 Dental Insurance			
	215 Eye Care Insurance			
	216 Prescription Insurance			
	271 Self-Insurance Medical Benefits			
	272 Self-Insurance Dental Benefits			
	275 Self-Insurance Eye Care Benefits			
	276 Self-Insurance Prescription Benefits			
	FUND TOTAL			
Total of All Funds		\$6,973,819.00	\$750,398.00	\$7,724,217.00

LEA : 124157203 Phoenixville Area SD

Printed 12/4/2023 9:37:45 AM

Function	Special Education (Prior Year)	Nonspecial Education (Prior Year)	Total (Prior Year)	Special Education (Current Year)	Nonspecial Education (Current Year)	Total (Current Year)
2120 Guidance Services	886,453.15	886,453.15	1,772,906.30	953,669.48	953,669.48	1,907,338.96
2140 Psychological Services	480,242.14	480,242.15	960,484.29	517,937.10	517,937.11	1,035,874.21
2150 Speech Pathology and Audiology Services	555,703.88		555,703.88	771,417.36		771,417.36
2160 Social Work Services	21,345.19		21,345.19	10,634.89		10,634.89
2260 Instruction and Curriculum Development Services	797,520.54	797,520.54	1,595,041.08	732,661.42	732,661.43	1,465,322.85
2350 Legal and Accounting Services	11,424.81	356,824.37	368,249.18	38,350.35	339,272.06	377,622.41
2420 Medical Services	235,508.51	303,840.14	539,348.65	461,279.82	416,954.69	878,234.51
2440 Nursing Services	213,477.44	635,383.76	848,861.20	175,476.09	616,957.80	792,433.89
2700 Student Transportation Services	514,876.70	2,403,853.91	2,918,730.61	497,333.62	2,331,124.12	2,828,457.74
Total	\$3,716,552.36	\$5,864,118.02	\$9,580,670.38	\$4,158,760.13	\$5,908,576.69	\$10,067,336.82

LEA : 124157203 Phoenixville Area SD

Printed 12/4/2023 9:37:48 AM

(PRINCIPAL AMOUNTS ONLY)

GOVERNMENTAL FUNDS/ ACTIVITIES

	Short-Term Borrowing	General Obligation Bonds/Notes	Authority Building Obligations	Leases, Other Right to Use Arrangements	Extended Term Financing Agreements	Other Long Term Debt/Liabilities	OPEB, Comp Abs, Net Pension Liab	Total
1. Debt at Beginning of Fiscal Year		121,332,000.00		255,205.17			115,423,548.42	237,010,753.59
2. Additional Debt Incurred During Year		35,000,000.00		896,466.56			14,182,938.57	50,079,405.13
3. Retirements and Repayments		7,416,000.00		233,831.02			1,873,285.00	9,523,116.02
4. Debt at End of Fiscal Year		148,916,000.00		917,840.71			127,733,201.99	277,567,042.70
5. Accreted Interest at End Of Fiscal Year								
6. Total Debt and Accreted Interest		148,916,000.00		917,840.71			127,733,201.99	277,567,042.70
7. Current Portion P&I - Due within 1 year		8,002,000.00		266,464.49				8,268,464.49
8. Interest Paid during current fiscal year		3,097,157.00		33,605.82				3,130,762.82

(PRINCIPAL AMOUNTS ONLY)

PROPRIETARY FUNDS

- 1. Debt at Beginning of Fiscal Year
- 2. Additional Debt Incurred During Year
- 3. Retirements and Repayments
- 4. Debt at End of Fiscal Year
- 5. Accreted Interest at End Of Fiscal Year
- 6. Total Debt and Accreted Interest
- 7. Current Portion P&I - Due within 1 year
- 8. Interest Paid during current fiscal year

LEA : 124157203 Phoenixville Area SD

Total Principal and Interest Payments Made by Your School - All Funds

Function	Fund		Principal (910)	Principal (920)	Interest (830)	Total (Principal +Interest)	Misc Other Uses (990)
5110	10	General Fund	7,416,000.00		3,097,156.90	10,513,156.90	
5110	20	Special Revenue Funds					
5110	30	Capital Projects Funds					
5110	40	Debt Service Fund					
5110	90	Permanent Fund					
5120	10	General Fund					
5120	20	Special Revenue Funds					
5120	30	Capital Projects Funds					
5120	40	Debt Service Fund					
5140	10	General Fund	233,831.02		33,605.82	267,436.84	
5140	20	Special Revenue Funds					
5140	30	Capital Projects Funds					
5140	40	Debt Service Fund					
5140	90	Permanent Fund					
Total Debt Payments - Governmental Funds			\$7,649,831.02		\$3,130,762.72	\$10,780,593.74	

Function	Fund		Principal (910)	Principal (920)	Interest (830)	Total (Principal +Interest)
5110	50	Enterprise Fund				
5110	60	Internal Service Fund				
5120	50	Enterprise Fund				
5120	60	Internal Service Fund				
5140	50	Enterprise Fund				
5140	60	Internal Service Fund				
Total Debt Payments - Proprietary Funds						

LEA : 124157203 Phoenixville Area SD

Debt Details
Governmental Funds/ Activities

Debt Category	Debt Issue Date (MM/YYYY)	Principal Amounts Only				Current Portion Due Within One Year (Principal and Interest)	Interest Paid During Fiscal Year
		Debt at Beginning of Fiscal Year	Additions	Reductions / Repayments	Debt at End of Fiscal Year		
General Obligation Bonds/Notes – CIB	03/2023		35,000,000.00		35,000,000.00		
General Obligation Bonds/Notes – CIB	03/2021	9,415,000.00		10,000.00	9,405,000.00	10,000.00	188,550.00
General Obligation Bonds/Notes – CIB	06/2021	5,442,000.00		576,000.00	4,866,000.00	577,000.00	69,579.00
General Obligation Bonds/Notes – CIB	06/2020	13,960,000.00		2,600,000.00	11,360,000.00	1,910,000.00	451,100.00
General Obligation Bonds/Notes – CIB	06/2020	49,005,000.00		300,000.00	48,705,000.00	2,895,000.00	1,021,665.00
General Obligation Bonds/Notes – CIB	02/2019	9,970,000.00		5,000.00	9,965,000.00	5,000.00	348,663.00
General Obligation Bonds/Notes – CIB	02/2018	9,975,000.00		5,000.00	9,970,000.00	5,000.00	306,425.00
General Obligation Bonds/Notes – CIB	02/2017	8,690,000.00		5,000.00	8,685,000.00	5,000.00	294,725.00
General Obligation Bonds/Notes – CIB	02/2017	3,230,000.00		1,055,000.00	2,175,000.00	1,075,000.00	56,800.00
General Obligation Bonds/Notes – CIB	07/2017	1,385,000.00		1,385,000.00			34,625.00
General Obligation Bonds/Notes – CIB	07/2017	8,120,000.00		775,000.00	7,345,000.00	805,000.00	289,225.00
General Obligation Bonds/Notes – CIB	11/2016	2,140,000.00		700,000.00	1,440,000.00	715,000.00	35,800.00
Leases and Other Right to Use Arrangements		255,205.17	896,466.56	233,831.02	917,840.71	266,464.49	33,605.82
Net Pension Liability		105,515,796.00	13,944,790.00		119,460,586.00		
Other Post-Employment Benefits (OPEB)		8,139,208.00	210,068.00	1,873,285.00	6,475,991.00		
Compensated Absences		1,768,544.42	28,080.57		1,796,624.99		
Totals for Debt Entered:		\$237,010,753.59	\$50,079,405.13	\$9,523,116.02	\$277,567,042.70	\$8,268,464.49	\$3,130,762.82

LEA : 124157203 Phoenixville Area SD

Printed 12/4/2023 9:37:49 AM

General Fund (10)

Section 1: Tuition/Purchased Services as Reported within Expenditure Detail	Amount
Tuition Reported in General Fund Expenditures 1000-560	6,990,975.73
Purchased Services in General Fund Expenditures 1000-594 and 1000-597	
Section 1 Total	\$6,990,975.73

Section 2: Tuition Paid to Institution Types During Fiscal Year	Tuition Paid For Nonspecial Education	Tuition Paid For Special Education	Total
1 1306 Institutions			
2 Institutionalized Children's Programs			
3 Juveniles Incarcerated in Adult Facilities			
4 Residential Treatment Facilities			
5 Other Local Education Agencies	8,544.30	76,441.89	84,986.19
6 Brick and Mortar Charter Schools	2,983,090.63	1,760,201.13	4,743,291.76
7 Cyber Charter Schools			
8 Career and Technology Centers	855,104.00		855,104.00
9 Approved Private Schools	50,737.75	752,689.67	803,427.42
10 PA Chartered Schools for the Deaf and Blind			
11 Private Residential Rehabilitative Institutions		177,521.33	177,521.33
12 Juvenile Detention Centers			
13 Special Program Jointures			
14 Other Tuition Not Included Elsewhere In This Section	34,750.03	291,895.00	326,645.03
Section 2 Total	\$3,932,226.71	\$3,058,749.02	\$6,990,975.73

LEA : 124157203 Phoenixville Area SD

Printed 12/4/2023 9:37:52 AM

Food Service / Cafeteria Operations Fund (51)

3000 Operation of Non-Instructional Services		<u>Total</u>
100 <u>Personnel Services – Salaries</u>		
100 Personnel Services – Salaries		40,030.00
Total Personnel Services – Salaries		\$40,030.00
300 <u>Purchased Professional and Technical Services</u>		
330 Other Professional Services		632.50
Total Purchased Professional and Technical Services		\$632.50
500 <u>Other Purchased Services</u>		
570 Food Service Management		1,500,344.30
Total Other Purchased Services		\$1,500,344.30
600 <u>Supplies</u>		
610 General Supplies		19,181.23
630 Food		106,102.00
650 Supplies & Fees – Technology Related		470.00
Total Supplies		\$125,753.23
700 <u>Property</u>		
740 Depreciation		40,801.64
Total Property		\$40,801.64
800 <u>Other Objects</u>		
810 Dues and Fees		23,387.80
Total Other Objects		\$23,387.80
Total 3000 Operation of Non-Instructional Services		\$1,730,949.47

LEA : 124157203 Phoenixville Area SD

Printed 12/4/2023 9:37:52 AM

Food Service / Cafeteria Operations Fund (51)

3100 Food Services	<u>Elementary</u>	<u>Secondary</u>	<u>Federal</u>	<u>Total</u>
100 <u>Personnel Services – Salaries</u>				
100 Personnel Services – Salaries				40,030.00
Total Personnel Services – Salaries				\$40,030.00
300 <u>Purchased Professional and Technical Services</u>				
330 Other Professional Services				632.50
Total Purchased Professional and Technical Services				\$632.50
500 <u>Other Purchased Services</u>				
570 Food Service Management				1,500,344.30
Total Other Purchased Services				\$1,500,344.30
600 <u>Supplies</u>				
610 General Supplies				19,181.23
630 Food				106,102.00
650 Supplies & Fees – Technology Related				470.00
Total Supplies				\$125,753.23
700 <u>Property</u>				
740 Depreciation				40,801.64
Total Property				\$40,801.64
800 <u>Other Objects</u>				
810 Dues and Fees				23,387.80
Total Other Objects				\$23,387.80
Total 3100 Food Services				\$1,730,949.47

	<u>Food Service(51)</u>	<u>Child Care Operations(52)</u>	<u>Other Enterprise(58)</u>	<u>Internal Service(60)</u>	<u>Total</u>
3000 <u>Operation of Non-Instructional Services</u>					
3100 Food Services	1,730,949.47				1,730,949.47
Total Operation of Non-Instructional Services	\$1,730,949.47				\$1,730,949.47
TOTAL ACTUAL EXPENDITURES & OTHER FINANCING USES	\$1,730,949.47				\$1,730,949.47

LEA : 124157203 Phoenixville Area SD

Printed 12/4/2023 9:38:00 AM

Fund	School	School Number	Local Personnel	Local Nonpersonnel	State Personnel	State Nonpersonnel	Federal Personnel	Federal Nonpersonnel	Total	Explanation
10										
	Barkley El Sch	1430	3,935,987.89	826,912.71	895,275.84	188,088.73	78,328.99	72,074.34	5,996,668.50	
	Manavon El Sch	8395	6,774,730.42	1,423,304.85	1,540,973.36	323,743.49	134,822.01	124,056.34	10,321,630.47	
	Phoenixville Area HS	1426	16,204,404.06	3,404,387.41	3,685,837.43	774,358.53	322,479.31	296,729.01	24,688,195.75	
	Phoenixville Area MS	1425	12,570,053.48	2,640,845.76	2,859,171.71	600,684.12	250,153.12	230,178.14	19,151,086.33	
	Phoenixville Early Learning Ctr	8396	7,819,198.66	1,642,737.45	1,778,547.05	373,655.41	155,607.68	143,182.25	11,912,928.50	
	Schuykill El Sch	4841	6,122,119.21	1,286,197.60	1,392,531.07	292,557.21	121,834.58	112,105.97	9,327,345.64	
Total			53,426,493.72	11,224,385.78	12,152,336.46	2,553,087.49	1,063,225.69	978,326.05	81,397,855.19	